

Architectural Designs ...selling quality house plans for over 30 years.

Plan W15000NC: Cozy Country Farmhouse



House plans are Copyright © 2009 by our architects and designers.

- This cozy country farmhouse has a fantastic wraparound porch that has a partially screened-in portion and a deck in the back that gives you multiple options to enjoy the outdoors.
- The foyer opens to a large living room with a fireplace. The dining room is set off by arched openings. The kitchen is nearby and has windows looking out across the deck and a pantry.
- A bedroom and powder room complete the main floor.
- Upstairs, three bedrooms including the master with large walk-in closet and laundry facilities complete this house plan.

Style: Country, Farmhouse

Total Living Area: 1816

Main Flr.: 940

2nd Flr.: 876

Front Porch: 175 sq. ft.

Deck: 355 sq. ft.

Total Square Feet: 2,346 sq. ft.

Bedrooms: 4

Full Bathrooms: 3

Width: 34'

Depth: 47'10"

Maximum Ridge Height: 29'6

Exterior Walls: 2x4

Ceiling Height:

Main Floor: 10'

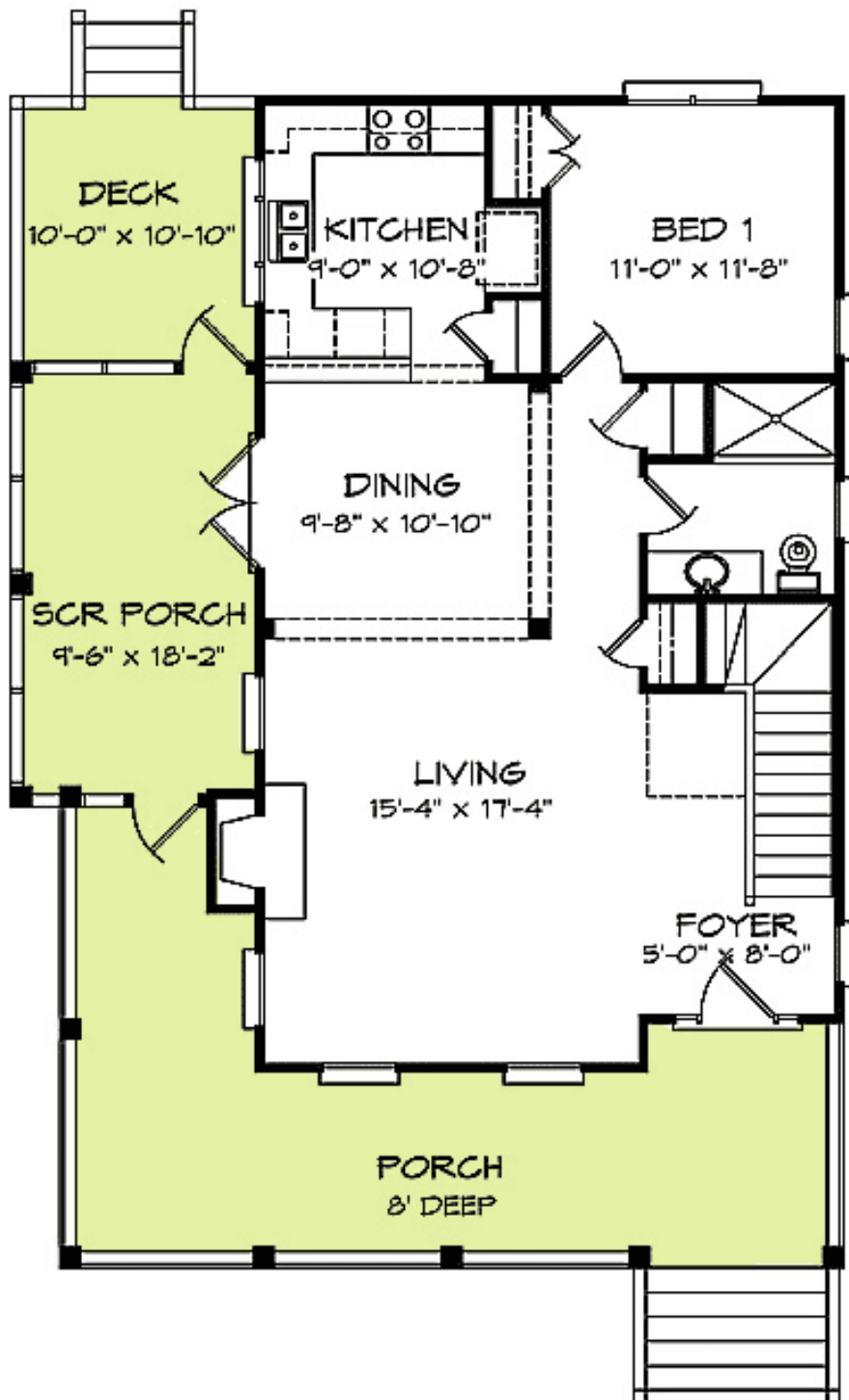
2nd Floor: 9'

Standard Foundations: Crawl

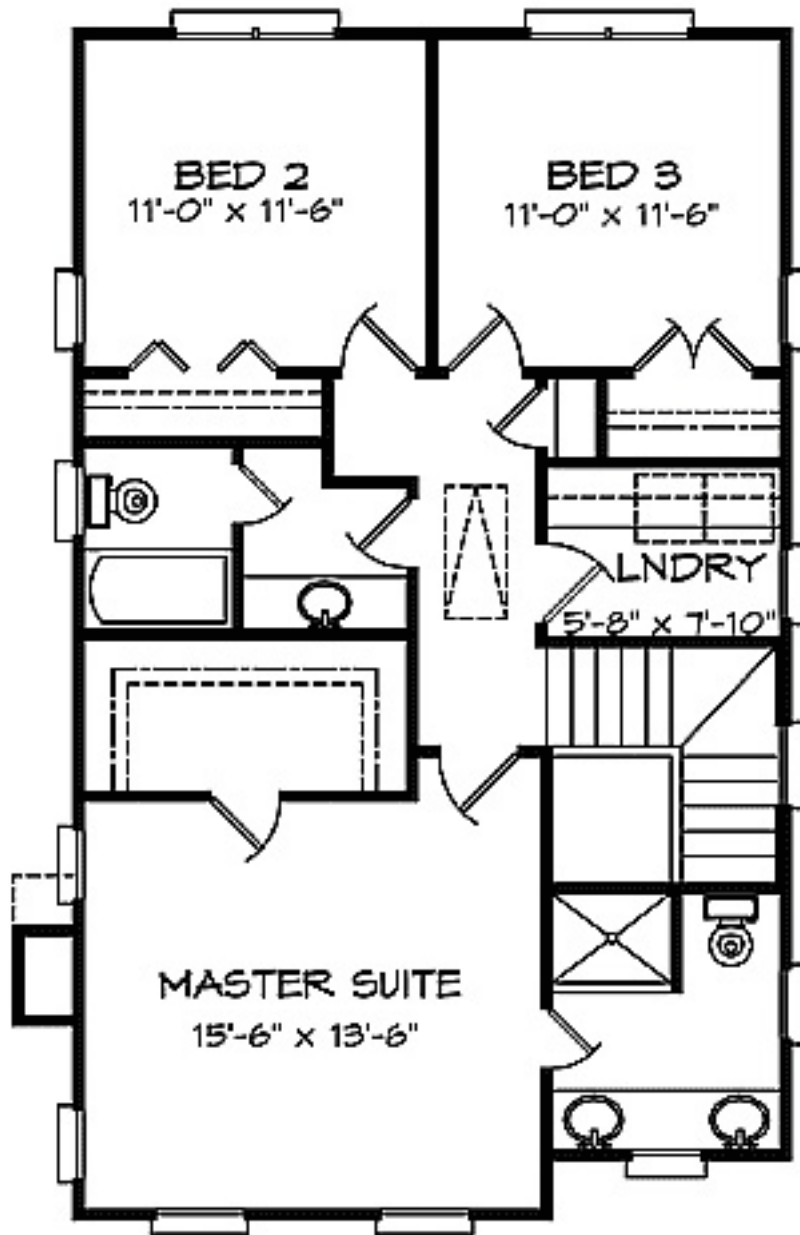
Special Features: CAD Available, PDF, Den-Office-Library-Study, Narrow Lot

Five Sets	Eight Sets	Reproducible	PDF File	CAD
\$725	\$850	\$1,200	\$1,195	\$1,600

Main Level



2nd Level



Sides/Rear

