

# Architectural Designs ...selling quality house plans for over 30 years.

Plan W2107DR: Four Seasons Sloping Lot Cottage



House plans are Copyright © 2009 by our architects and designers.

- A screened porch off the entry deck adds outdoor living space to this charming cottage home plan. The daylight basement makes the plan perfect for a sloping lot and provides the opportunity for later expansion.
- The main living area is comprised of a dining room, a family room with a charming corner fireplace and an L-shaped kitchen featuring a six-sided island for informal dining and food preparation.
- Also on the main floor, you find a bedroom with a walk-in closet, placed across the hall from a full bath with a laundry closet. A storage room is also found on this floor.
- Upstairs, a large bath with a garden tub and a separate shower can be accessed from either the hall or the larger of the two bedrooms on this floor. Ceilings on the second floor are sloped.
- Foundation: daylight basement standard. Slab and crawl space available for an additional amount.
- Related Plan: Building in reverse? See house plan 2120DR.

Style: Canadian, Cottage, Country, Metric, Vacation

Total Living Area: 1484

Main Flr.: 908

2nd Flr.: 576

Basement Unfinished: 908 sq. ft.

Entry: 44 sq. ft.

Screen Porch:

Total Square Feet: 2,436 sq. ft.

Bedrooms: 3

Full Bathrooms: 2

Width: 26'

Depth: 48'

Maximum Ridge Height: 25'6"

Exterior Walls: 2x6

Ceiling Height:

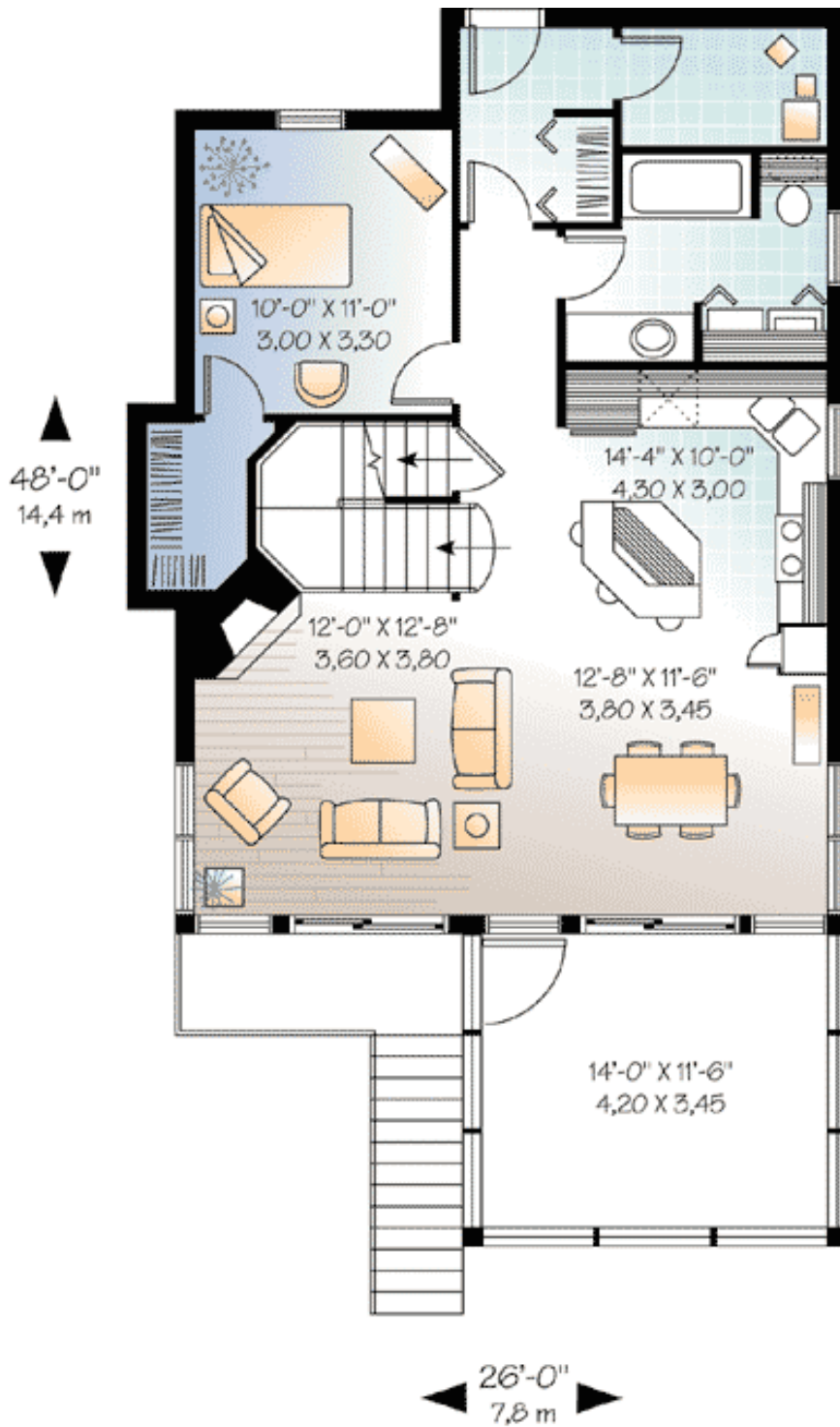
Standard Foundations: Walkout

Alternate Foundations: Slab (\$295), Basement (\$295), Crawl (\$295)

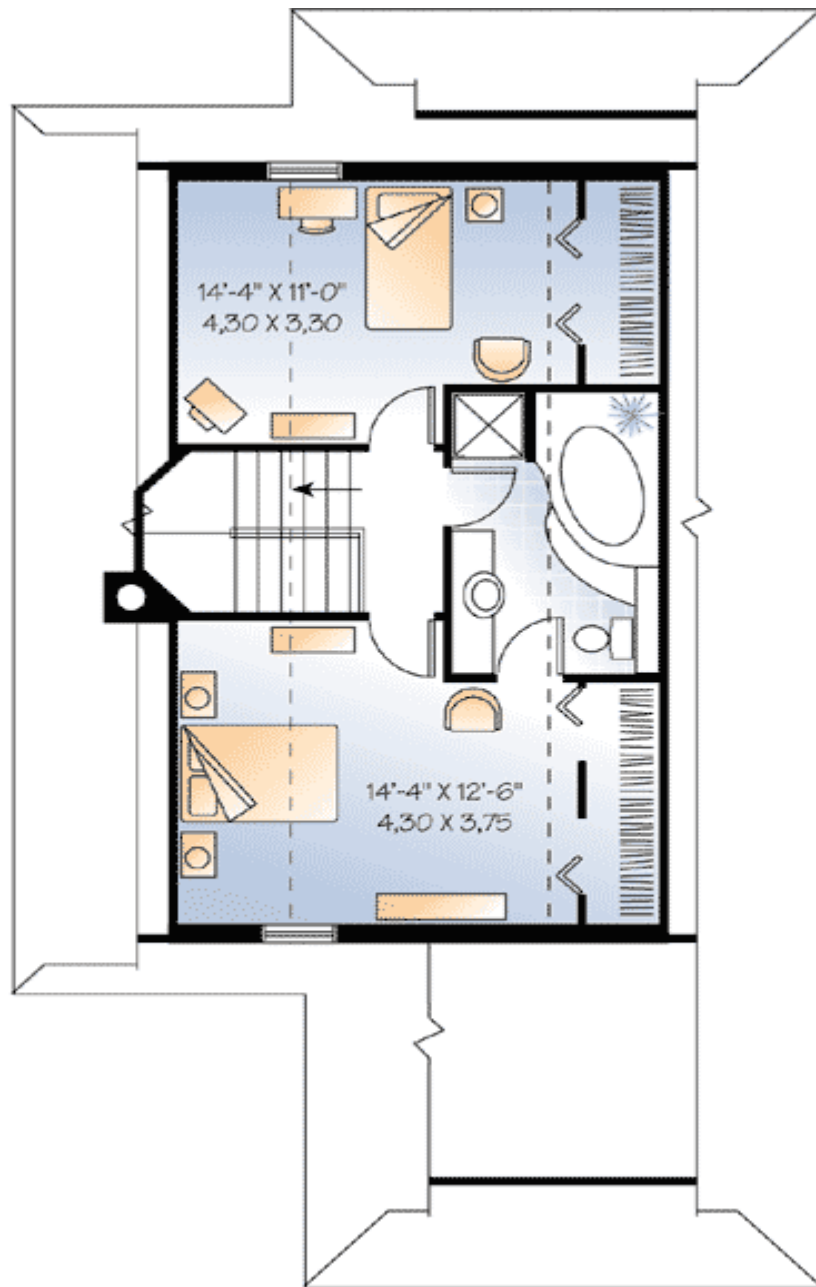
Special Features: Narrow Lot, CAD Available, PDF, Bonus Room, Sloping Lot

One Set	Five Sets	Eight Sets	Reproducible	PDF File	CAD
\$549	\$589	\$619	\$799	\$799	\$1,490

## Main Level



2nd Level



Elevation #2

# Front elevation

