

# Architectural Designs ...selling quality house plans for over 30 years.

Plan W15014NC



House plans are Copyright © 2009 by our architects and designers.

Style: Cottage, Country, Low Country, Southern

Total Living Area: 2719

Main Flr.: 1329

2nd Flr.: 1230

Lower Level: 160

Basement Unfinished: 566 sq. ft.

Porch, Combined: 586 sq. ft.

Balcony/Veranda: 117 sq. ft.

Covered Patio: 586 sq. ft.

Total Square Feet: 5,102 sq. ft.

Attached Garage: 2 Car, 528 sq. ft.

Bedrooms: 3

Full Bathrooms: 2

Half Bathrooms: 1

Width: 34'

Depth: 56'4"

Maximum Ridge Height: 38'4"

Exterior Walls: 2x4

Ceiling Height:

Main Floor: 8'

2nd Floor: 9'

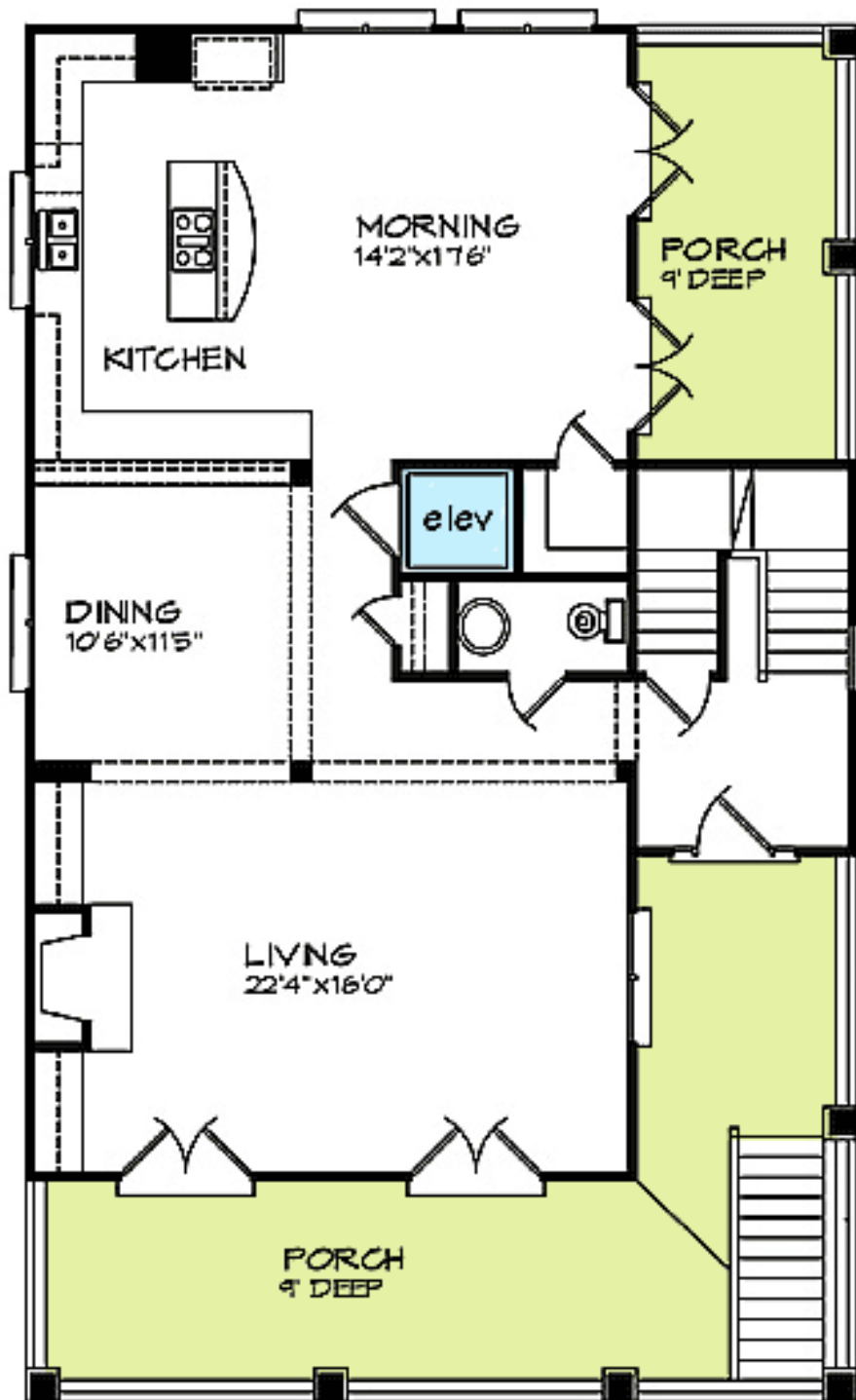
Other: 8'-10'6" Tray MBR

Standard Foundations: Piling, Raise Island, Slab

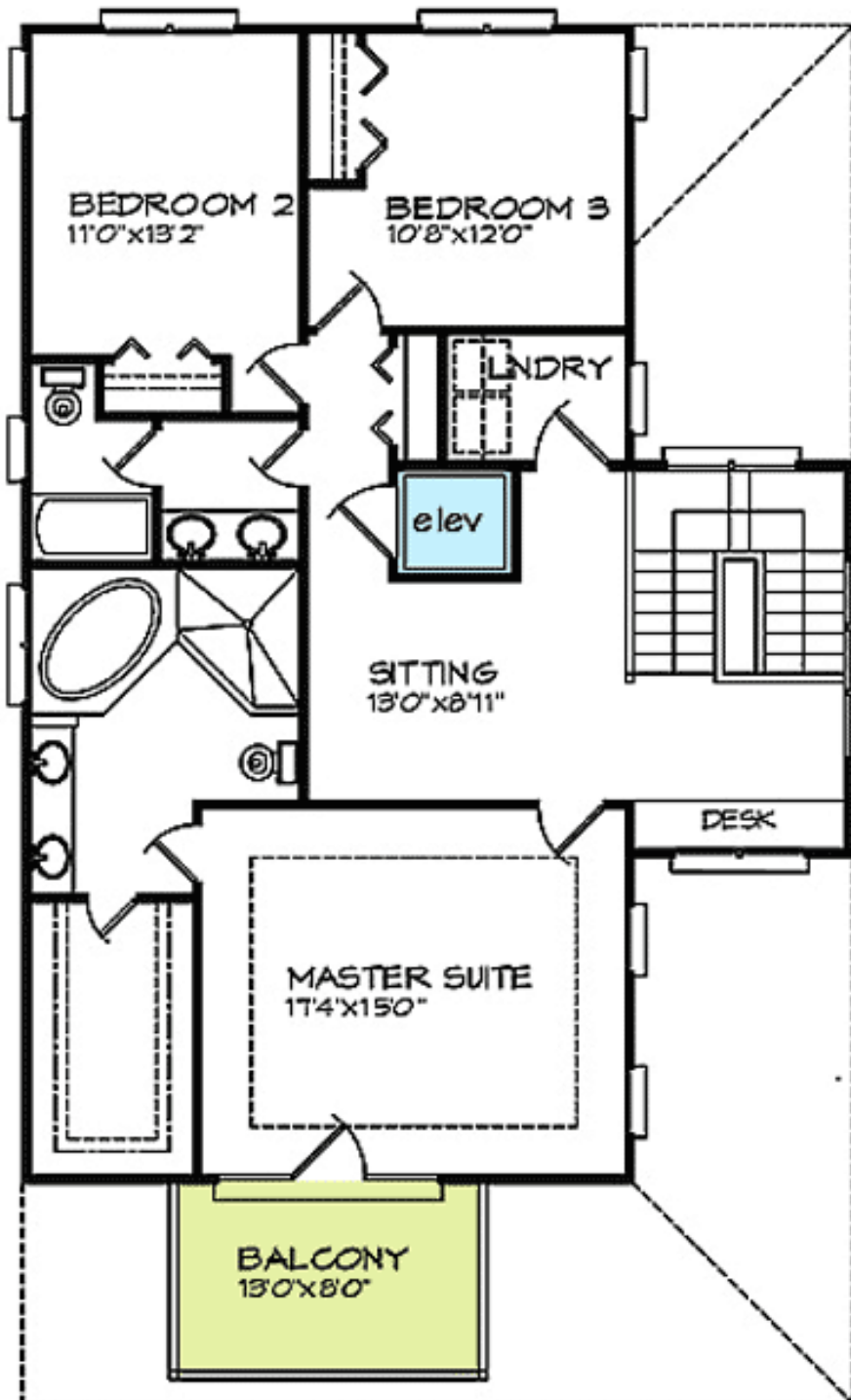
Special Features: PDF, CAD Available, Narrow Lot, Bonus Room, Elevator, MBR Sitting Area, Drive Under Garage

Five Sets	Eight Sets	Reproducible	PDF File	CAD
\$825	\$950	\$1,350	\$1,295	\$1,850

Main Level



## 2nd Level



## Lower Level

