

Plan W7087H: Open Plan with a Circular Dining Room



House plans are Copyright © 2009 by our architects and designers.

- Innovative architectural features and a functional, light-filled floor plan are the hallmarks of this attractive three bedroom single-story design. The facade is graced by a stone chimney and a circular glass bay; an inviting entranceway leads to a central gallery, brightened by an operable skylight.
- A combination living room and dining room is punctuated by a bold stone fireplace and a dramatic domed ceiling over the circular dining room.
- The informal area to the rear, with a spacious family room, semi-circular dinette and a modern efficient kitchen, generates a warm atmosphere for casual get-togethers and relaxation; sliding glass doors open onto a rear-yard terrace.
- Three bedrooms and two full baths are separated for privacy. The unique master bedroom, loaded with amenities, boasts a large walk-in closet and a tiled bath with a luxurious whirlpool tub.
- Foundation: optional basement.

Style: Contemporary, Ranch

Total Living Area: 1560

Main Flr.: 1560

Total Square Feet: 2,135 sq. ft.

Attached Garage: 2 Car, 575 sq. ft.

Bedrooms: 3

Full Bathrooms: 2

Width: 59'

Depth: 55'

Exterior Walls: 2x4

Ceiling Height:

Standard Foundations: Basement

Special Features: 1st Floor Master Suite

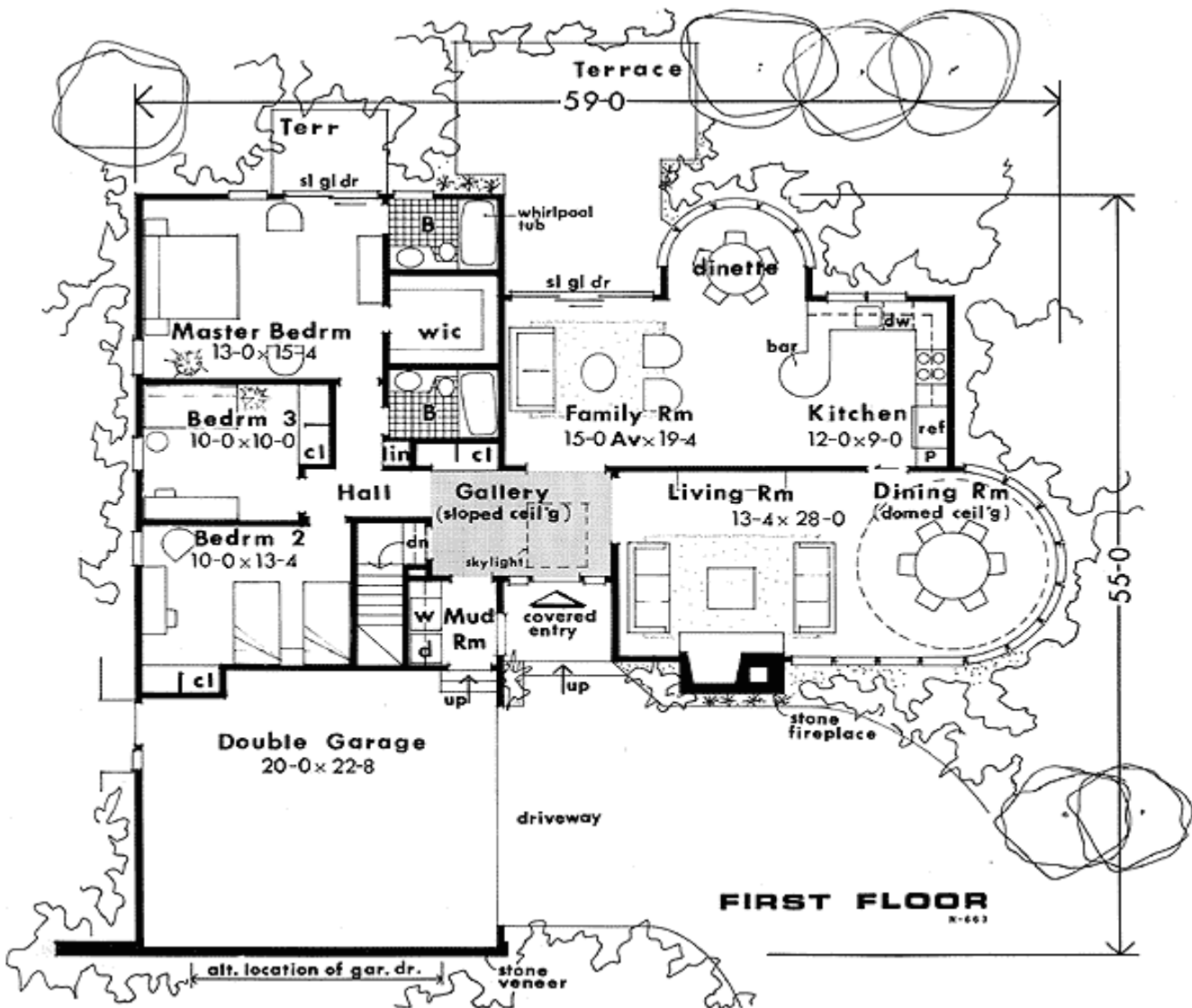
One Set
\$450

Five Sets
\$505

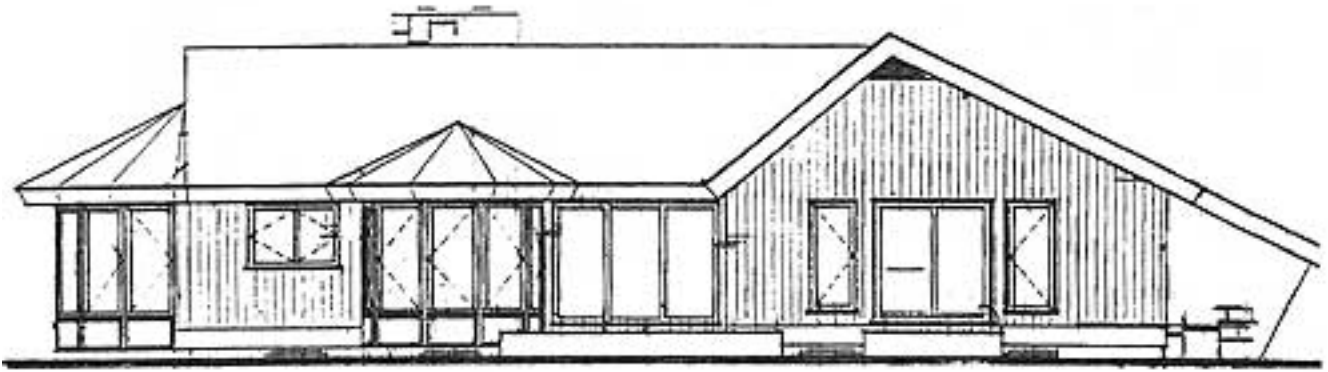
Eight Sets
\$550

Reproducible
\$670

Main Level



Rear View



Rear Elevation

Interior

