

# Architectural Designs ...selling quality house plans for over 30 years.

Plan W21181DR: Vacation Retreat



House plans are Copyright © 2009 by our architects and designers.

- Designed for a sloping lot, this vacation home plan has plenty of room to accommodate family and guests. A wall of windows across the rear brings in light and maximizes views.
- On the main level, the large kitchen with an island blends into the living/dining room and into the media room beyond. A private master suite with walk-in closet is also located on this level.
- Two bedrooms with a bath and balcony loft overlooking the living space below occupy the second floor.
- Guest quarters on the lower level are comprised of two more bedrooms, a large bath and recreation room plus laundry room.
- Related Plan: Save money with house plan 21179DR which features an unfinished lower level, saving you up-front costs and giving you the flexibility to outfit it as you see fit when you see fit.

Style: Canadian, Metric, Mountain, Vacation

Total Living Area: 3506

Main Flr.: 1604

2nd Flr.: 655

Lower Level: 1247

Bonus: 257 sq. ft.

Front Porch: 169 sq. ft.

Deck: 327 sq. ft.

Total Square Feet: 4,772 sq. ft.

Bedrooms: 5

Full Bathrooms: 3

Half Bathrooms: 1

Width: 59'

Depth: 49'8"

Maximum Ridge Height: 34'3"

Exterior Walls: 2x6

Ceiling Height:

Main Floor: 8'

2nd Floor: 8'

Other: 17'4" living room; 14' media room; 12'9"" screened porch; storage area over garage 6'8"" with 3'8"" kneewalls

Standard Foundations: Walkout

Alternate Foundations: Slab (\$295), Basement (\$295), Crawl (\$295)

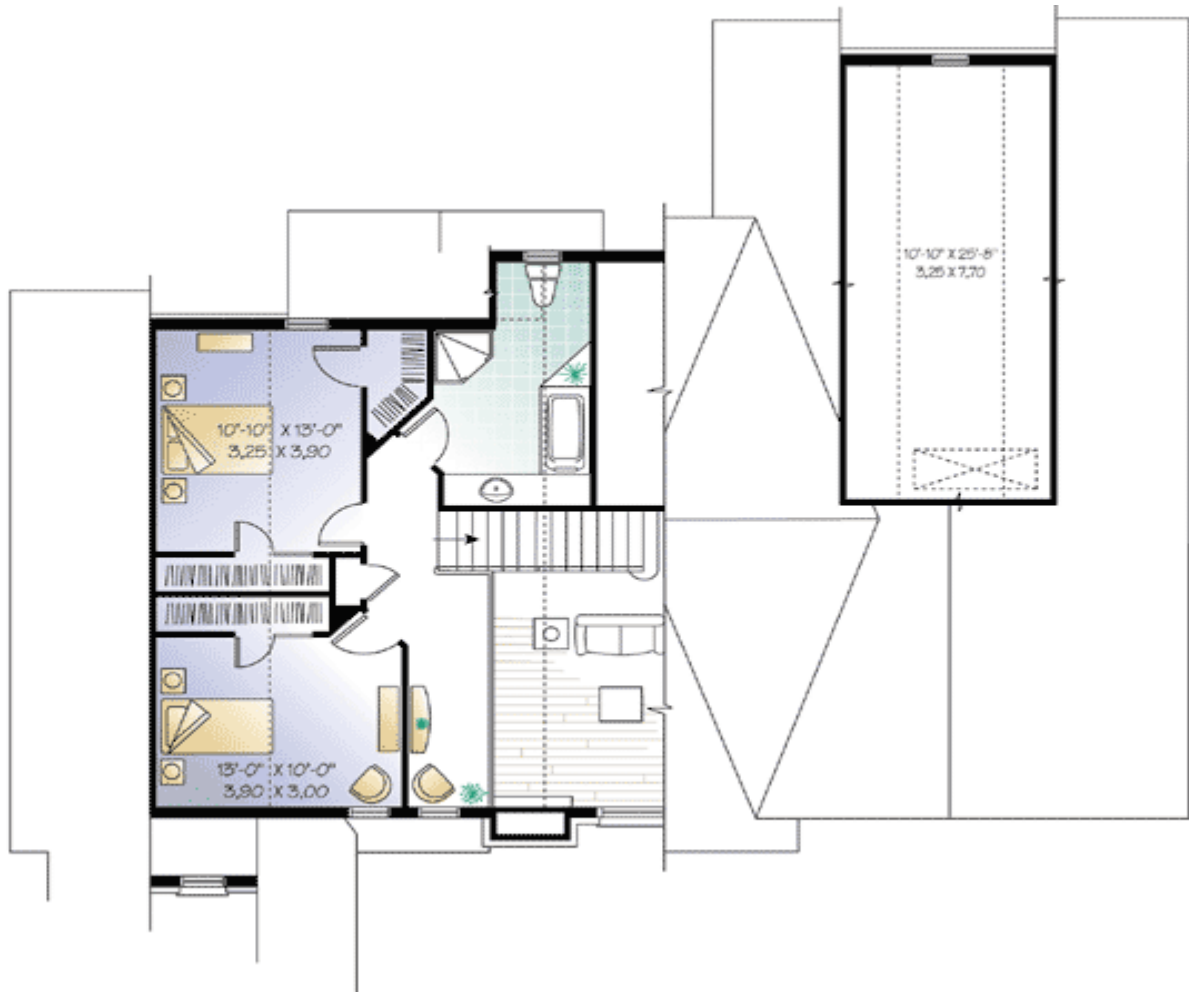
Special Features: Bonus Room, PDF, Sloping Lot, 1st Floor Master Suite, CAD Available, Loft, Media-Game-Home Theater

One Set	Five Sets	Eight Sets	Reproducible	PDF File	CAD
\$899	\$939	\$969	\$1,149	\$1,149	\$1,875

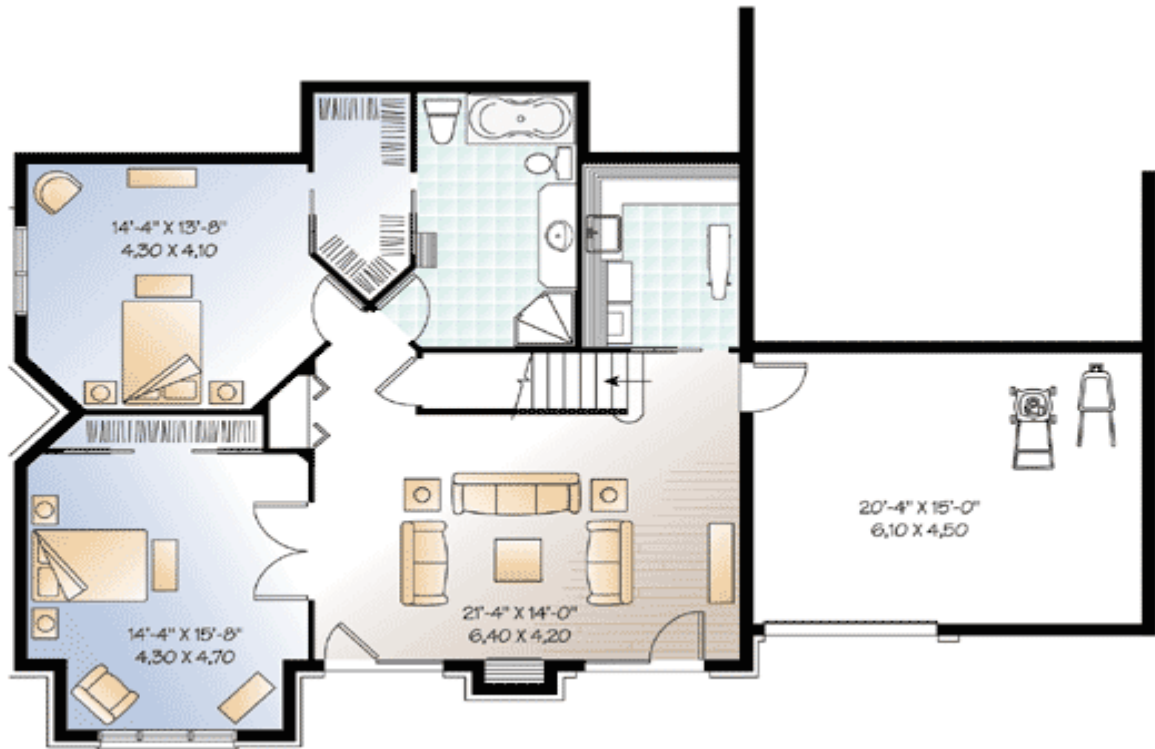
## Main Level



## 2nd Level



## Lower Level



Photo



Elevation #2



Rear View



## Interior

