

Architectural Designs ...selling quality house plans for over 30 years.

Plan W18233BE: Getaway with Wraparound Views



House plans are Copyright © 2009 by our architects and designers.

- Enjoy views on three sides with the wraparound covered porch on this getaway house plan. Square columns add to the allure of this design as does a shed dormer that brings light into the home.
- The light-filled kitchen is separated by the living and dining rooms by an eat-at counter. A fireplace in the living room is a nice touch.
- The master bedroom features a walk-in closet and has sliding door access to the rear porch.
- On the main level you'll find a 2-car garage and an unfinished basement. If you need this space finished, see house plan 18234BE.

Style: Cottage, Vacation

Total Living Area: 1236

Main Flr.: 1236

Basement Unfinished: 1,015 sq. ft.

Porch, Combined: 849 sq. ft.

Total Square Feet: 3,768 sq. ft.

Attached Garage: 2 Car, 668 sq. ft.

Bedrooms: 1

Full Bathrooms: 1

Half Bathrooms: 1

Width: 49'9"

Depth: 50'

Maximum Ridge Height: 31'3"

Exterior Walls: 2x6

Ceiling Height:

Main Floor: 9'

Other: 17' Vaulted Living, Dining & Kitchen

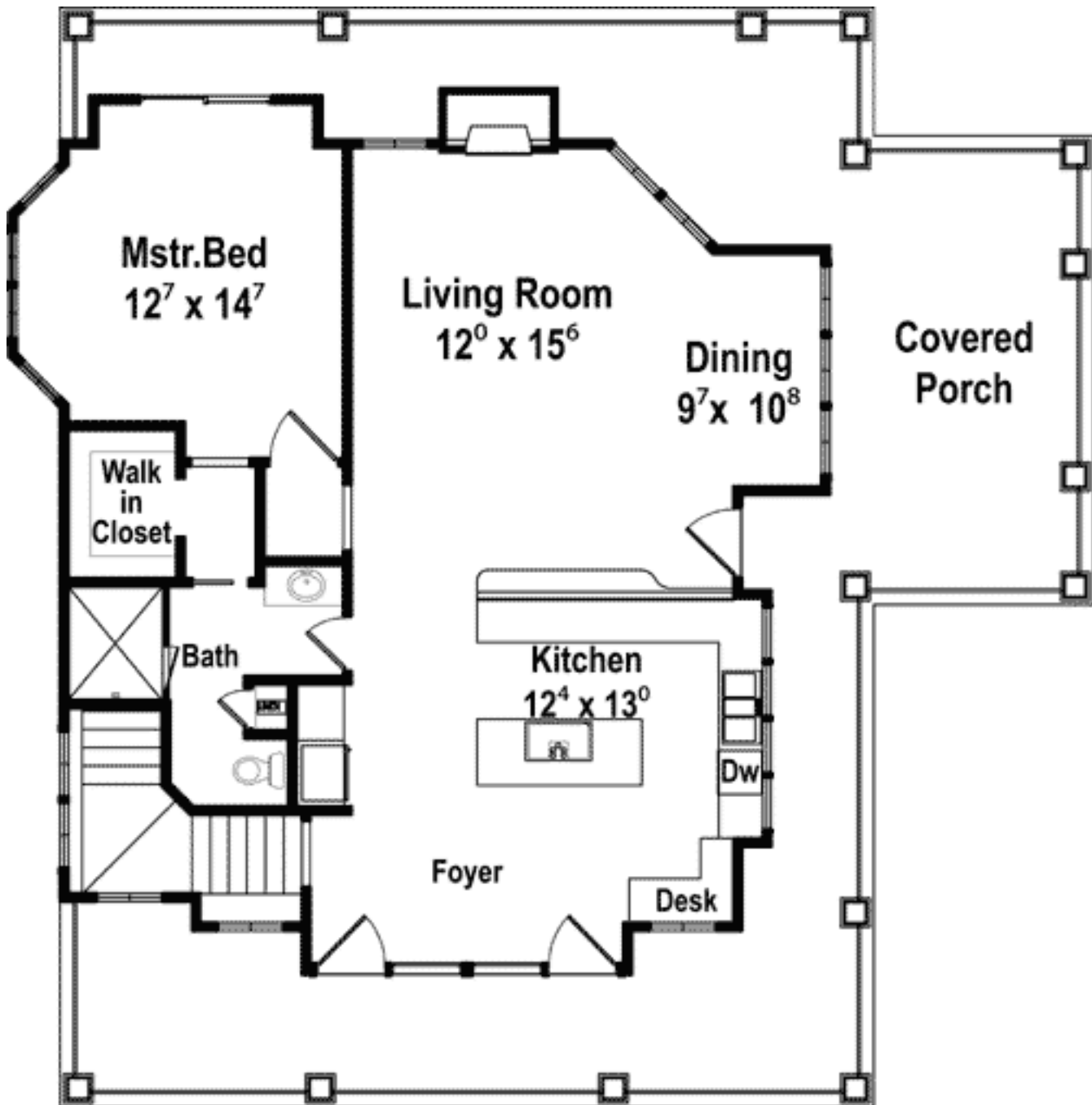
Standard Foundations: Basement

Alternate Foundations: Slab (\$150), Crawl (\$150)

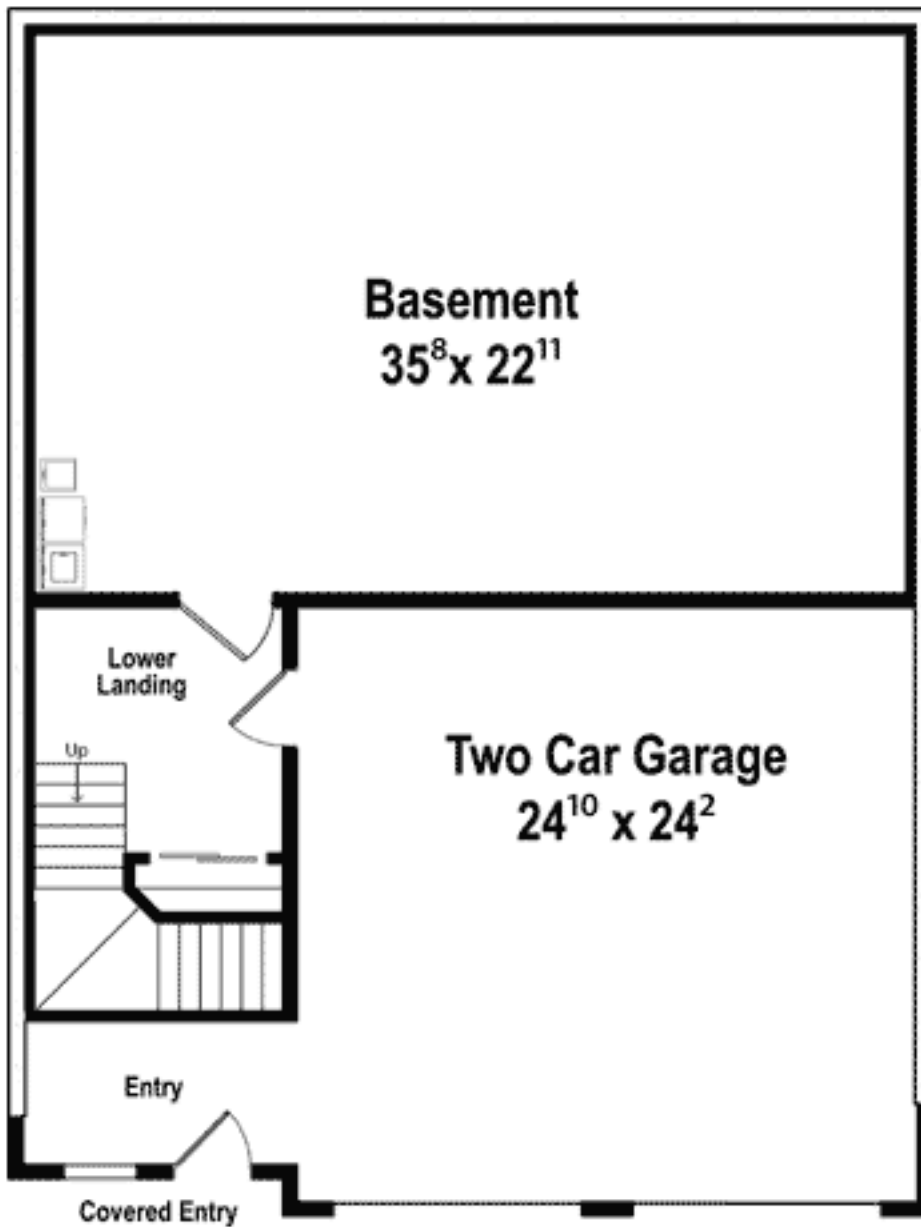
Special Features: 1st Floor Master Suite, Narrow Lot, Sloping Lot, Wrap Around Porch, CAD Available, PDF

One Set	Five Sets	Eight Sets	Reproducible	PDF File	CAD
\$475	\$575	\$675	\$775	\$775	\$1,295

Main Level



Lower Level



Rear View

