

# Architectural Designs ...selling quality house plans for over 30 years.

Plan W13015FL: Unfettered Coastal Views



House plans are Copyright © 2009 by our architects and designers.

- Statuesque and regal, this plan offers spacious living with flexible options for narrow lot sizes.
- In addition to a sweeping first floor rec room flanked by twin guest bedrooms, this house plan features double master suites on the second floor, as well as two additional bedrooms for a grand total of six complete bedrooms.
- The third floor living space is stunning, with an expansive great room and fireplace overlooking a covered deck for unfettered coastal views.
- Multiple storage spaces offer practical support for this beautiful home.

Style: Beach, Florida, Shingle Style, Vacation

Total Living Area: 3068

Main Flr.: 838

2nd Flr.: 1113

3rd Flr.: 1059

Porch, Combined: 200 sq. ft.

Deck: 716 sq. ft.

Tower:

Total Square Feet: 4,384 sq. ft.

Attached Garage: 2 Car, 400 sq. ft.

Bedrooms: 6

Full Bathrooms: 4

Half Bathrooms: 1

Width: 24'10"

Depth: 64'

Maximum Ridge Height: 35'

Exterior Walls: 2x4

Ceiling Height:

Main Floor: 8'

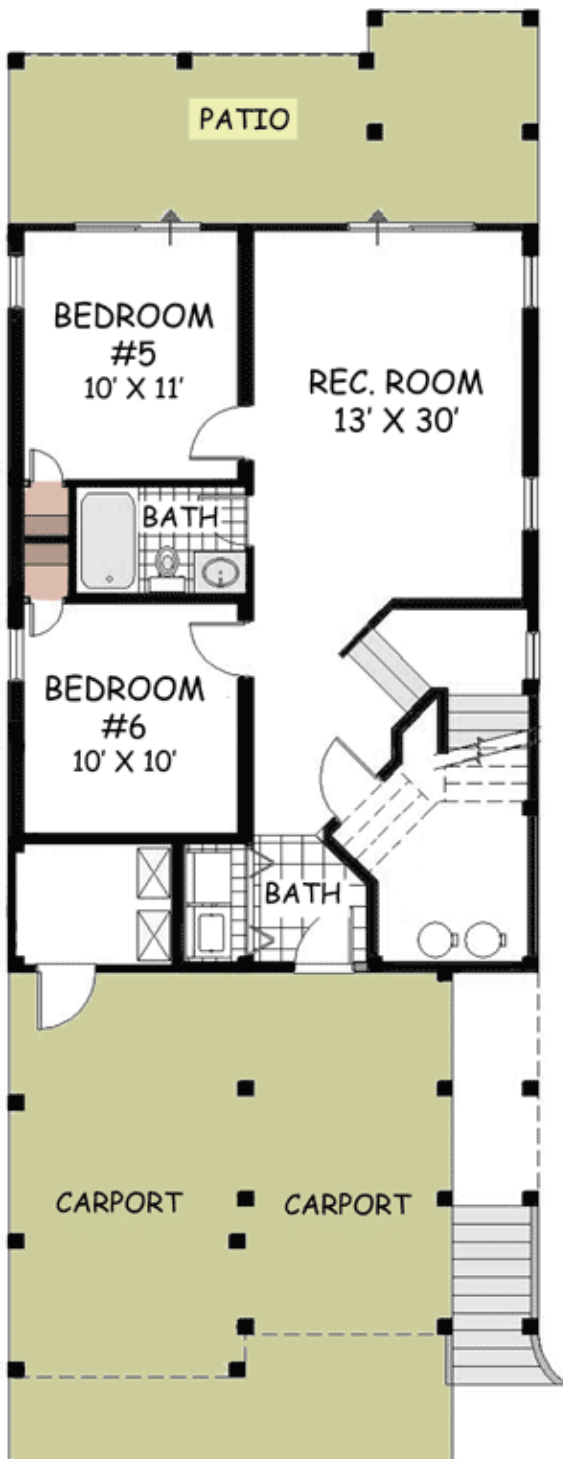
Other: 12'6" Vaulted Great Room & Dining; 10' Vaulted Kitchen

Standard Foundations: Piling

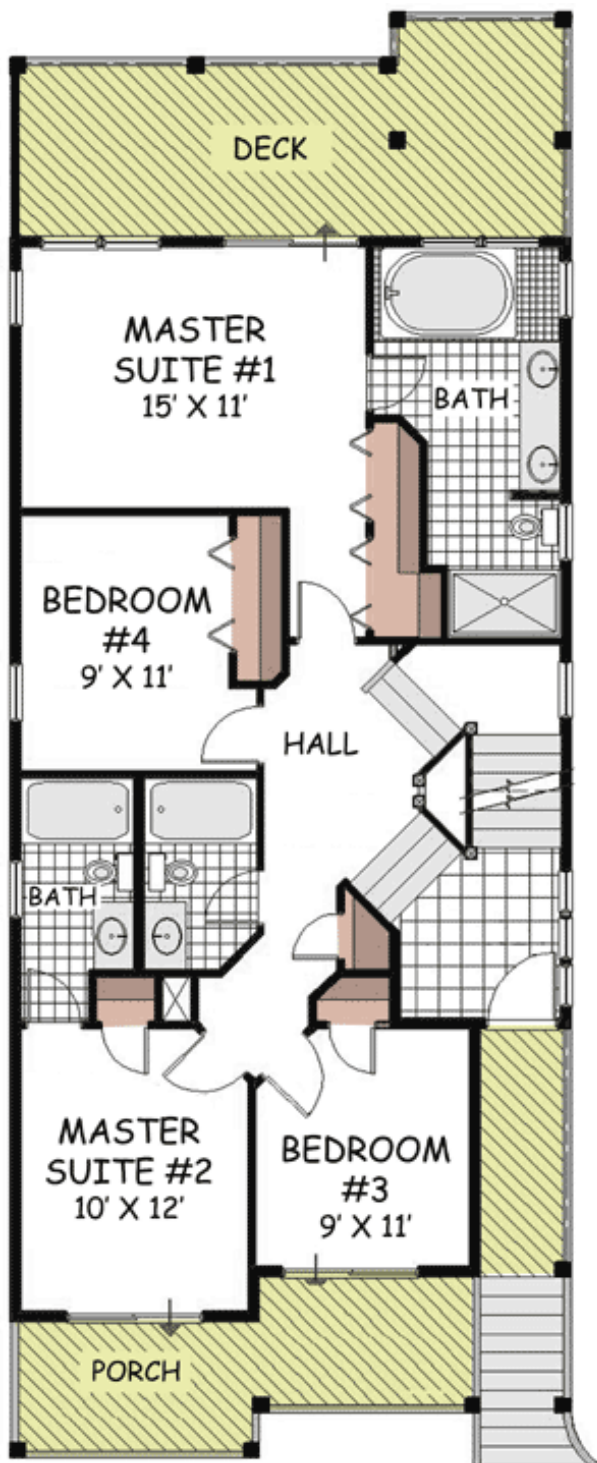
Special Features: PDF, Photo Gallery, Narrow Lot, CAD Available

Reproducible	PDF File	CAD
\$2,326	\$2,326	\$3,326

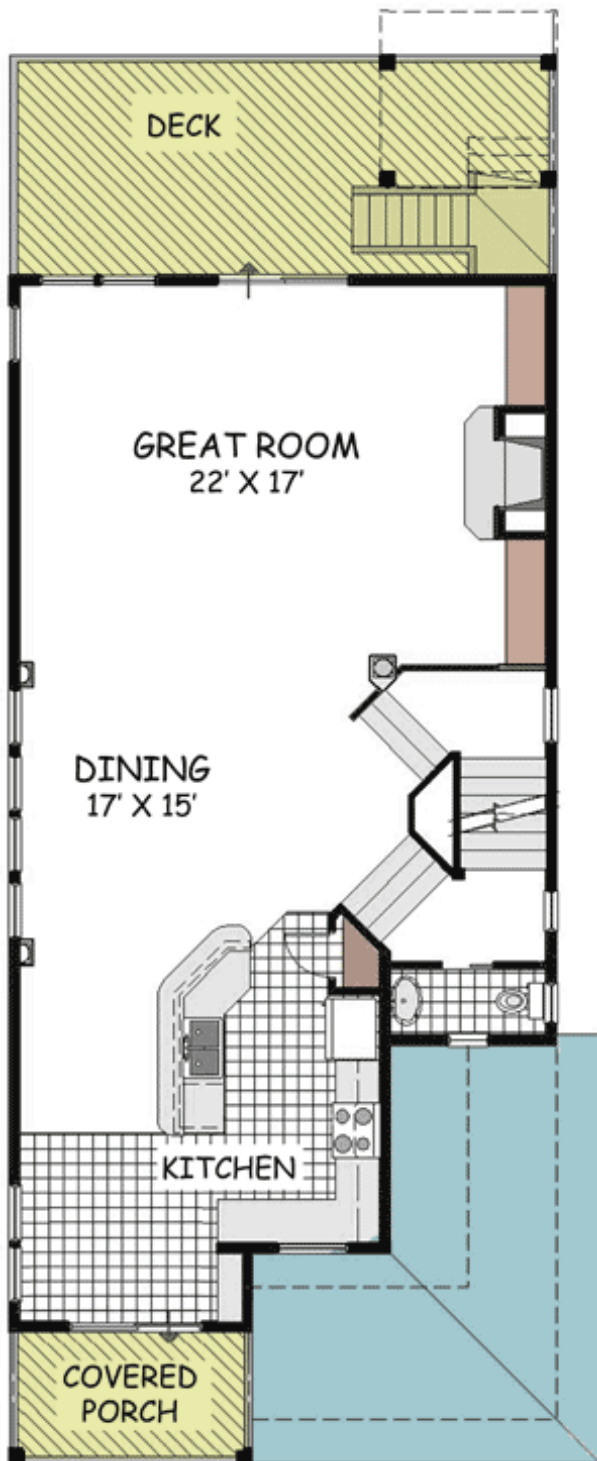
## Main Level



## 2nd Level



Third Floor



# Architectural Designs ...selling quality house plans for over 30 years.

Photo



## Sides/Rear



Front Elevation



Rear Elevation



Right Elevation



Left Elevation

# Architectural Designs ...selling quality house plans for over 30 years.

## Interior



Great Room

