

Architectural Designs ...selling quality house plans for over 30 years.

Plan W51040MM: Charming Craftsman House Plan



House plans are Copyright © 2009 by our architects and designers.

- This Craftsman house plan provides a very functional split-floor plan layout with many of the features that your family desires including an expansive master bedroom / bath with trayed ceiling and plenty of storage space in the his and her walk-in closets.
- The large great room features an attractive vaulted ceiling and a gas log fireplace.
- Front and rear covered porches are great for enjoying the outdoors in comfort.
- The laundry room is conveniently located.
- An open kitchen layout with plenty of counter space for that growing family is sure to please.
- The basement foundation option makes for a great value with a wide variety of innovative features.
- Related Plans: Get more room with house plan 51122MM (1,853 s.f.). Need a reverse layout? See these related Craftsman home plans: 51041MM (1,800 s.f.) and 51043MM (2,067 s.f.).
- For a more traditional exterior, see these related house plans: 5188MM (1,800 s.f., side-entry garage), 5191MM (2,250 s.f., side-entry garage) and 5192MM (2,500 s.f., front-entry garage).

Style: Craftsman, Northwest

Total Living Area: 1509

Main Flr.: 1509

Porch, Combined: 103 sq. ft.

Storage: 18 sq. ft.

Total Square Feet: 2,107 sq. ft.

Attached Garage: 2 Car, 477 sq. ft.

Bedrooms: 3

Full Bathrooms: 2

Width: 61'

Depth: 47'4"

Maximum Ridge Height: 22'1

Exterior Walls: 2x4

Ceiling Height:

Main Floor: 9'

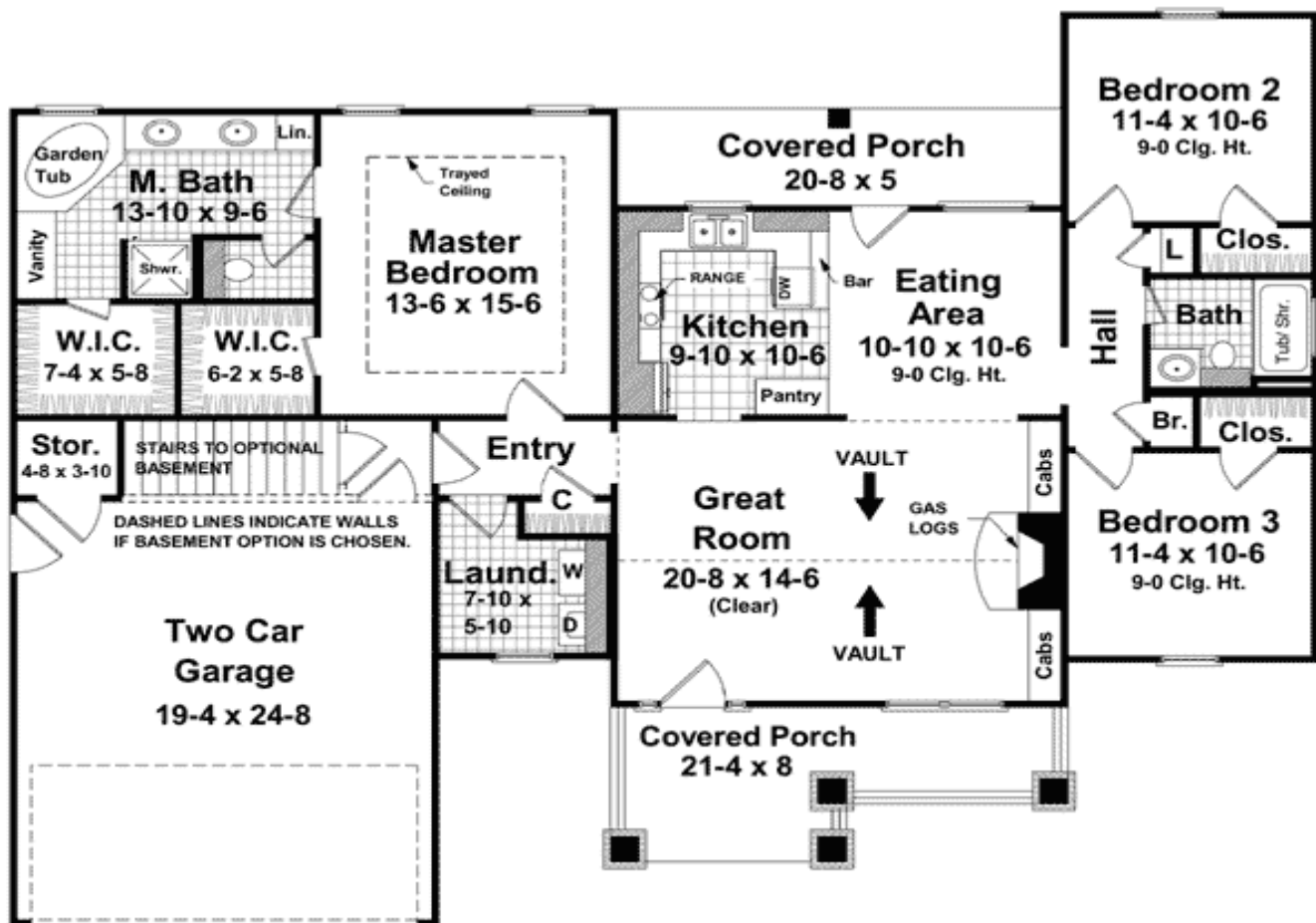
Other: Vaulted Great Room; Tray MBR

Standard Foundations: Slab, Basement

Special Features: 1st Floor Master Suite, Photo Gallery, CAD Available, PDF, Split Bedrooms, Corner Lot

One Set	Five Sets	Eight Sets	Reproducible	PDF File	CAD
\$585	\$645	\$780	\$805	\$805	\$1,305

Main Level



Rear View



Great Room



Great Rm Vw2



Kitchen



Kitchen Vw2

