

Architectural Designs ...selling quality house plans for over 30 years.

Plan W21502DR: Affordable One Bedroom House Plan



House plans are Copyright © 2009 by our architects and designers.

- Imagine this as your private getaway - no guest just you, two covered porches and your affordable house plan.
- No inch is wasted which is important in a design of this size. A coat closet is a nice feature in the enclosed entry.
- front hall.
- The kitchen is spacious and can fit a dining table. A door leads to a side porch, a perfect spot for a light meal. To the side, a small built-in desk is the perfect spot for getting some work done.
- The living area has two columns helping define the space.
- The 5-fixture bath features everything you'd expect in a house twice the size. There's plenty of closet space in the bedroom.
- Your washer/dryer are tucked away behind a pocket door.
- Related Plans: For an alternate exterior, 21501DR
- For something slightly smaller see house plans 21497DR and 21498DR both 1,108 sq. ft.

Style: Canadian, European, Metric, Southern

Total Living Area: 1134

Main Flr.: 1134

Total Square Feet: 1,134 sq. ft.

Bedrooms: 1

Full Bathrooms: 1

Width: 36'4"

Depth: 36'4"

Maximum Ridge Height: 28'4"

Exterior Walls: 2x6

Ceiling Height:

Main Floor: 9'

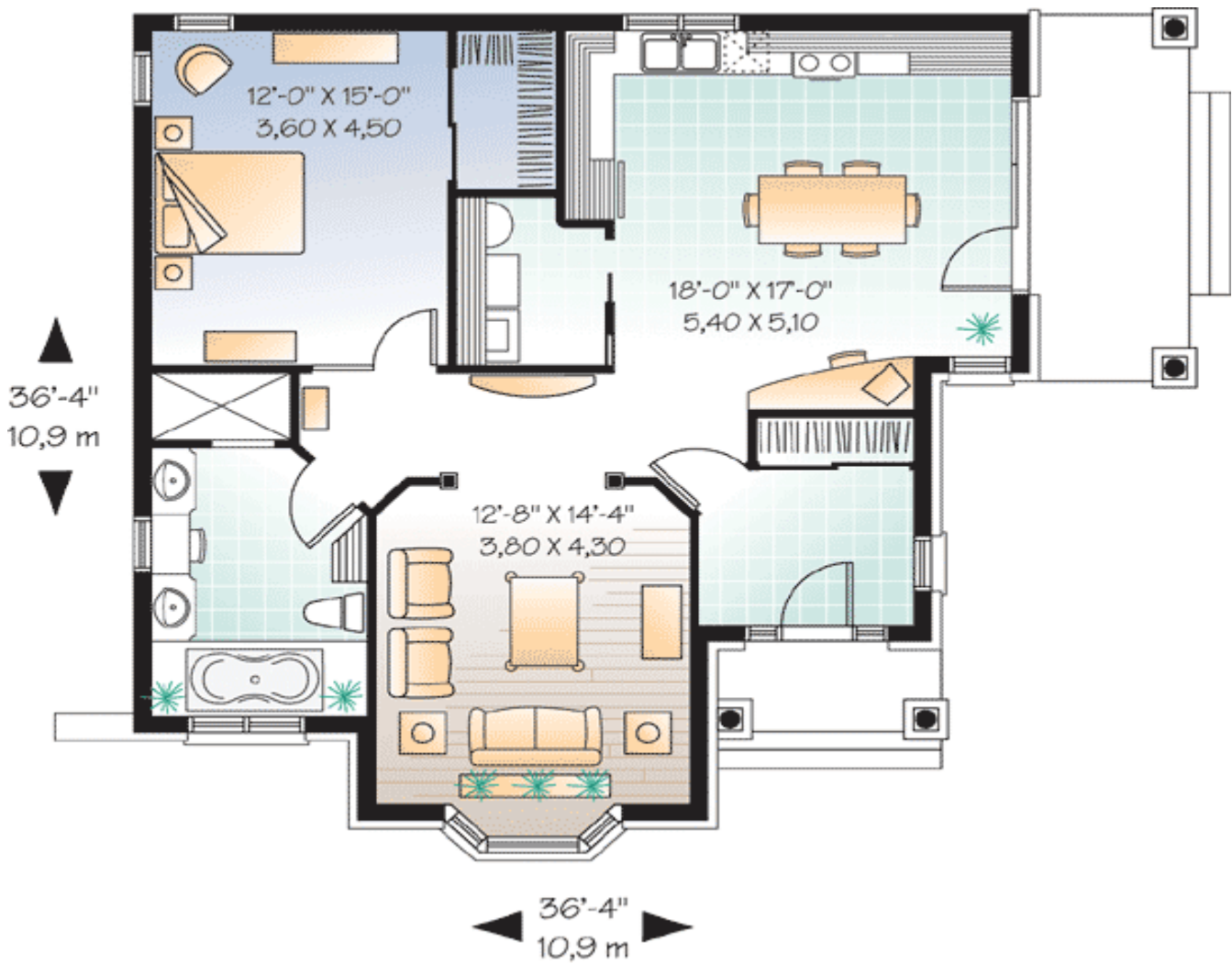
Standard Foundations: Crawl

Alternate Foundations: Slab (\$295), Basement (\$295)

Special Features: Narrow Lot, 1st Floor Master Suite, PDF, CAD Available

One Set	Five Sets	Eight Sets	Reproducible	PDF File	CAD
\$499	\$539	\$569	\$749	\$749	\$1,430

Main Level



Rear View

