

Plan W59036ND: Grand Views



House plans are Copyright © 2009 by our architects and designers.

- This beautiful log home has remarkable street appeal and a spacious floor plan.
- A lovely covered deck leads into the living room with rock fireplace for cozy evenings. Both the dining room and kitchen open to the living room and access a rear covered deck.
- The master suite is privately located on the main level and includes a large walk-in closet, luxurious private bathroom and private deck.
- Upstairs you'll find a loft area with sun deck and balcony view to below, a large bathroom and bedroom with plenty of storage, sun deck and dormer window.
- Ceilings: 8' standard.
- Foundation: Basement, crawl space, daylight basement. Please specify your preference when ordering.

Style: Log, Mountain

Total Living Area: 1743

Main Flr.: 1194

2nd Flr.: 549

Front Porch: 82 sq. ft.

Rear Porch: 51 sq. ft.

Balcony/Veranda: 60 sq. ft.

Total Square Feet: 1,936 sq. ft.

Bedrooms: 2

Full Bathrooms: 2

Half Bathrooms: 1

Width: 51'8"

Depth: 41'10"

Exterior Walls: Log

Ceiling Height:

Main Floor: 8'

Standard Foundations: Crawl

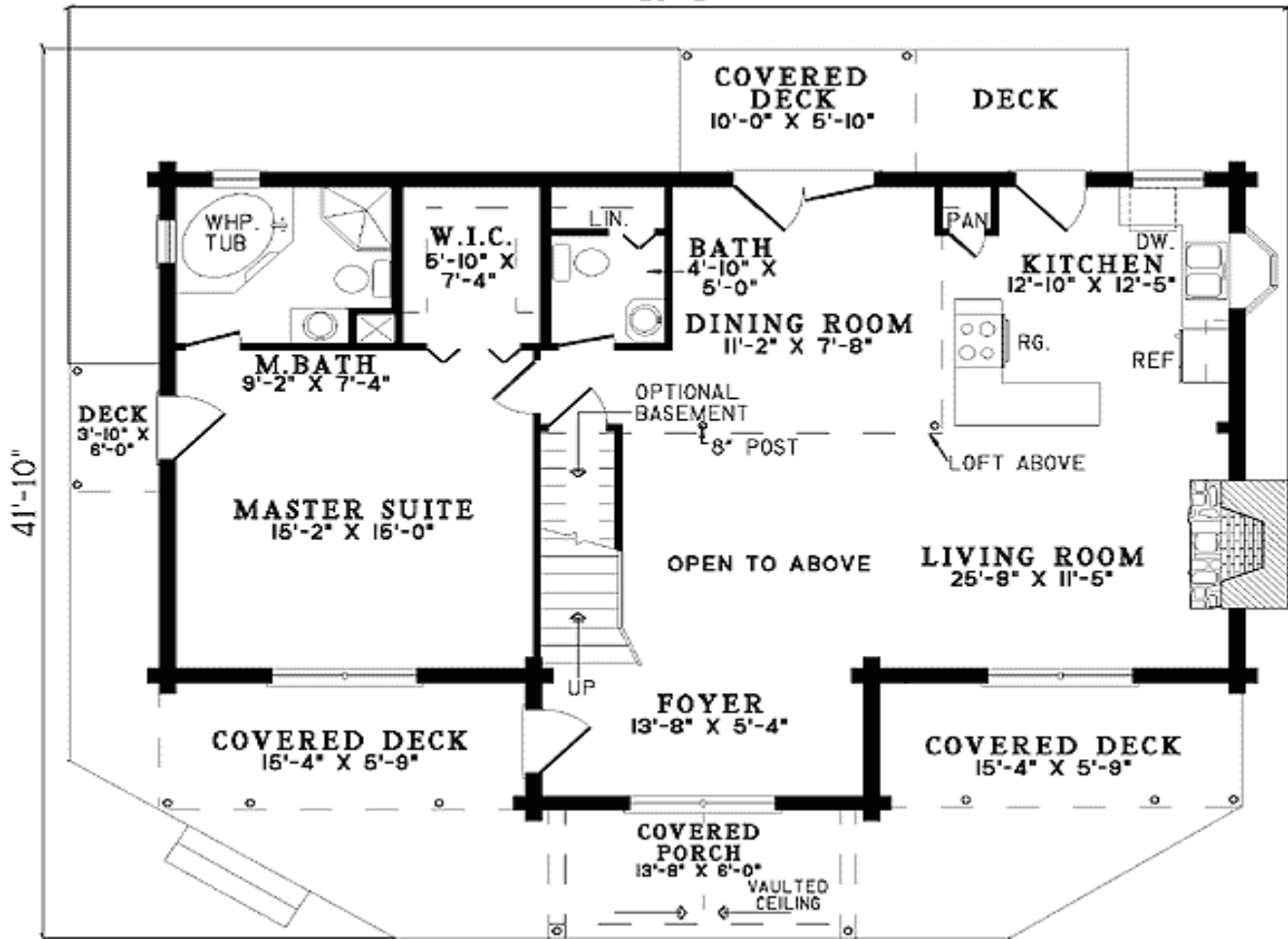
Alternate Foundations: Walkout (\$250), Basement (\$250)

Special Features: PDF, Sloping Lot, 1st Floor Master Suite

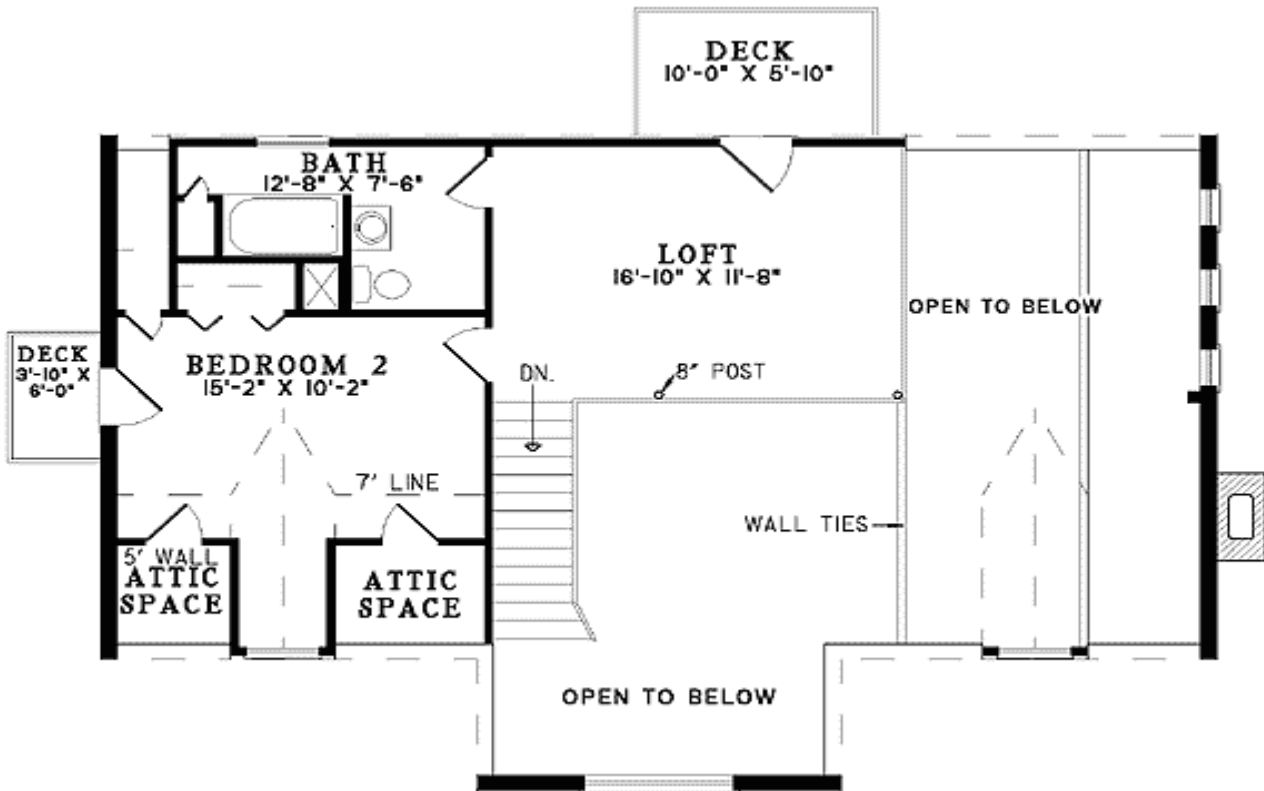
One Set	Five Sets	Eight Sets	Reproducible	PDF File	CAD
\$545	\$610	\$640	\$790	\$790	\$1,350

Main Level

51'-8"



2nd Level



Rear View

