

Architectural Designs ...selling quality house plans for over 30 years.

Plan W59042ND: Cozy Covered Porches



House plans are Copyright © 2009 by our architects and designers.

- This unique log home plan provides for several cozy covered porches connected by wooden decks. The large living room with fireplace has access to a gabled porch.
- The kitchen with eat-at bar also accesses a porch and sunroom. The laundry room can be reached from the dining room and sunroom.
- The master suite includes private porch access, a large walk-in closet with sink and a master bath with corner whirlpool bath and corner shower.
- Along with bedroom two, every room upstairs provides ample closet space from bedroom three to the loft, both with private access to a covered porch with vaulted ceiling and attics.
- Ceilings: 8' standard.
- Foundation: Basement, crawl space, daylight basement. Please specify your preference when ordering.

Style: Log, Mountain

Total Living Area: 3378

Main Flr.: 2216

2nd Flr.: 1162

Porch, Combined: 798 sq. ft.

Total Square Feet: 4,176 sq. ft.

Bedrooms: 3

Full Bathrooms: 2

Half Bathrooms: 1

Width: 73'8"

Depth: 55'8"

Exterior Walls: Log

Ceiling Height:

Main Floor: 8'

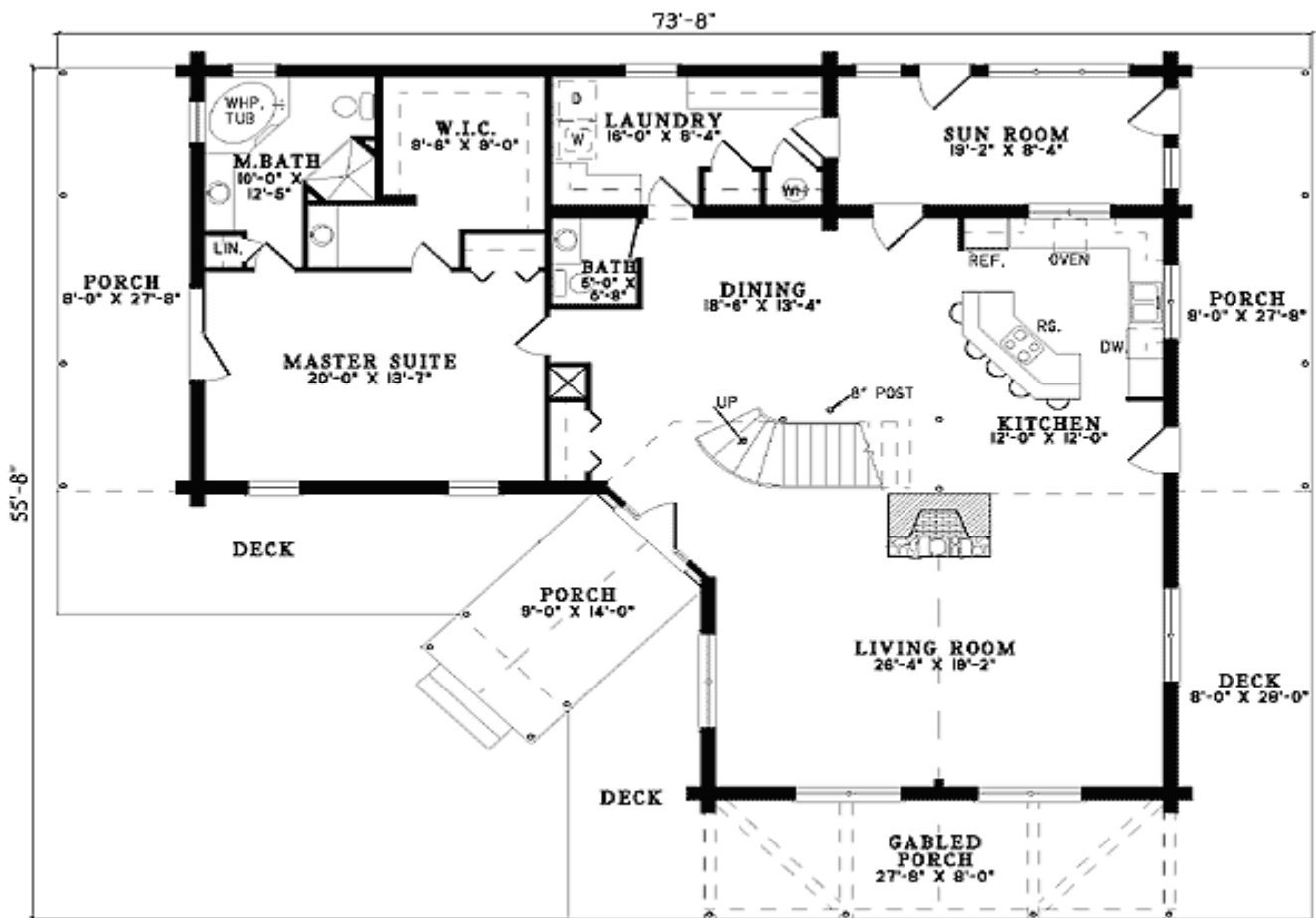
Standard Foundations: Crawl

Alternate Foundations: Walkout (\$250), Basement (\$250)

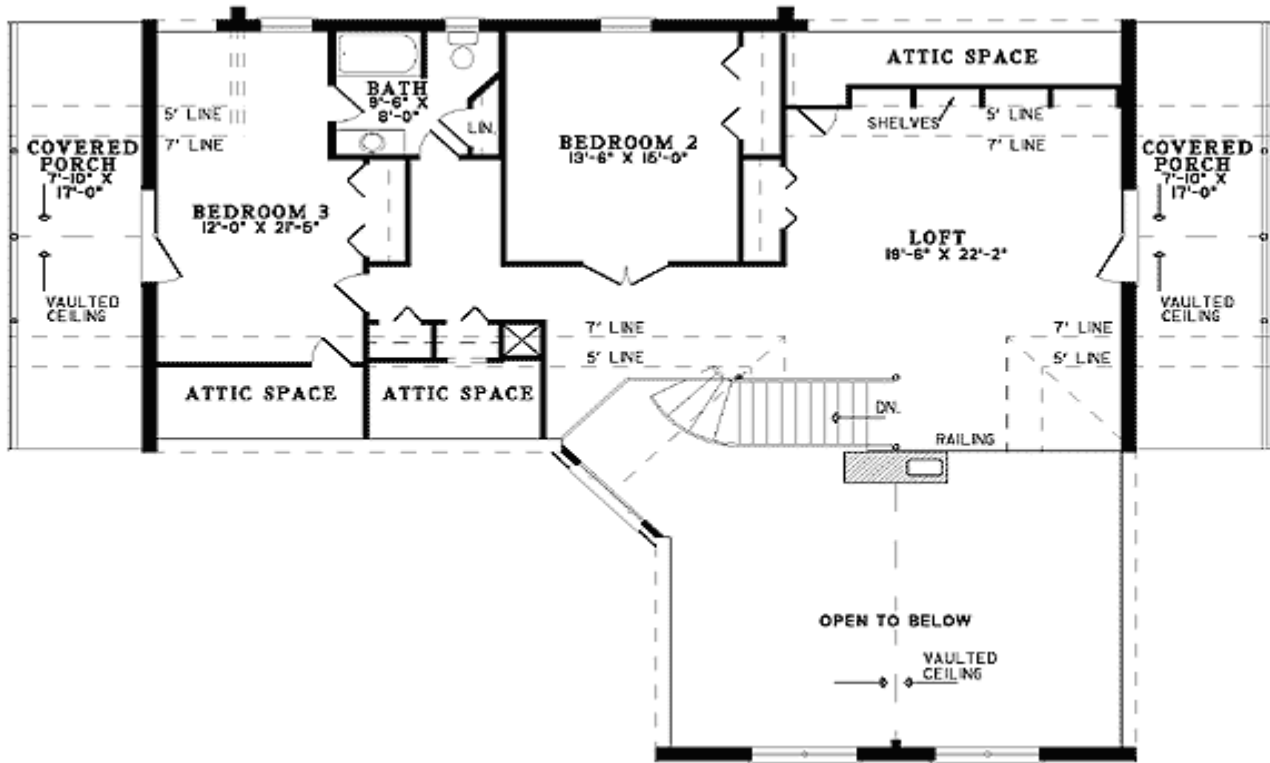
Special Features: PDF, 1st Floor Master Suite

One Set	Five Sets	Eight Sets	Reproducible	PDF File	CAD
\$635	\$750	\$805	\$1,060	\$1,060	\$1,800

Main Level



2nd Level



Rear View

