

Architectural Designs ...selling quality house plans for over 30 years.

Plan W8596MS: Large Great Room with Huge Picture Window



House plans are Copyright © 2009 by our architects and designers.

- The large great room contains a huge picture window. The open space from the great room to the dining room to the kitchen provides for great entertaining.
- The master suite commands the second floor. Two walk-in closets, one of which is huge, provides more than ample storage.
- The bonus room can be turned into a home theater, a game room or a large upstairs study.

Style: Northwest, Prairie Style

Total Living Area: 2375

Main Flr.: 1190

2nd Flr.: 1185

Bonus: 170 sq. ft.

Total Square Feet: 2,545 sq. ft.

Attached Garage: 3 Car, 0 sq. ft.

Bedrooms: 4

Full Bathrooms: 2

Half Bathrooms: 1

Width: 75'

Depth: 61'

Maximum Ridge Height: 26'

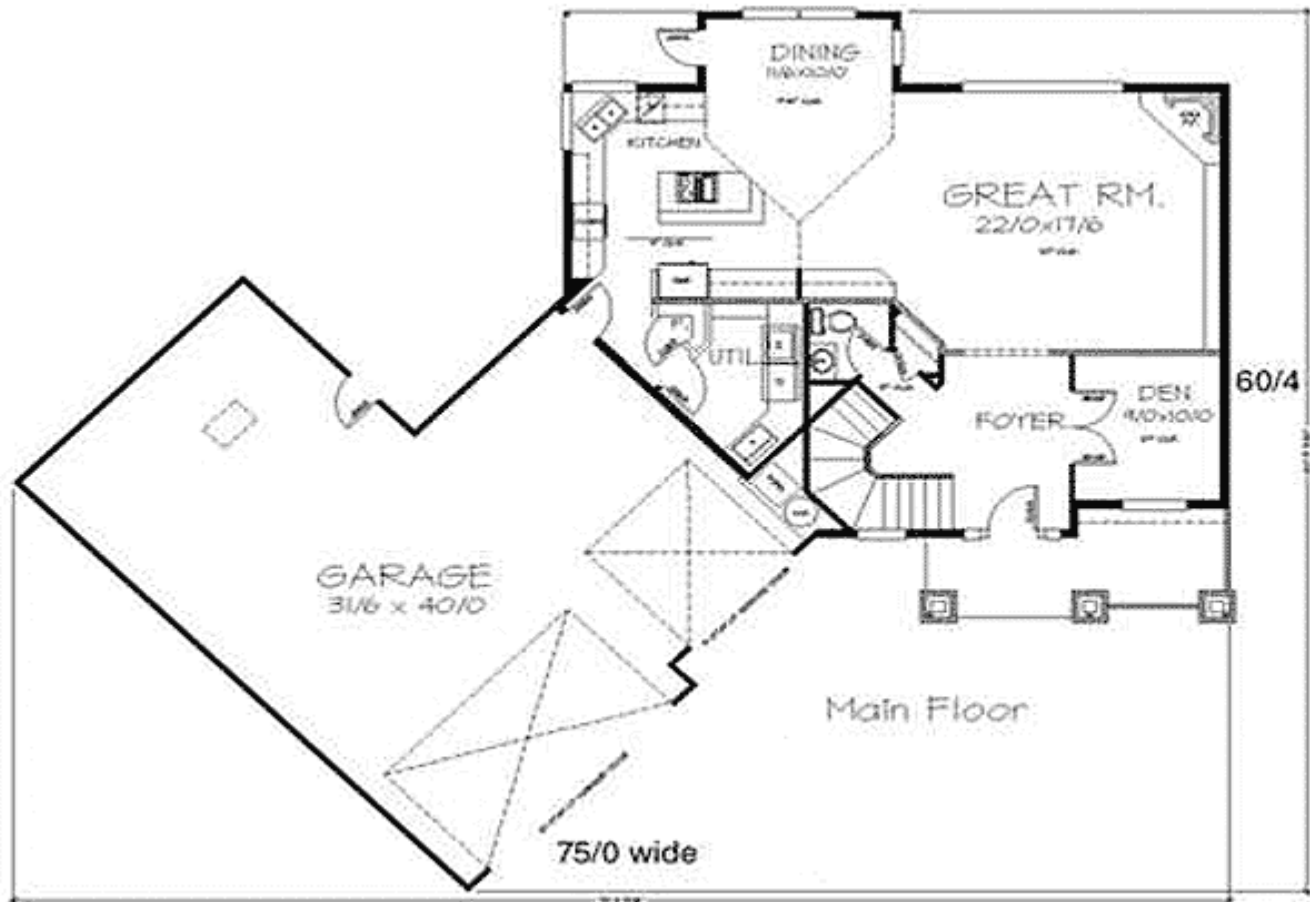
Ceiling Height:

Standard Foundations: Crawl

Special Features: PDF, Bonus Room, CAD Available

| | | | | | |
|---------|-----------|------------|--------------|----------|-------|
| One Set | Five Sets | Eight Sets | Reproducible | PDF File | CAD |
| \$594 | \$682 | \$772 | \$831 | \$831 | \$950 |

Main Level



2nd Level

