

Architectural Designs ...selling quality house plans for over 30 years.

Plan W6466HD: Spectacular Luxury in Multiple Versions



House plans are Copyright © 2009 by our architects and designers.

- Accented with brick, this spectacular traditional home plan offers massive Palladian windows and a 16' columned entry that opens to the foyer through double doors.
- Once inside, you see the elegant formal living room straight ahead and the formal dining room to one side.
- The family room and kitchen area offer a cooktop island and a snack bar. The family room is filled with beautiful windows and a slider out to the patio.
- Totally luxurious, the master suite includes his-and-her walk-in closets and vanities, a garden tub and separate shower.
- On the other side of the house, two family bedrooms share a bath. A den or fourth bedroom completes the floor.
- Bonus space over the three-car garage could become a play room or perhaps another bedroom.
- Related Plans: For an alternate exterior, see house plan 6451HD.
- Need a rear-facing garage? See house plans 6307HD, 6481HD and 6321HD.

Style: Florida, Southern

Total Living Area: 3412

Main Flr.: 2716

2nd Flr.: 696

Porch, Combined: 705 sq. ft.

Total Square Feet: 5,049 sq. ft.

Attached Garage: 3 Car, 932 sq. ft.

Bedrooms: 4

Full Bathrooms: 3

Width: 96'10"

Depth: 54'8"

Maximum Ridge Height: 26'

Exterior Walls: Block

Ceiling Height:

Main Floor: 10'

Other: 14' Living, Dining & Den; 16'8" Foyer; 8' Bonus

Standard Foundations: Slab

Special Features: PDF, Corner Lot, 1st Floor Master Suite, Bonus Room, Split Bedrooms

One Set
\$735

Five Sets
\$775

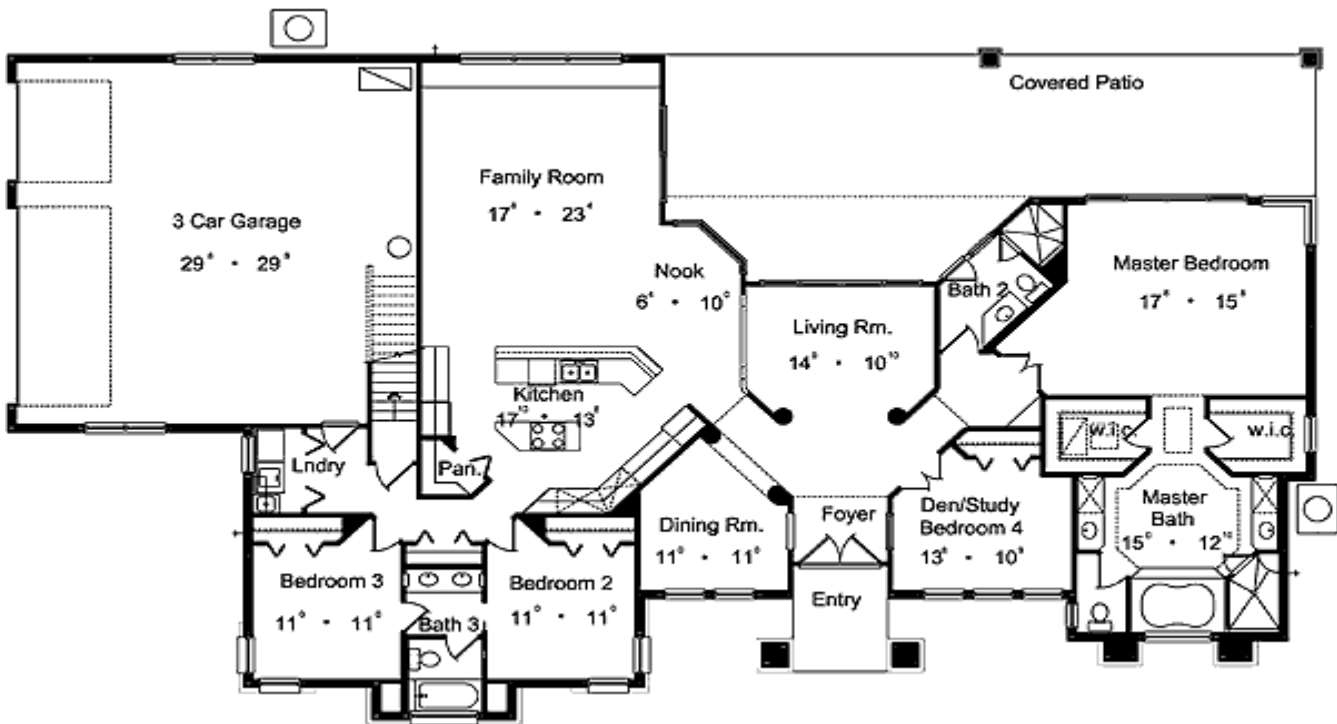
Eight Sets
\$825

Reproducible
\$915

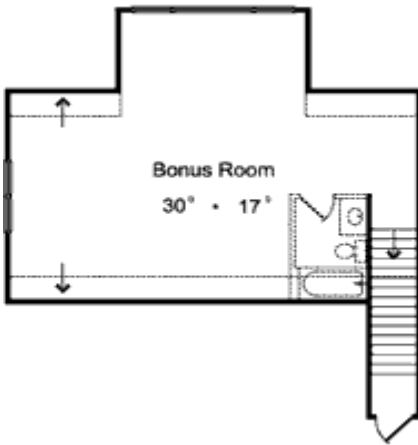
PDF File
\$915

CAD
\$1,830

Main Level



2nd Level



Elevation #2



Rear View

