

Plan W3171D: Imposing Outside, Very Livable Within



House plans are Copyright © 2009 by our architects and designers.

- A hipped roof, an entry with columns and a door flanked by sidelights and topped by an arched transom, plus two arched windows, greet visitors to this transitional-style home plan most impressively.
- The comfortable public portion of the house consists of a formal dining room delineated by columns, a polygonally shaped study, a fireplaced living room and a sensational kitchen with a pantry closet, two islands and a large breakfast bar that divides it from the morning room.
- Walled almost entirely with windows and access to the covered patio in back, the morning room is a bright and cheerful gathering place.
- In the bedroom wing, the master bedroom opens to the patio, while the compartmented master bath features two large walk-in closets, garden tub, glass-block shower and two higher lavatories. Bedrooms two and three share the other full bath.
- The side-entry garage is big enough to store a golf cart.
- Foundation: basement, slab or crawl space. Specify when ordering.
- See this related house plan: 31002D.

Style: European, Southern

Total Living Area: 2387

Main Flr.: 2387

Entry: 64 sq. ft.

Total Square Feet: 3,036 sq. ft.

Attached Garage: 2 Car, 585 sq. ft.

Bedrooms: 3

Full Bathrooms: 2

Half Bathrooms: 1

Width: 64'10"

Depth: 66'2"

Maximum Ridge Height: 26'

Exterior Walls: 2x4

Ceiling Height:

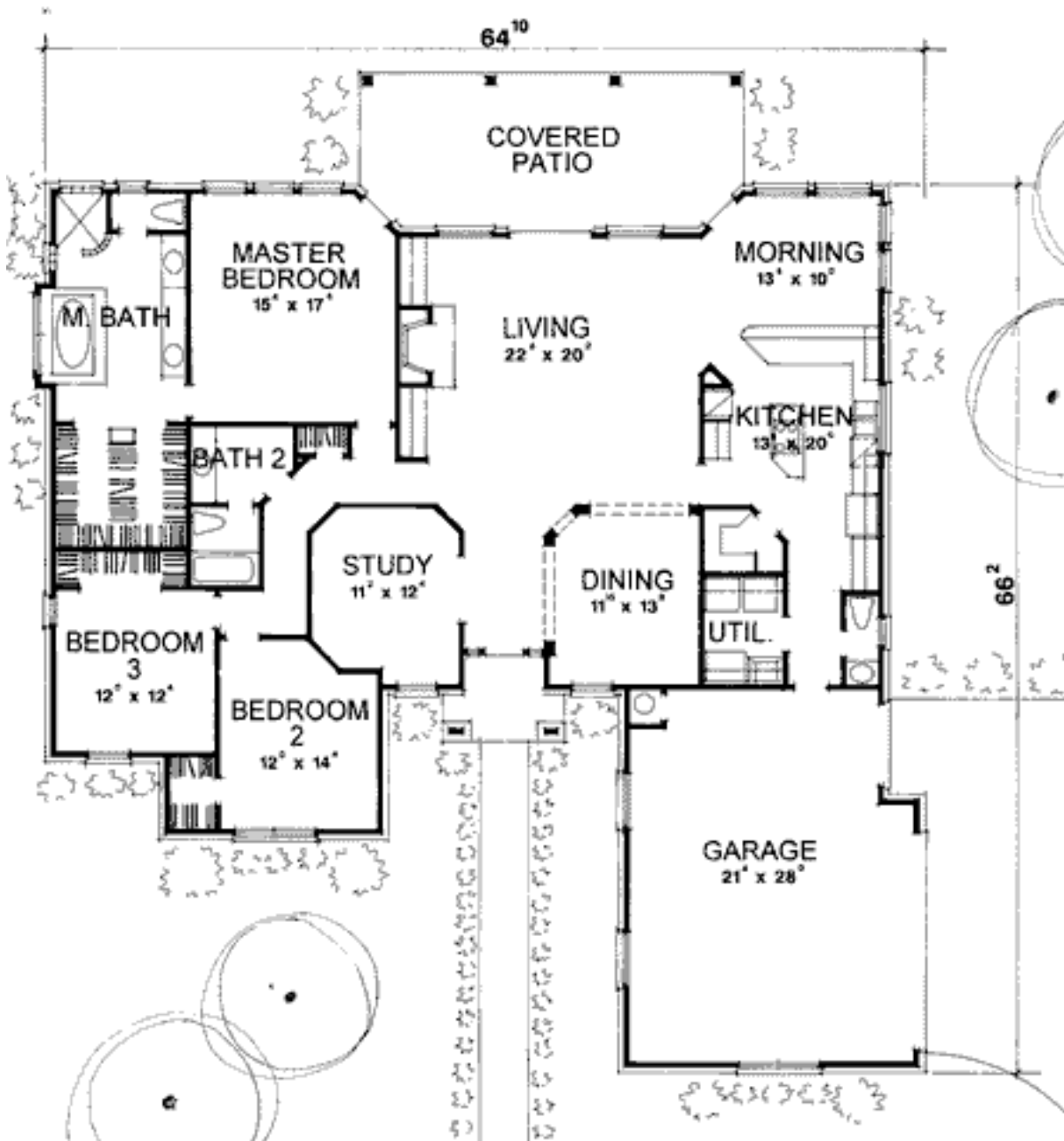
Other: 10' Living, Kitchen, Study, Breakfast, MBR; 8' BR#3;10-12' BR#2; 12' Entry

Standard Foundations: Slab, Basement

Special Features: 1st Floor Master Suite, CAD Available, Corner Lot, Den-Office-Library-Study

One Set	Five Sets	Eight Sets	Reproducible	CAD
\$665	\$740	\$810	\$995	\$2,270

Main Level



Rear View

