

Architectural Designs ...selling quality house plans for over 30 years.

Plan W33522EB: Angled Leisure and Nook



House plans are Copyright © 2009 by our architects and designers.

- Designed to look like a much larger home from the streetscape than it really is, this home plan has a raised entry, rooftop railing detail, brick, European shutters, and a high gabled study to give it curb appeal.
- The formal dining room and parlour are located off the foyer and feature high ceilings for an open feel.
- A wetbar serving area between the parlour and the kitchen is perfect for entertaining.
- A flowing family space faces the backyard through large sliding glass doors. The covered veranda has an outdoor kitchen and sitting spaces making the area flow with the inside.
- On the opposite wing, the study faces the front garden area and is a wonderful office or library.
- The master suite features a bayed sitting retreat facing the rear views. Ample his and her walk in wardrobe closets are located on the hall to the bathroom.
- The two guest suites are separated from the master wing for owner privacy.
- Related Plan: See this plan in a reverse layout in house plan 33505EB.

Style: Florida, Southern

Total Living Area: 2526

Main Flr.: 2526

Balcony/Veranda: 552 sq. ft.

Entry: 82 sq. ft.

Total Square Feet: 3,847 sq. ft.

Attached Garage: 2 Car, 703 sq. ft.

Bedrooms: 3

Full Bathrooms: 3

Half Bathrooms: 1

Width: 65'

Depth: 80'8"

Maximum Ridge Height: 27'9

Exterior Walls: 2x4 or 2x6 or Block

Ceiling Height:

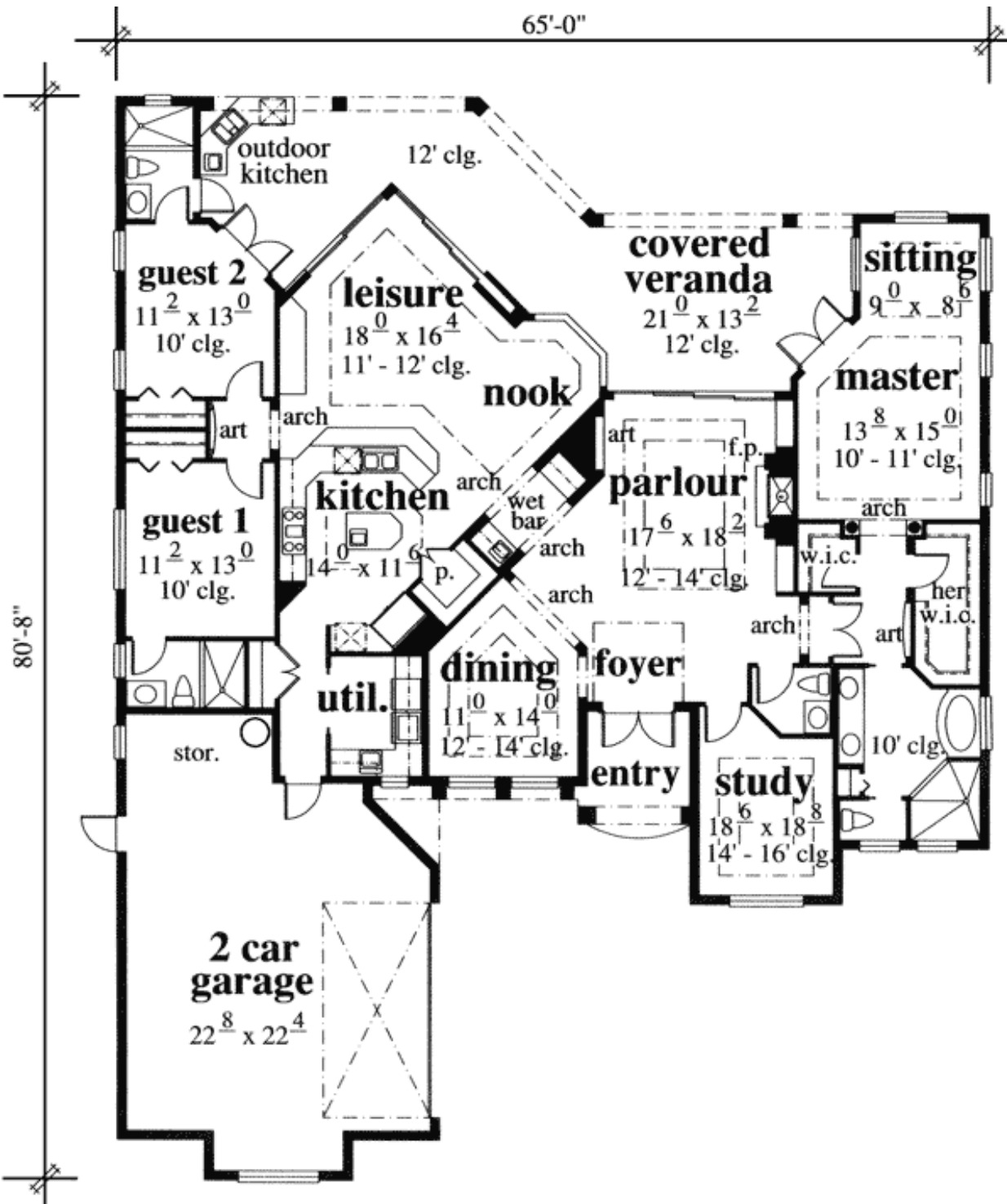
Standard Foundations: Slab

Special Features: PDF, Photo Gallery, Split Bedrooms, Den-Office-Library-Study, Butler Walk-in Pantry, CAD Available, 1st Floor Master Suite, MBR Sitting Area

Reproducible	PDF File	CAD
\$1,263	\$1,313	\$1,463

Main Level

65'-0"



Architectural Designs ...selling quality house plans for over 30 years.

Photo



Photo #2



Rear View

