

Plan W9808SW: Vacation in the Woods



House plans are Copyright © 2009 by our architects and designers.

- This house plan's multi-purpose great room with wrap-around covered porch encourages relaxed entertaining and is perfectly suited for evolving family activities.
- The large U-shaped kitchen with raised breakfast bar is open to the great room ensuring everyone is included in the fun.
- The second level vaulted studio with private covered balcony easily transforms this retreat space into a home office or voluminous third bedroom if desired.
- Related Plans: Need a larger master bedroom? See house plan 9812SW.
- Also see these related house plans: 9801SW, 9805SW, 9807SW and 9810SW.

Style: Canadian, Contemporary, Mountain, Vacation

Total Living Area: 1644

Main Flr.: 955

2nd Flr.: 689

Porch, Combined: 178 sq. ft.

Deck: 474 sq. ft.

Total Square Feet: 2,296 sq. ft.

Bedrooms: 2

Full Bathrooms: 2

Width: 36'

Depth: 50'6"

Maximum Ridge Height: 25'

Exterior Walls: 2x6

Ceiling Height:

Main Floor: 8'

2nd Floor: 10'

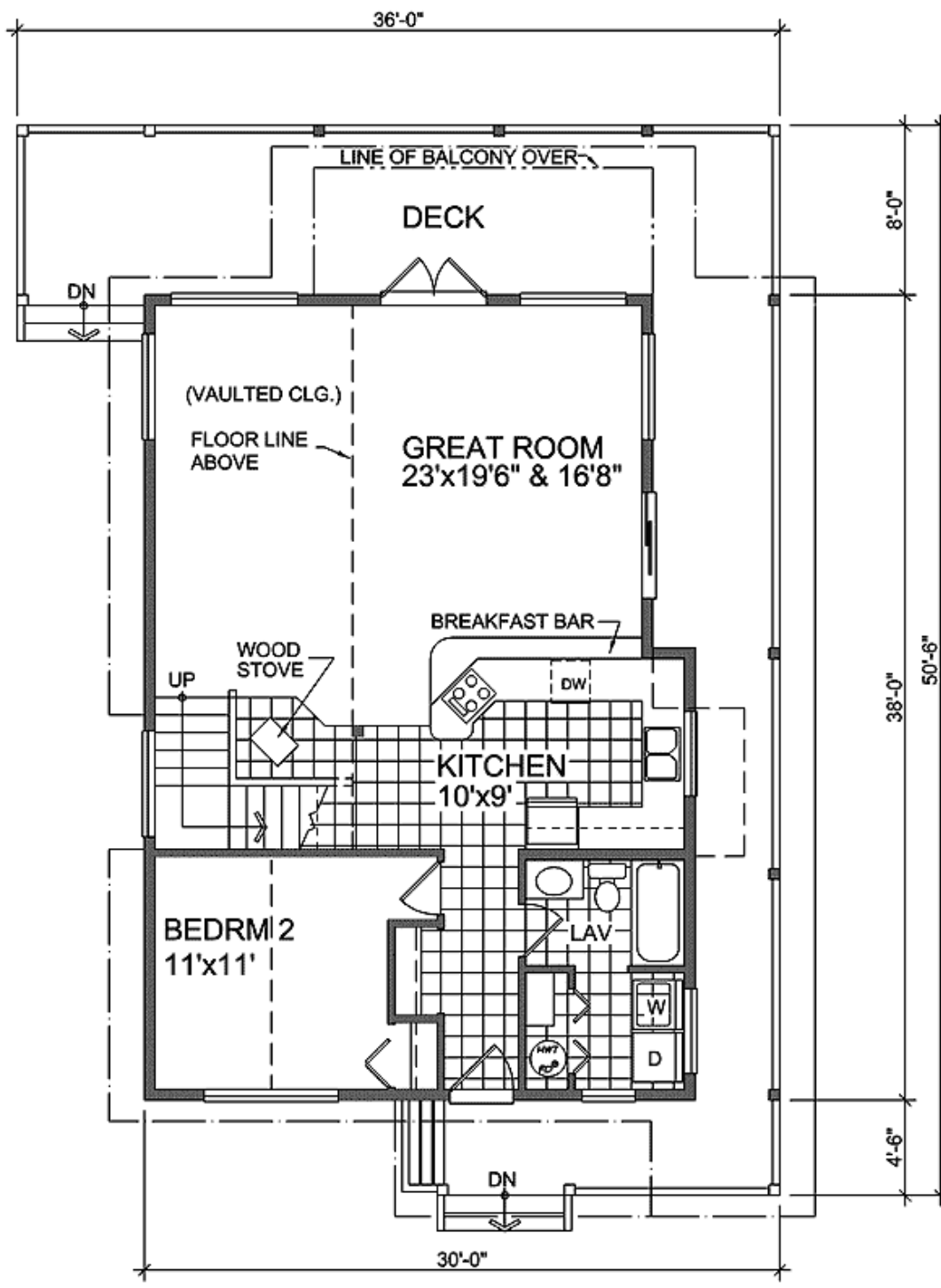
Other: 12' Some 2nd floor

Standard Foundations: Pier, Crawl

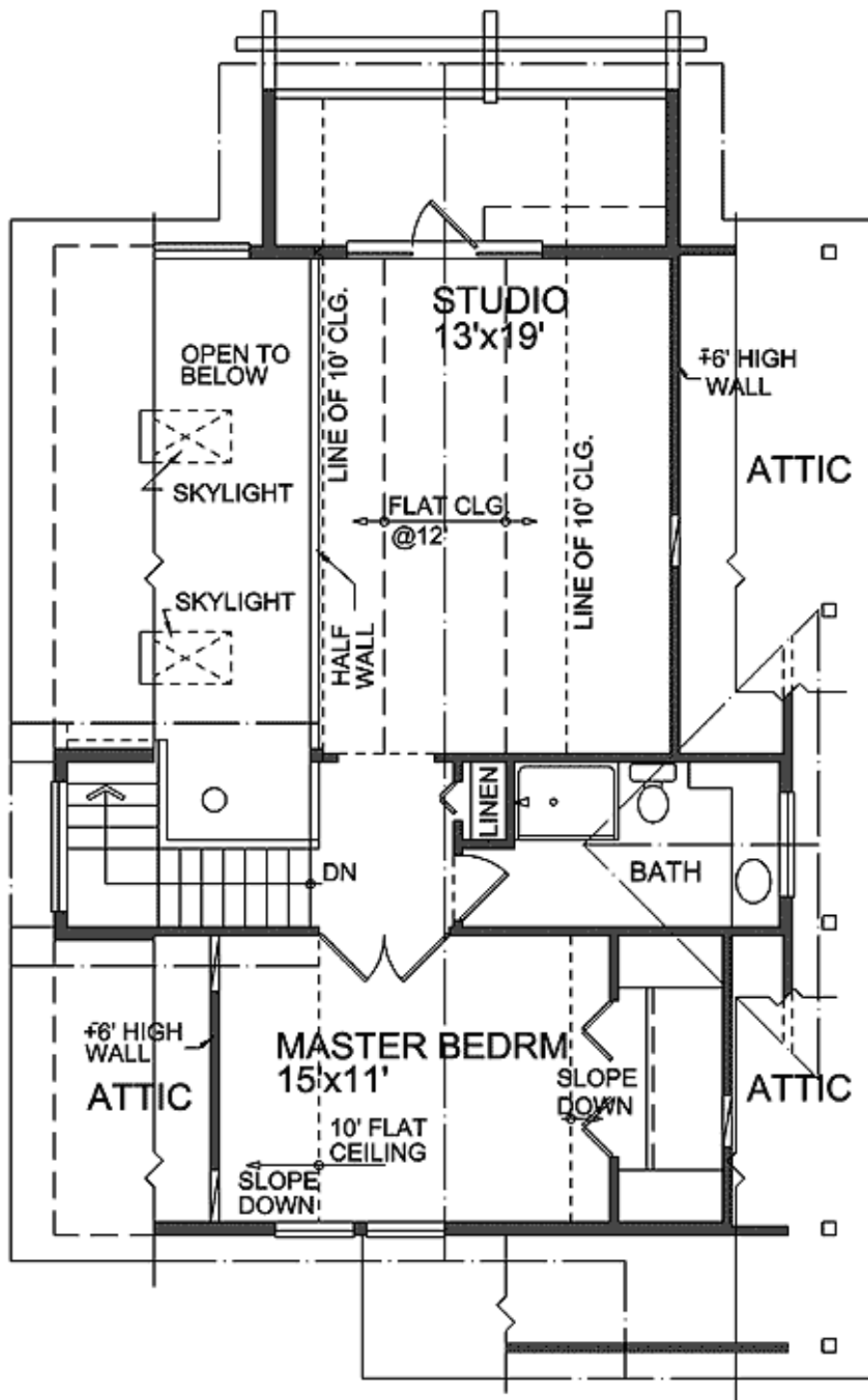
Special Features: CAD Available, Photo Gallery, PDF, Narrow Lot, Loft, Wrap Around Porch

One Set	Five Sets	Eight Sets	Reproducible	PDF File	CAD
\$450	\$505	\$550	\$670	\$670	\$870

Main Level



2nd Level



Elevation #2



Left Side



Right Side



Rear View

