

Architectural Designs ...selling quality house plans for over 30 years.

Plan W14005DT: Captivating Colonial



House plans are Copyright © 2009 by our architects and designers.

- Early America is revisited in this Colonial style house plan.
- Bay windows accent the large living room and formal dining room.
- In the kitchen, a corner sink, microwave oven, and pantry provide all of today's necessities. Direct access to the kitchen is obtained off of the 2-car garage.
- An upper balcony looks out through a Palladian window.
- The fabulous master bedroom has a walk-in closet and a private bathroom. Two additional bedrooms share a full bath, and are separated from the master for privacy.
- A full, unfinished basement holds a future bedroom and bathroom, as well as storage.

Style: Colonial, Traditional

Total Living Area: 1439

Main Flr.: 758

2nd Flr.: 691

Basement Unfinished: 710 sq. ft.

Deck: 133 sq. ft.

Total Square Feet: 1,497 sq. ft.

Attached Garage: 2 Car, 484 sq. ft.

Bedrooms: 3

Full Bathrooms: 2

Half Bathrooms: 1

Width: 52'

Depth: 30'4"

Maximum Ridge Height: 24'9

Exterior Walls: 2x6

Ceiling Height:

Main Floor: 8'

2nd Floor: 8'

Other: 2-Story Foyer

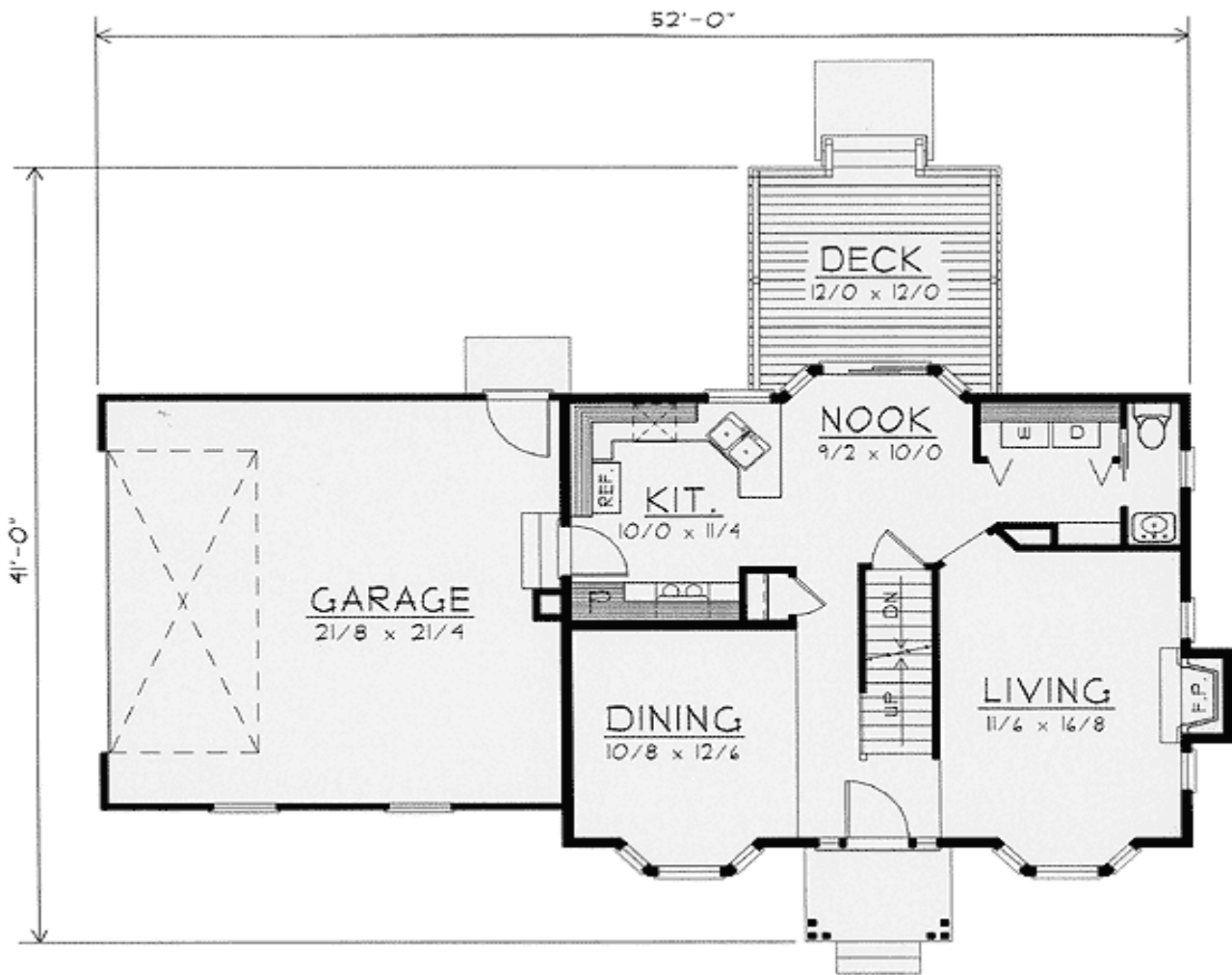
Standard Foundations: Basement

Alternate Foundations: Slab (\$100), Crawl (\$100)

Special Features: CAD Available

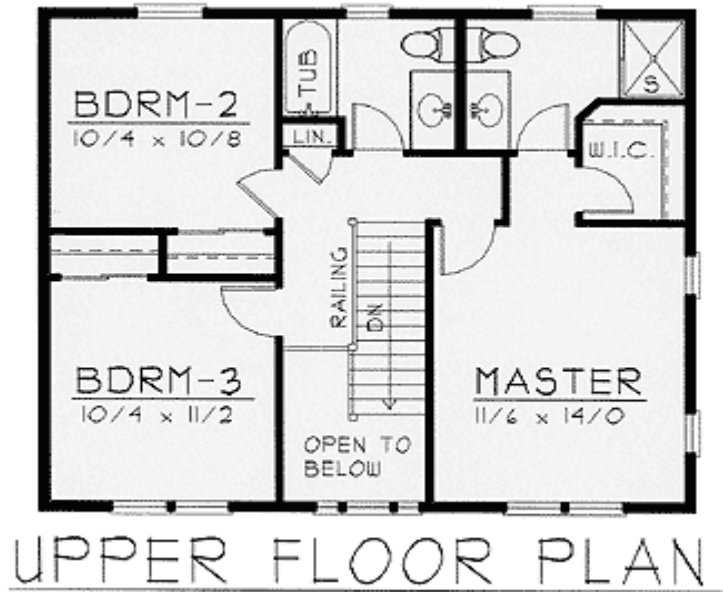
One Set	Five Sets	Eight Sets	Reproducible	CAD
\$480	\$560	\$620	\$880	\$1,120

Main Level



MAIN FLOOR PLAN

2nd Level



Rear View



REAR ELEVATION