

Architectural Designs ...selling quality house plans for over 30 years.

Plan W59029ND: Vacation Comforts at Home



House plans are Copyright © 2009 by our architects and designers.

- Through the entry porch you enter the open Great room with fireplace. The dining room with deck access is next to the kitchen with eat-at bar and pantry.
- Off of the dining room is the laundry room with access to a storage room and the garage with its own covered entry porch.
- The luxurious master suite has a fireplace and master bath with walk-in closet, double vanities and corner whirlpool bath.
- A spiral staircase leads to bedrooms two and three with ample closet space upstairs.
- The balcony opens to the loft with access to the covered porch. Bedroom three has access to storage room. The bonus room with private bath and ample closet space accesses a private balcony/deck.
- Ceilings: 8' standard.
- Foundation: crawl space.

Style: Log, Mountain

Total Living Area: 3284

Main Flr.: 1707

2nd Flr.: 1577

Total Square Feet: 4,080 sq. ft.

Attached Garage: 3 Car, 796 sq. ft.

Bedrooms: 3

Full Bathrooms: 2

Half Bathrooms: 2

Width: 76'6"

Depth: 57'

Exterior Walls: Log

Ceiling Height:

Main Floor: 8'

Other: 2-Story Entry

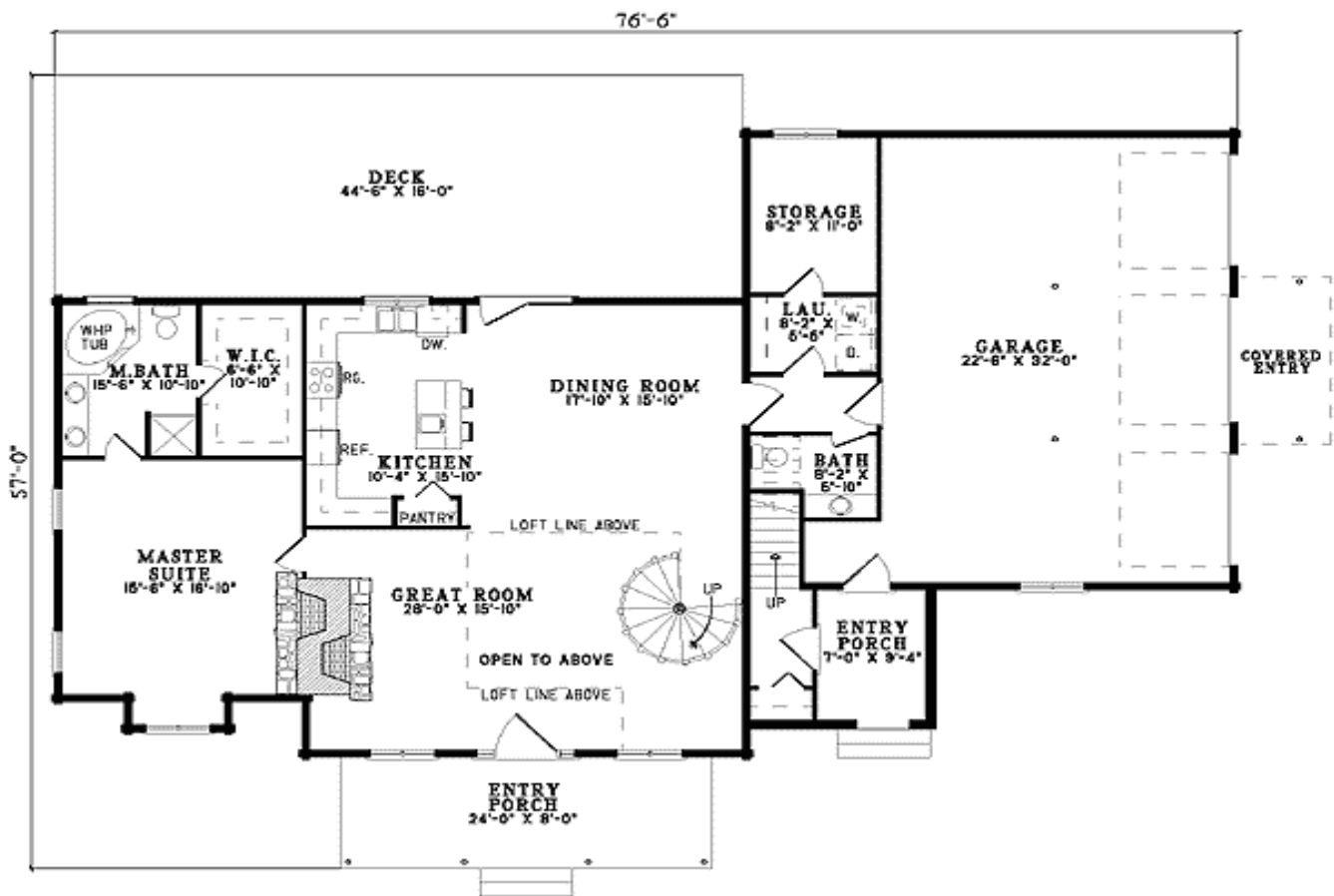
Standard Foundations: Crawl

Alternate Foundations: Walkout (\$250), Basement (\$250)

Special Features: PDF, 1st Floor Master Suite

One Set	Five Sets	Eight Sets	Reproducible	PDF File	CAD
\$635	\$750	\$805	\$1,060	\$1,060	\$1,800

Main Level



2nd Level

