

# Architectural Designs ...selling quality house plans for over 30 years.

Plan W35313GH: Mountain Home Plan with Drive-Under Garage



House plans are Copyright © 2009 by our architects and designers.

- A two-story great room that rises up to 23'6" provides walls of glass to take advantage of amazing views.
- Stroll out to the expansive deck from either the first floor master suite, great room or dining room.
- Two bedrooms and a loft area occupy the second floor while an unfinished basement with fireplace awaits your expansion.
- Related Plans: Split the garages with house plan 35393GH and get a 3-car garage with plan 35386GH.
- Need a side-entry garage? See house plan 35326GH.
- Prefer an attached garage? See house plans 35312GH, 35352GH and 35392GH.
- No garage need? See 35259GH, 35108GH, 35324GH and 35165GH with a finished lower level with a fireplaced rec room, wet bar, storage and office space.

Style: Contemporary, Metric, Mountain, Northwest, Vacation

Total Living Area: 2281

Main Flr.: 1436

2nd Flr.: 845

Basement Unfinished: 1,758 sq. ft.

Total Square Feet: 4,039 sq. ft.

Bedrooms: 3

Full Bathrooms: 2

Width: 58'6"

Depth: 47'7"

Maximum Ridge Height: 25'7"

Exterior Walls: 2x6

Ceiling Height:

Main Floor: 9'

Lower Floor: 9'

2nd Floor: 8'2"

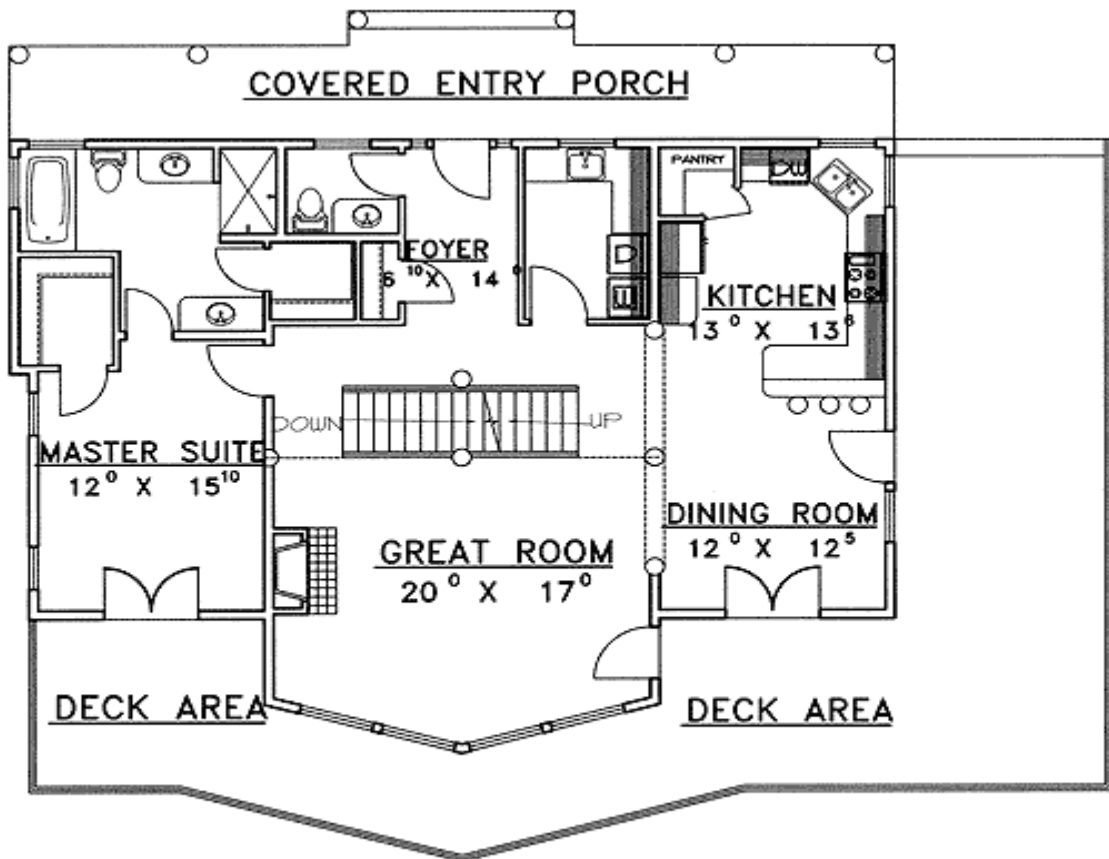
Other: 6'2"-9'6" Loft

Standard Foundations: Daylight

Special Features: Drive Under Garage, Wrap Around Porch, 1st Floor Master Suite, CAD Available, Sloping Lot, PDF, Photo Gallery

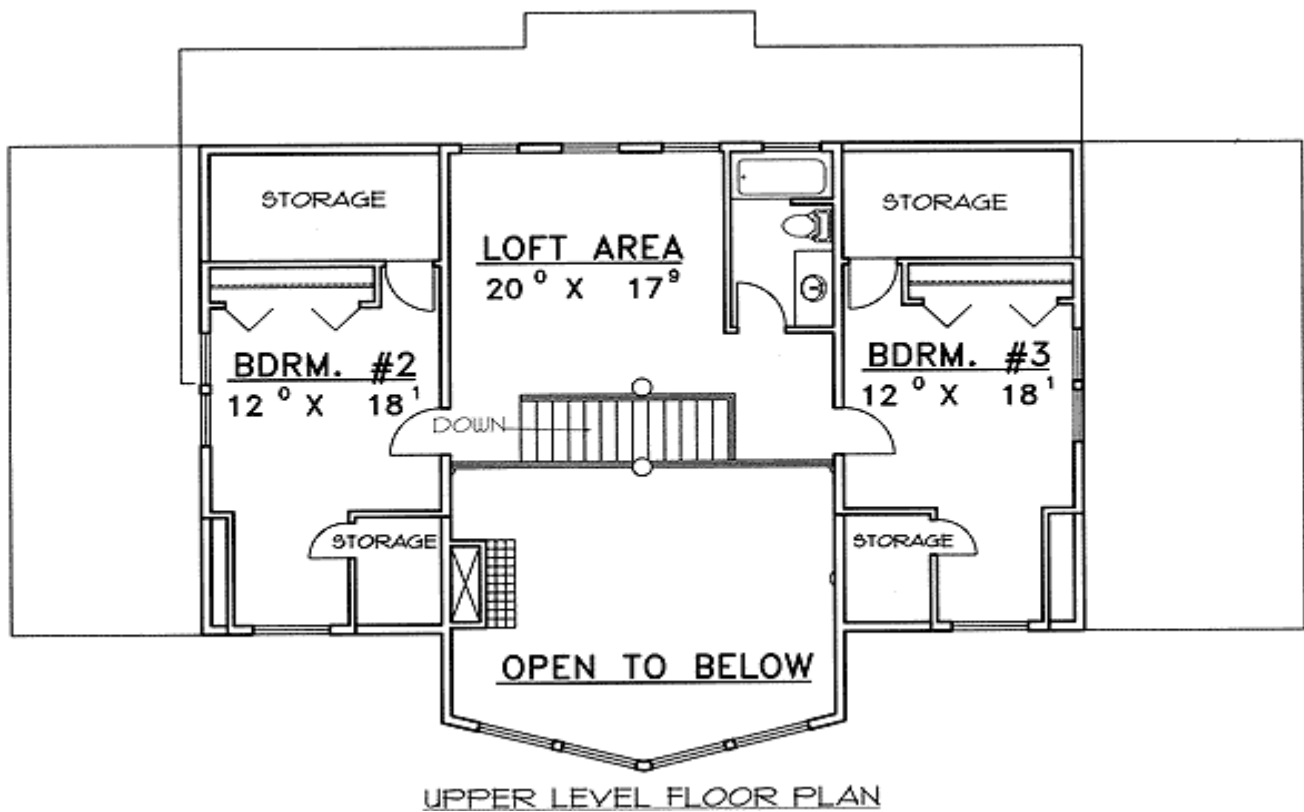
Five Sets	Eight Sets	Reproducible	PDF File	CAD
\$725	\$820	\$750	\$900	\$900

Main Level

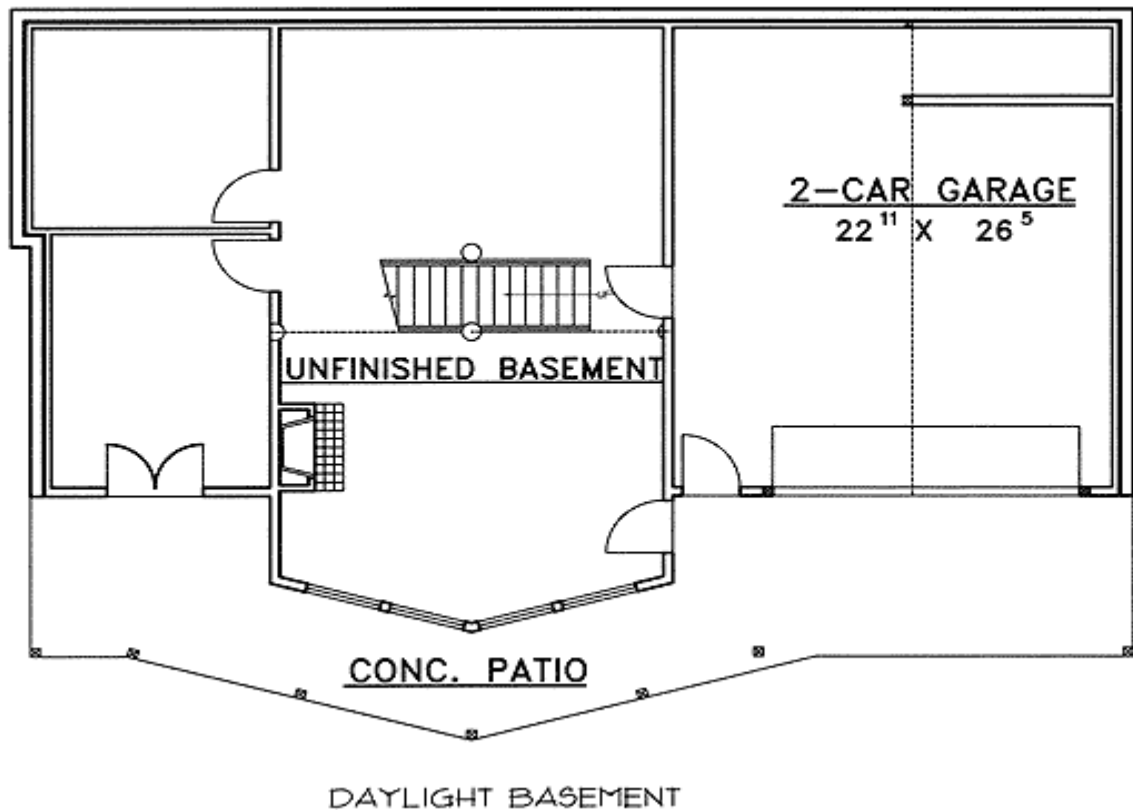


MAIN LEVEL FLOOR PLAN

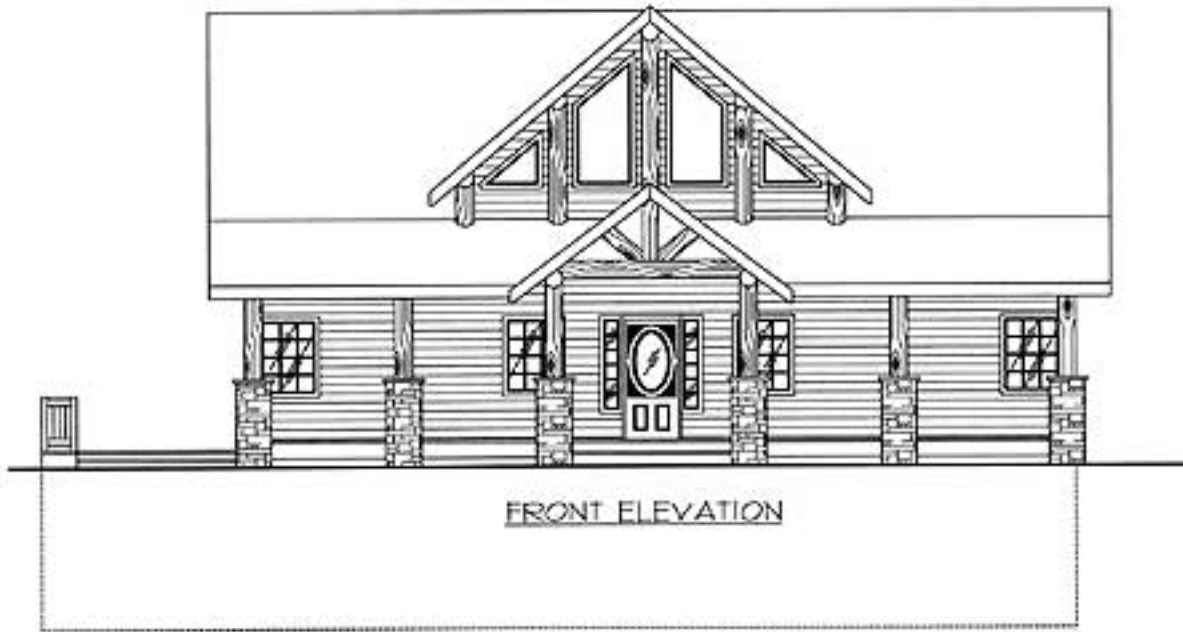
2nd Level



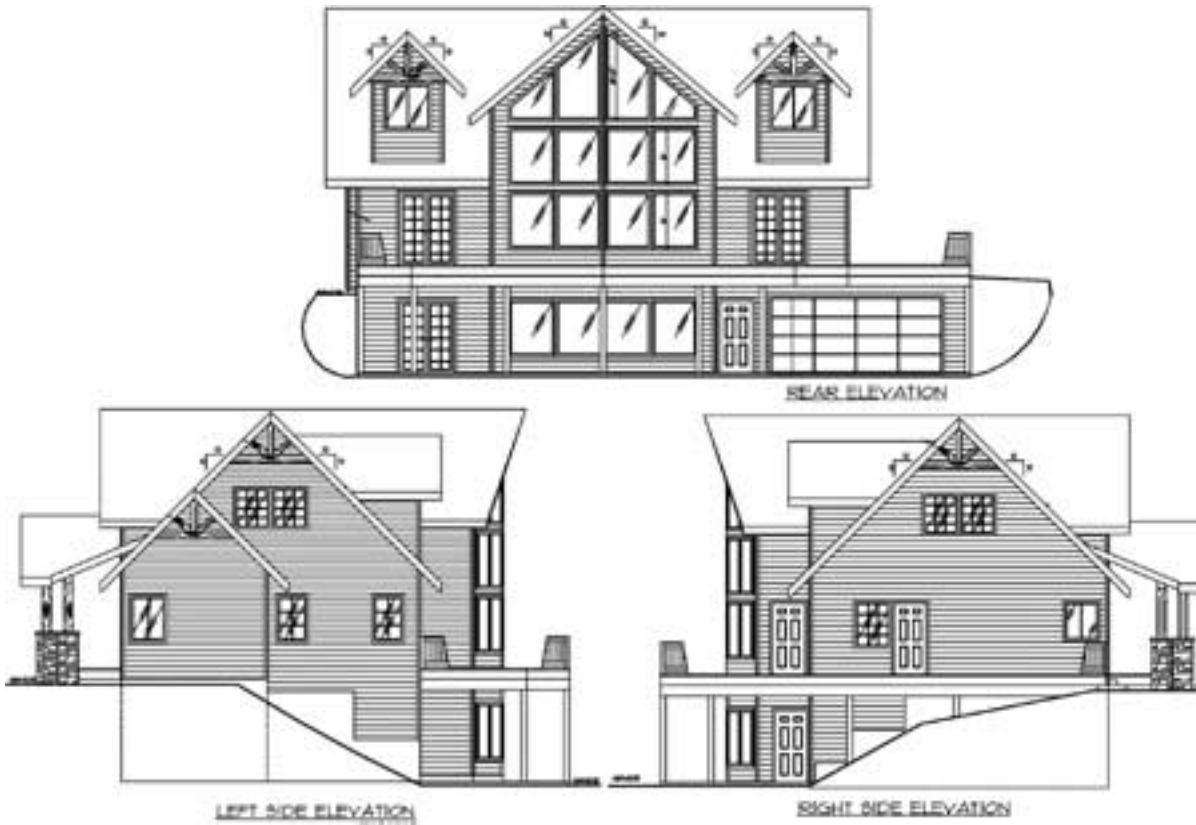
Lower Level



Elevation #2



## Sides/Rear



Great Room

