

Architectural Designs ...selling quality house plans for over 30 years.

Plan W5629AD: Colonial Beauty



House plans are Copyright © 2009 by our architects and designers.

- True to the Colonial period, this gracious Early American home plan features a brick facade, central gables, raised-panel shutters and jack-arch window treatments.
- The interior layout is contemporary. Formal living and dining rooms flank the two-story foyer. Also rising for two stories is the fireplaced family room, which constitutes one large space with the breakfast room and kitchen. The breakfast room opens to a covered porch that wraps around the rear and one side of the house, making it ideal for outdoor living.
- Featuring an angled snack bar, the kitchen is handy to both the breakfast and dining rooms.
- A vaulted ceiling tops the first-floor master bedroom. The deluxe compartmented master bath contains a walk-in closet, a step-up garden tub, a walk-in shower and two sinks with corner knee space.
- Upstairs, each bedroom contains a walk-in closet, and each has direct access to a bathroom. Left unfinished is a fourth bedroom, also with a walk-in closet, and with entry to the compartmented bath off bedroom three.

Style: Colonial, Traditional

Total Living Area: 2325

Main Flr.: 1660

2nd Flr.: 665

Bonus: 240 sq. ft.

Total Square Feet: 3,025 sq. ft.

Attached Garage: 2 Car, 460 sq. ft.

Bedrooms: 4

Full Bathrooms: 3

Half Bathrooms: 1

Width: 64'

Depth: 48'6"

Maximum Ridge Height: 32'

Exterior Walls: 2x4

Ceiling Height:

Other: Tray MBR

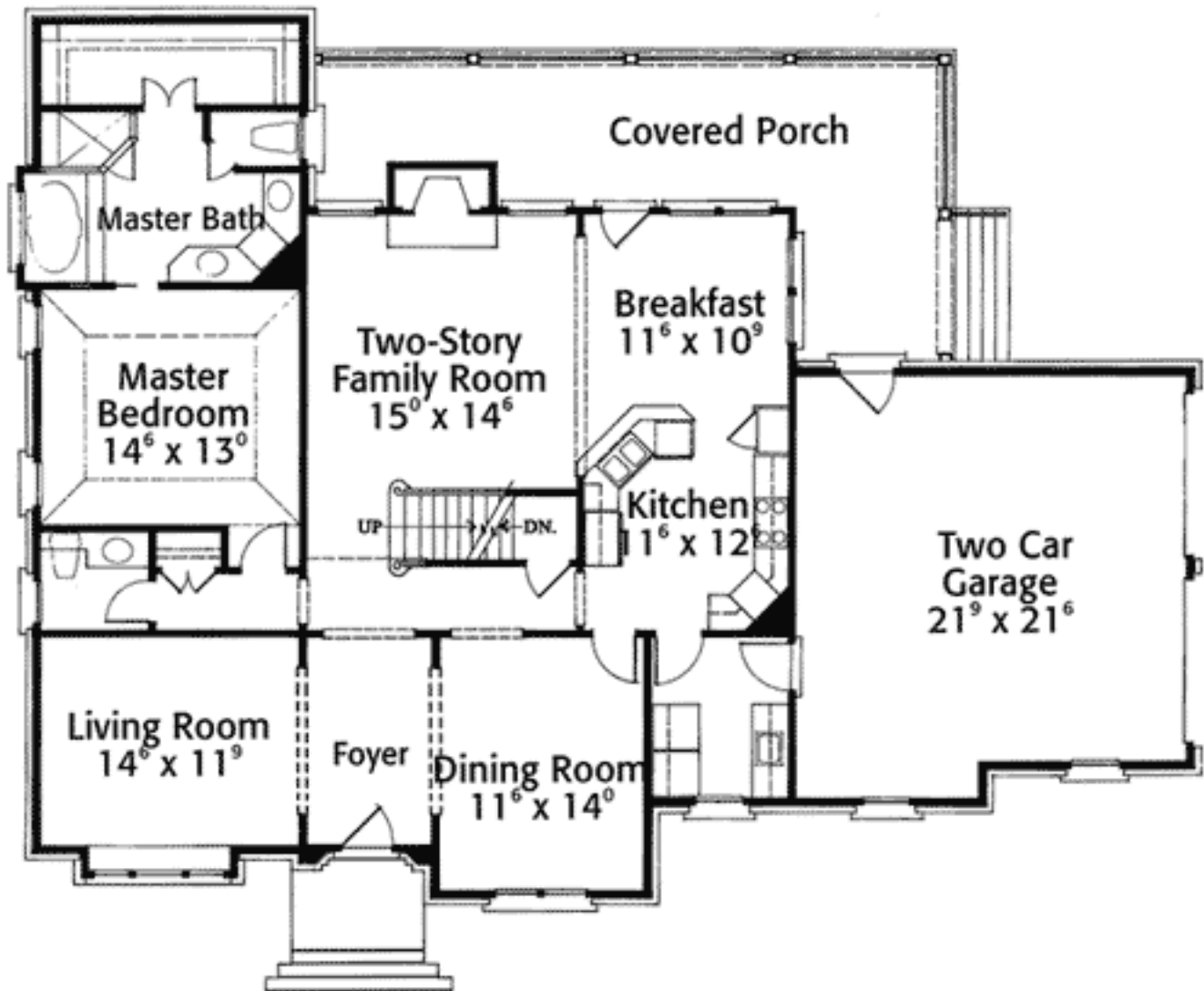
Standard Foundations: Walkout, Basement

Alternate Foundations: Slab (\$125), Crawl (\$125)

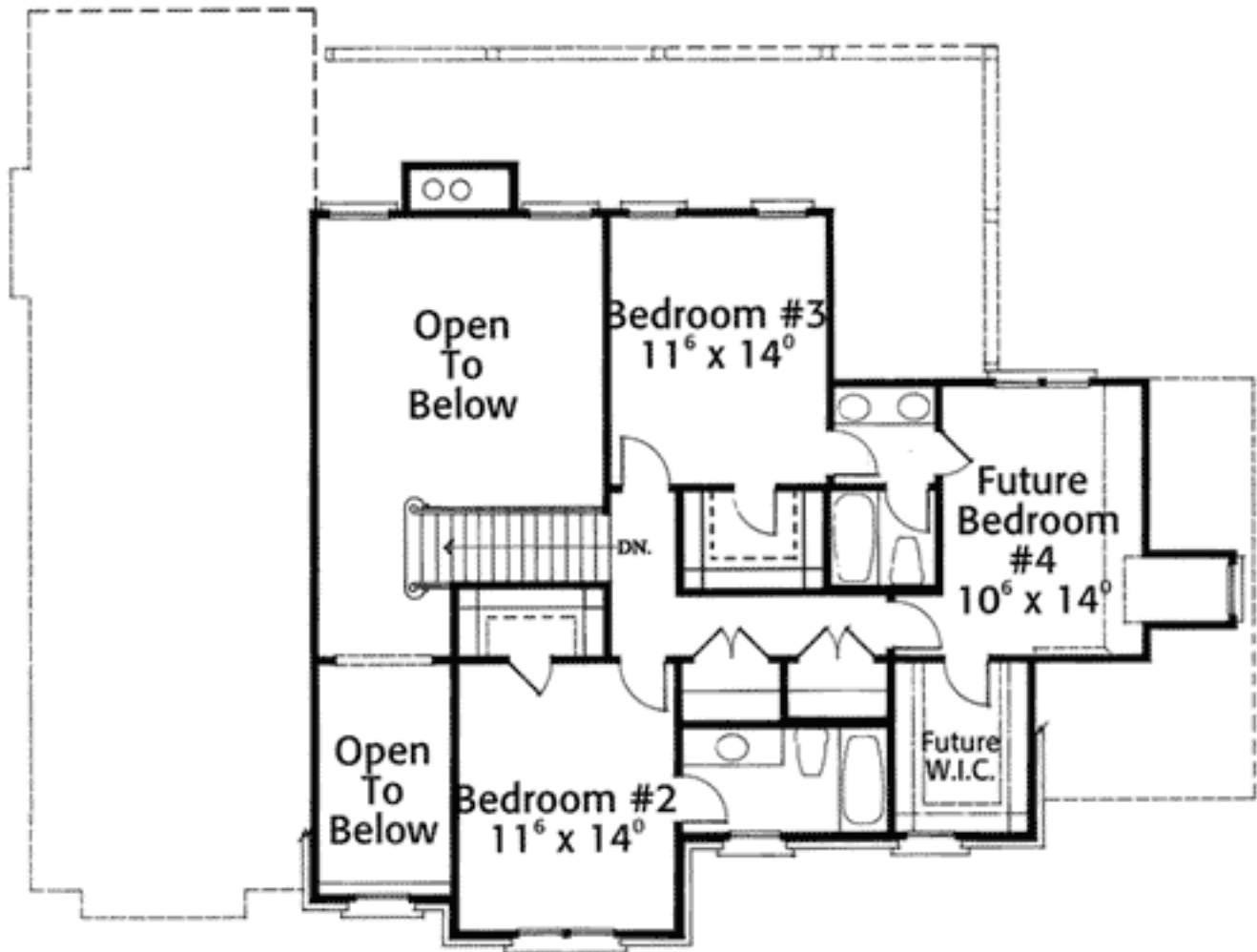
Special Features: Jack & Jill Bath, Butler Walk-in Pantry, Bonus Room, Photo Gallery, Sloping Lot, 1st Floor Master Suite

| | | | |
|---------|-----------|------------|--------------|
| One Set | Five Sets | Eight Sets | Reproducible |
| \$800 | \$900 | \$1,000 | \$1,250 |

Main Level



2nd Level



Elevation #2



Rear View

