

# Architectural Designs ...selling quality house plans for over 30 years.

Plan W9801SW: Designed to Capture Views



House plans are Copyright © 2009 by our architects and designers.

- An economical footprint is further enhanced with an expansive 10' deep partially covered sundeck, promoting a multitude of outdoor activities and capturing the rear view.
- Window seats in the sitting / dining areas are warmed by the wood stove and encourages cozy indoor moments.
- The U-shaped kitchen is brightened with a greenhouse window, perfect for plant enthusiasts.
- The second story art studio boasts a voluminous 13' high sloped ceiling, open to the sitting room below and the outdoors via a covered balcony.
- Related Plans: Need a larger home? See house plan 9812SW.
- Also see these related house plans: 9805SW, 9807SW, 9808SW and 9810SW.

Style: Canadian, Cottage, Country, Mountain, Vacation

Total Living Area: 1154

Main Flr.: 672

2nd Flr.: 482

Porch, Combined: 240 sq. ft.

Deck: 96 sq. ft.

Total Square Feet: 1,490 sq. ft.

Bedrooms: 2

Full Bathrooms: 2

Width: 30'

Depth: 42'6"

Maximum Ridge Height: 30'

Exterior Walls: 2x6

Ceiling Height:

Main Floor: 8'

2nd Floor: 10'

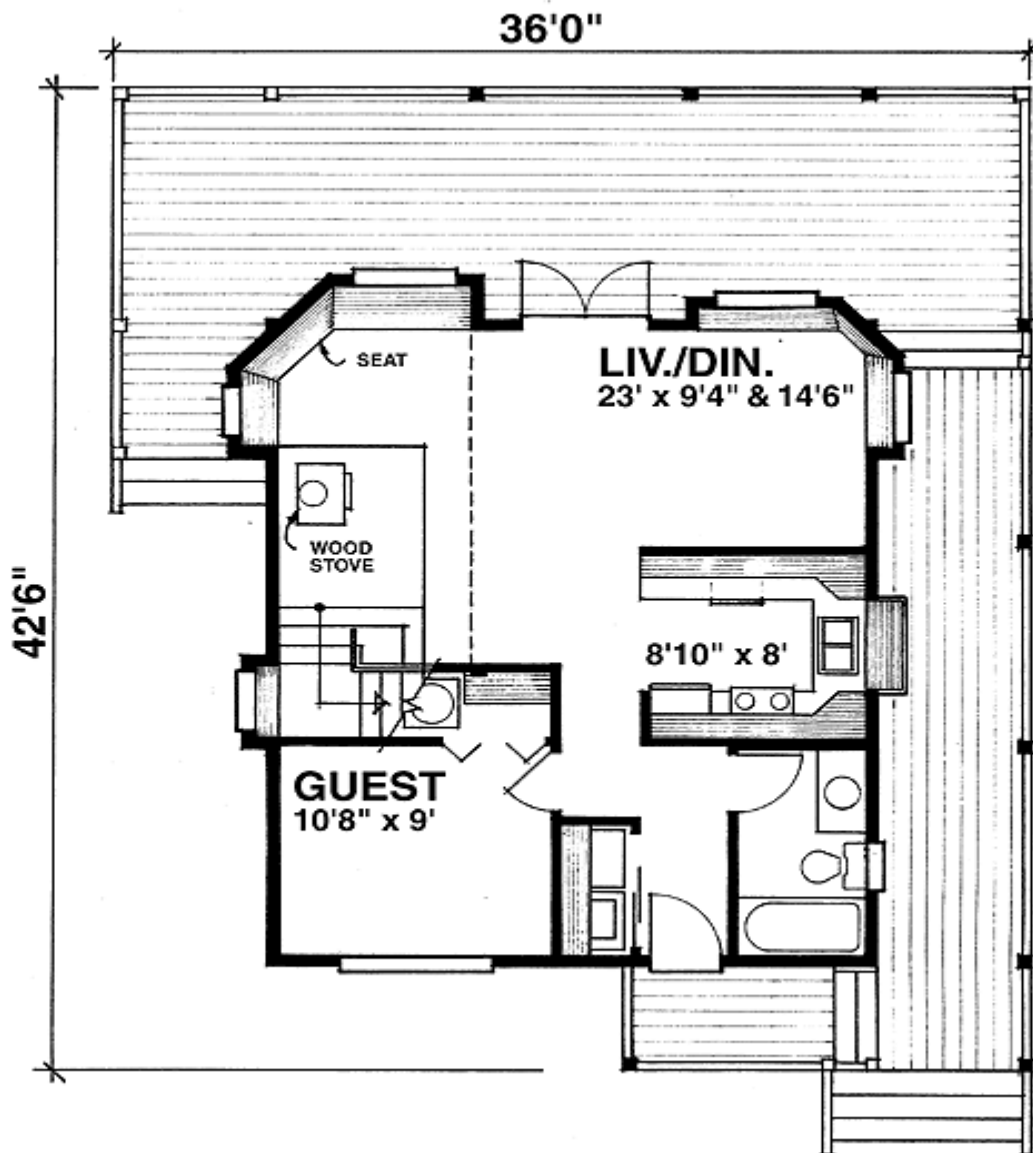
Other: 13' 2nd floor studio

Standard Foundations: Crawl

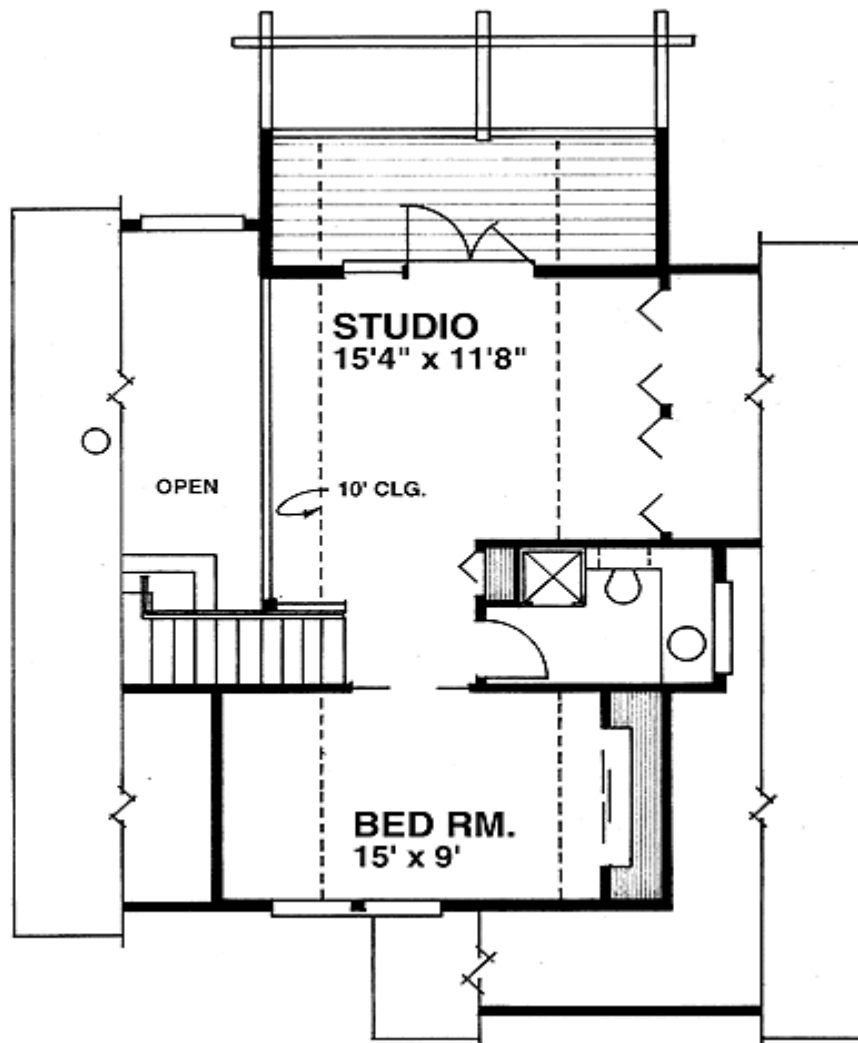
Special Features: Photo Gallery, PDF, Narrow Lot, Loft, Wrap Around Porch, Sloping Lot

One Set	Five Sets	Eight Sets	Reproducible	PDF File	CAD
\$395	\$460	\$505	\$605	\$605	\$805

## Main Level



2nd Level



Photo



Photo #2



Elevation #2



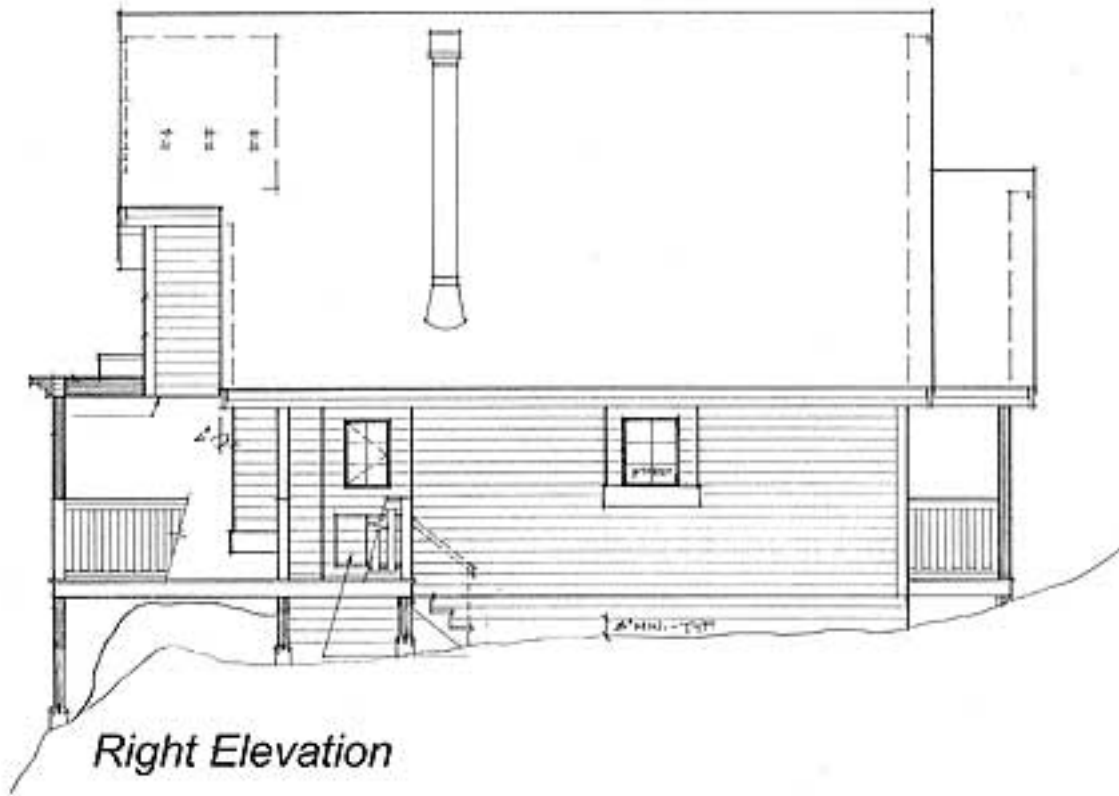
**Front elevation**

Left Side



*Left Elevation*

Right Side



*Right Elevation*

Rear View



*Rear Elevation*

# Architectural Designs ...selling quality house plans for over 30 years.

Loft

