

Architectural Designs ...selling quality house plans for over 30 years.

Plan W12086JL: Home Theater Seats Twelve



House plans are Copyright © 2009 by our architects and designers.

- An impressive turret entry capped by a copper rotunda only begins to make the statement that this is a house of real substance and style: The stone and brick exterior lend an old world style to this impressive French country estate.
- This home is traditional but yet distinctive with its multi-textured exterior and memorably elegant interior highlighted by a circular staircase.
- Despite its grand nature, this house plan is a very efficient and easy living floor plan that includes the economical additional space of a finished terrace level.
- Related Plans: Need less space? See house plan 12014JL. Also see this related house plan: 12219JL.

Style: European, Luxury

Total Living Area: 6615

Main Flr.: 3456

2nd Flr.: 3159

Total Square Feet: 7,288 sq. ft.

Attached Garage: 3 Car, 673 sq. ft.

Bedrooms: 5

Full Bathrooms: 4

Width: 102'

Depth: 80'

Exterior Walls: 2x4

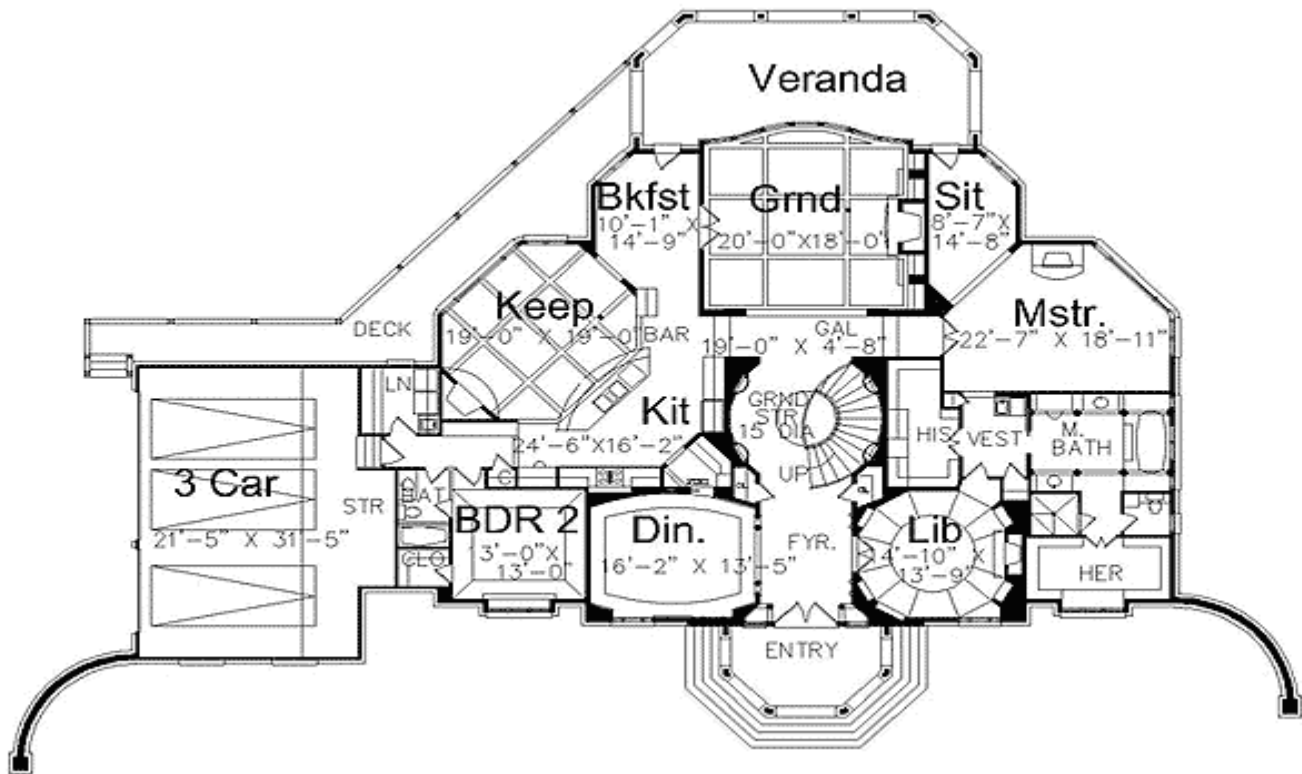
Ceiling Height:

Standard Foundations: Slab

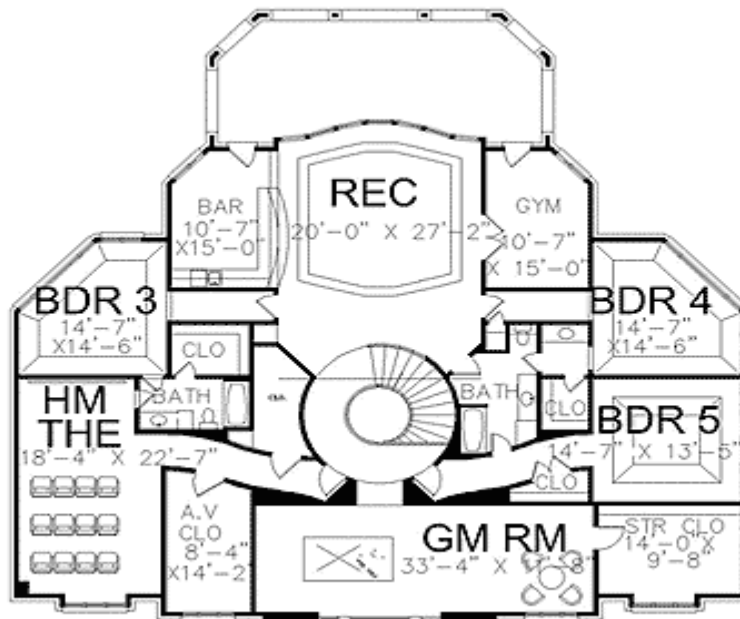
Special Features: CAD Available, PDF

One Set	Five Sets	Reproducible	PDF File	CAD
\$1,785	\$2,616	\$2,860	\$2,860	\$4,290

Main Level



2nd Level



Rear View

