

Architectural Designs ...selling quality house plans for over 30 years.

Plan W4209MJ: Classical Styling



House plans are Copyright © 2009 by our architects and designers.

- Find yourself at home among classical styling with this two-story Mediterranean design.
- This house plan boasts a gathering room open to the kitchen and large enough for entertaining guests.
- A den of the foyer provides is perfect for relaxing with a book.
- Find tranquility in an oversized master bedroom accompanied by an elegant master bath retreat complete with jacuzzi tub, dual-headed shower and his and her vanities.
- Upstairs, you'll find three additional bedrooms and convenient laundry facilities.
- This house plan comes with plans for a two-car detached garage.

Style: Florida, Mediterranean, Spanish

Total Living Area: 2634

Main Flr.: 1253

2nd Flr.: 1381

Covered Patio: 218 sq. ft.

Entry: 155 sq. ft.

Total Square Feet: 3,407 sq. ft.

Detached Garage: 2 Car, 400 sq. ft.

Bedrooms: 4

Full Bathrooms: 2

Half Bathrooms: 1

Width: 31'4"

Depth: 64'

Maximum Ridge Height: 28'11"

Exterior Walls: Block

Ceiling Height:

Standard Foundations: Slab

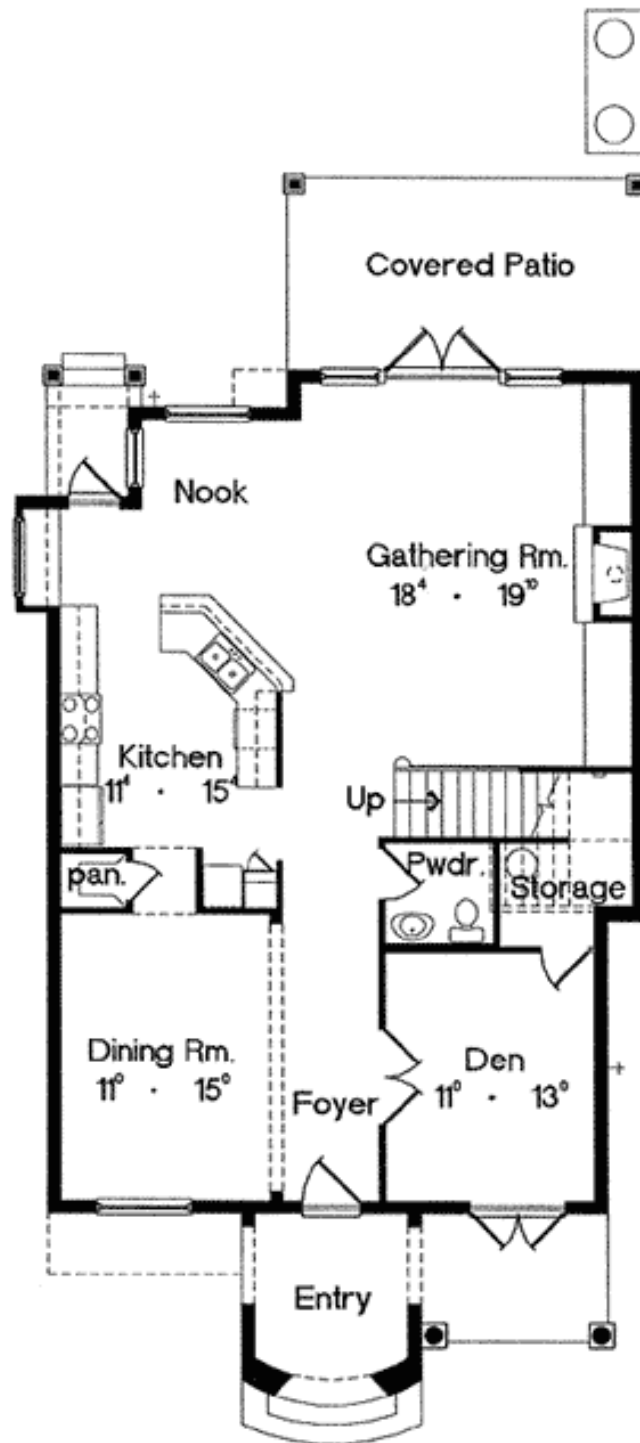
Special Features: Narrow Lot, CAD Available, Den-Office-Library-Study

Five Sets
\$850

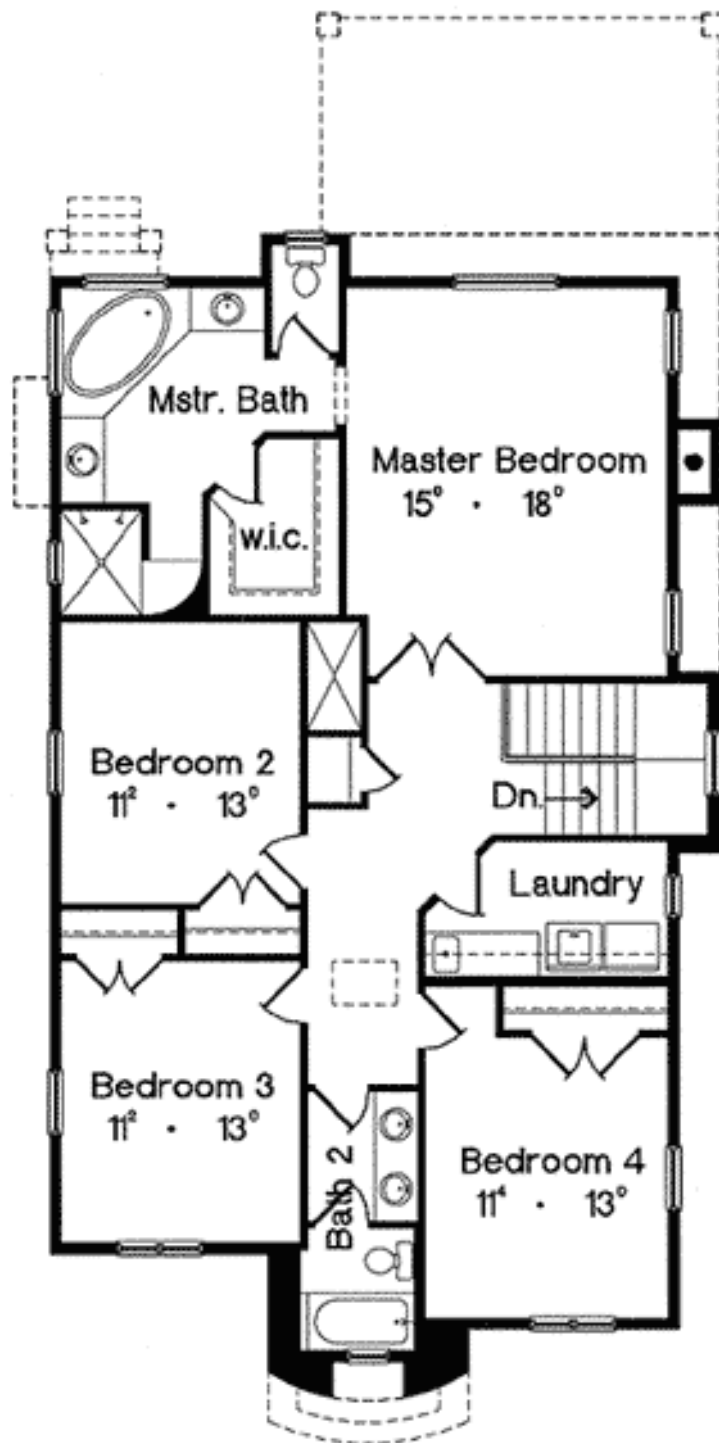
Reproducible
\$1,150

CAD
\$2,350

Main Level

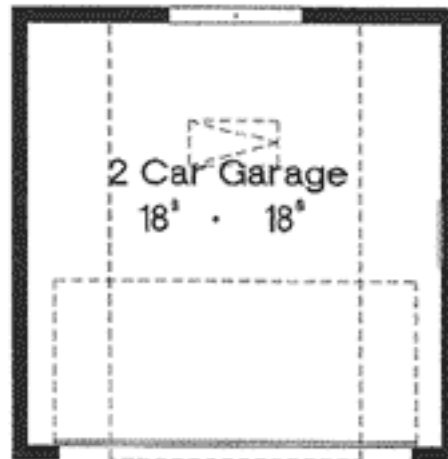


2nd Level



Other

Detached garage plan



Architectural Designs ...selling quality house plans for over 30 years.

Photo



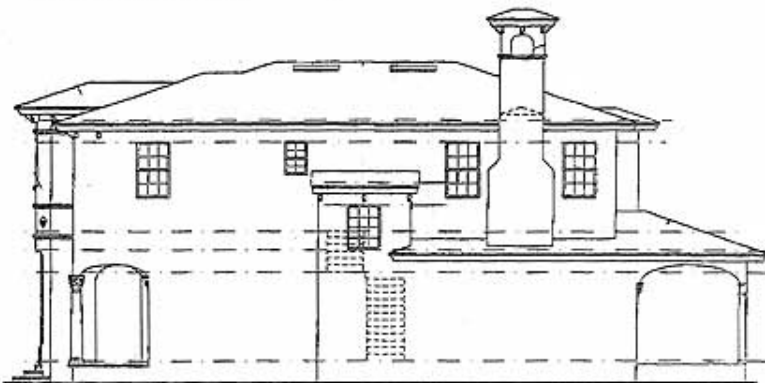
Sides/Rear



Rear elevation



Left elevation



Right elevation