

Architectural Designs ...selling quality house plans for over 30 years.

Plan W3000D: Special Wrap-Around Porch



House plans are Copyright © 2009 by our architects and designers.

- A covered porch wraps entirely around this country home plan, providing effortless outdoor extension of indoor activities. Two oversized dormers and a substantial stone chimney add character.
- The entry leads into the two-story living room with its fireplace and bay window. The open plan at the living and dining rooms and the kitchen add further appeal.
- A peninsula eating bar separates the living room from the U-shaped kitchen. The adjacent dining room includes a second entrance to the porch.
- In the first-floor master suite, the bay window in the bedroom is the twin of the one in the living room. The compartmented master bath includes twin sinks, separate shower, tub and a walk-in closet.
- Upstairs, a loft overlooks the living room on one side and the dining room on the other. A second full bath and two bedrooms, one with a walk-in closet, complete this floor.
- Added Bonus: This house plan comes with plans for a detached two-car garage.
- Related Plan: For a version with three dormers see house plan 3027D.

Style: Cottage, Country, Farmhouse, Southern

Total Living Area: 1846

Main Flr.: 1156

2nd Flr.: 690

Basement Unfinished: 1,156 sq. ft.

Porch, Combined: 1,400 sq. ft.

Total Square Feet: 4,402 sq. ft.

Bedrooms: 3

Full Bathrooms: 2

Half Bathrooms: 1

Width: 57'

Depth: 45'

Maximum Ridge Height: 25'

Exterior Walls: 2x4

Ceiling Height:

Main Floor: 8'

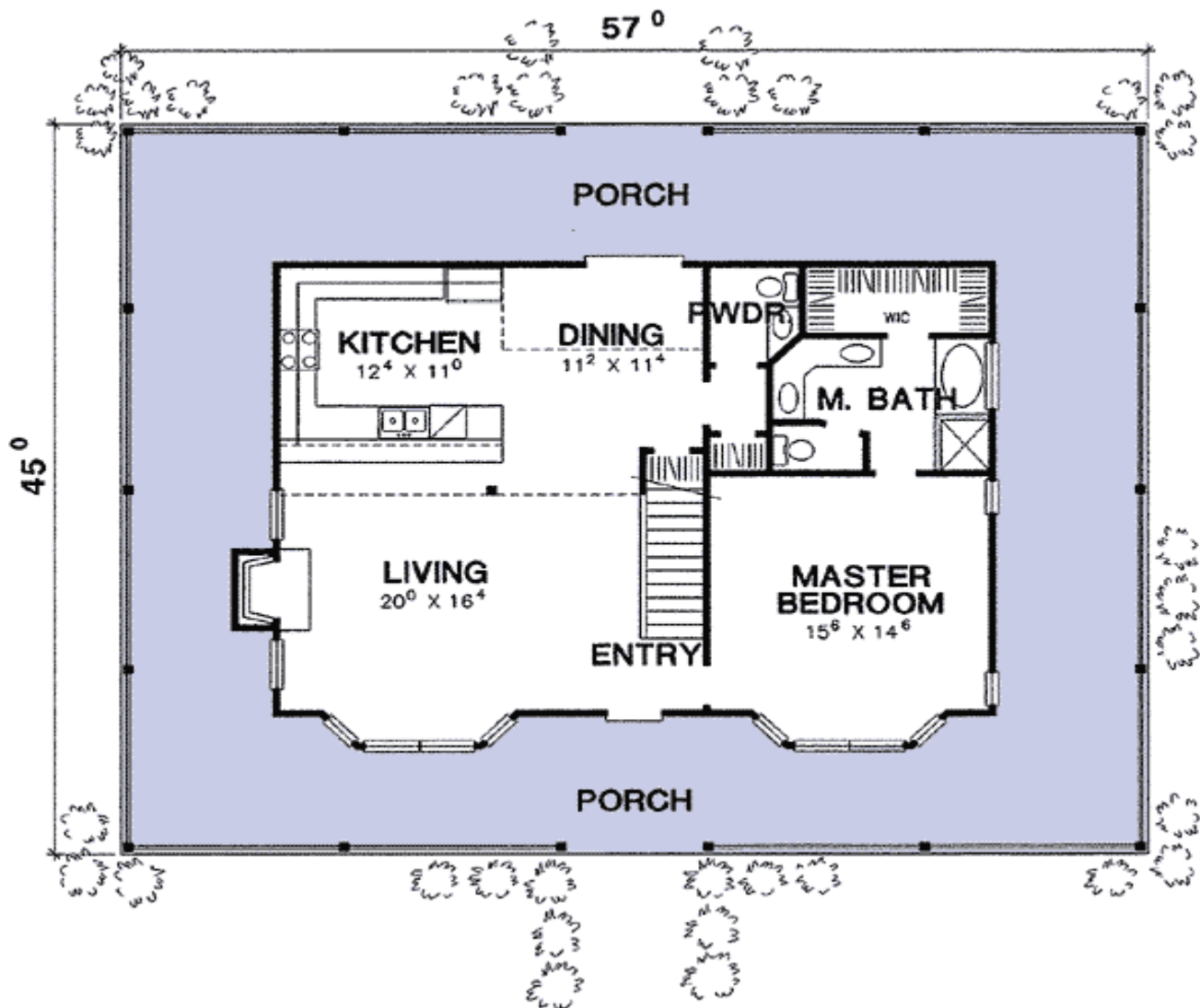
2nd Floor: 8'-4'6"

Standard Foundations: Slab, Basement, Crawl

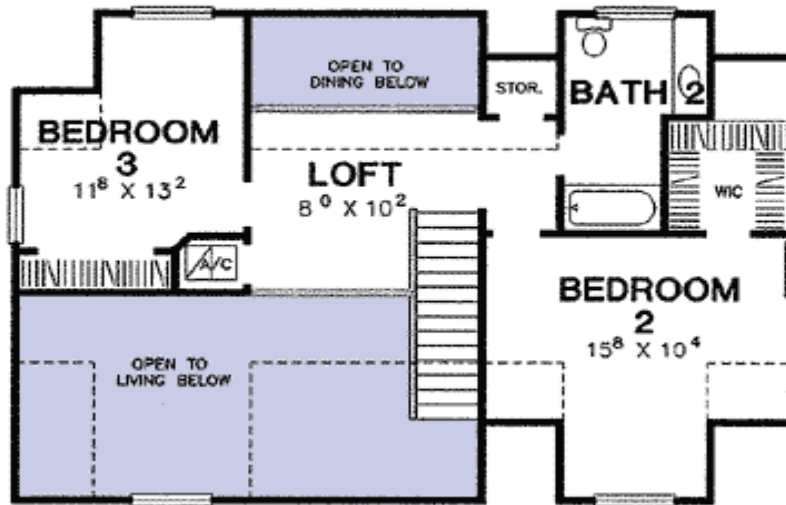
Special Features: Loft, Photo Gallery, 1st Floor Master Suite, CAD Available, Wrap Around Porch

One Set	Five Sets	Eight Sets	Reproducible	CAD
\$510	\$565	\$620	\$795	\$1,765

Main Level

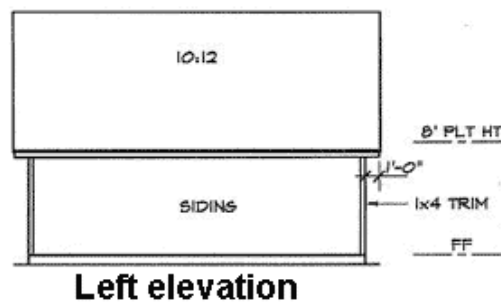
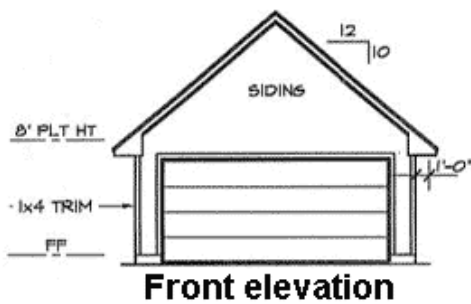
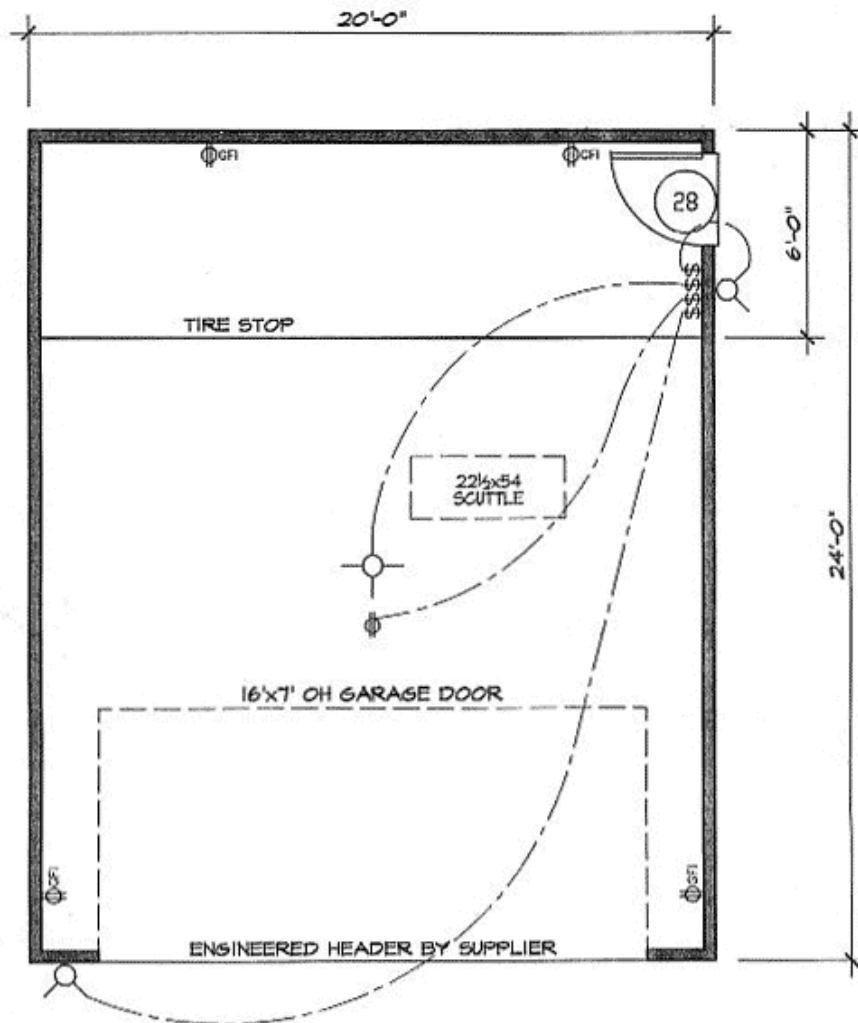


2nd Level



Other

Detached garage plan



Architectural Designs ...selling quality house plans for over 30 years.

Photo



Photo #2



Elevation #2



Rear View

