

Architectural Designs ...selling quality house plans for over 30 years.

Plan W35017GH



House plans are Copyright © 2009 by our architects and designers.

Style: Log, Metric, Mountain

Total Living Area: 3670

Main Flr.: 1420

2nd Flr.: 976

Lower Level: 1274

Total Square Feet: 5,110 sq. ft.

Attached Garage: 3 Car, 1,440 sq. ft.

Bedrooms: 6

Full Bathrooms: 4

Half Bathrooms: 1

Width: 82'6"

Depth: 54'6"

Maximum Ridge Height: 30'5"

Exterior Walls: Log

Ceiling Height:

Main Floor: 9'

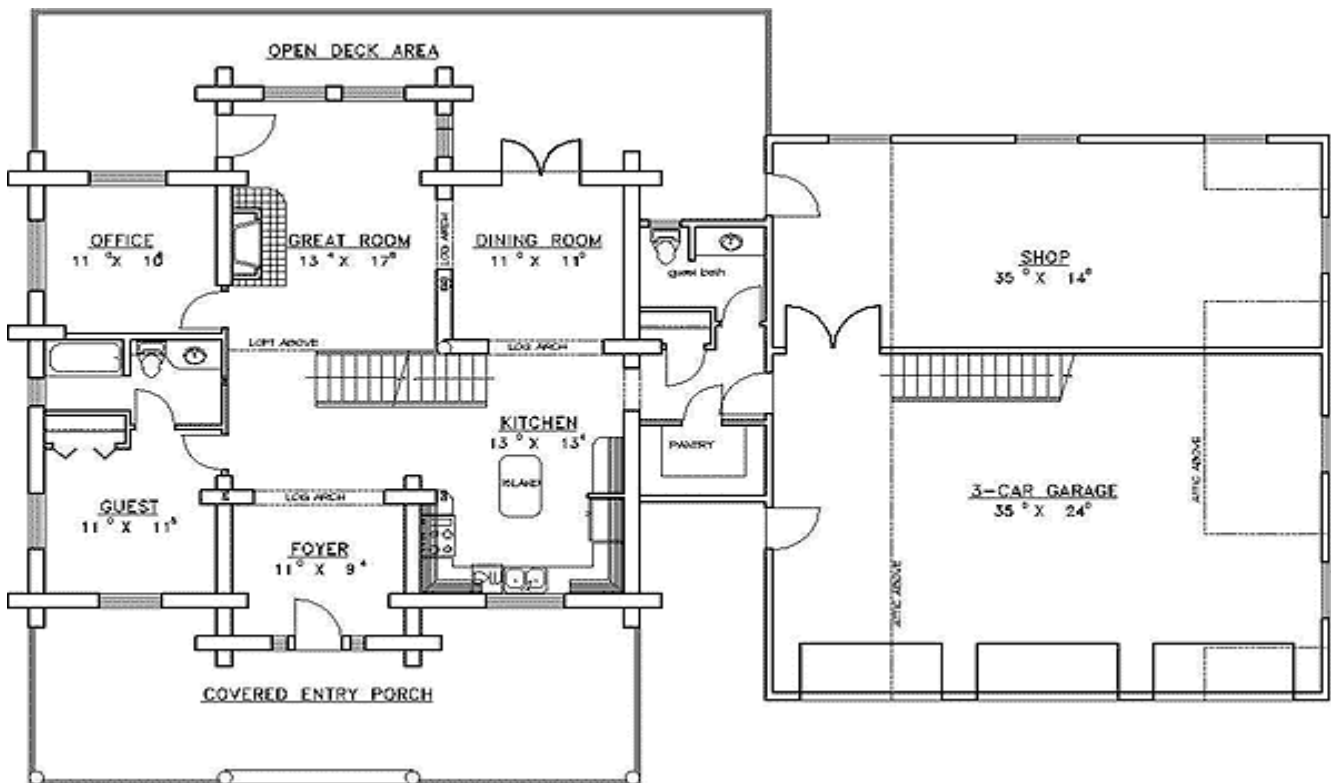
2nd Floor: 9'

Standard Foundations: Daylight

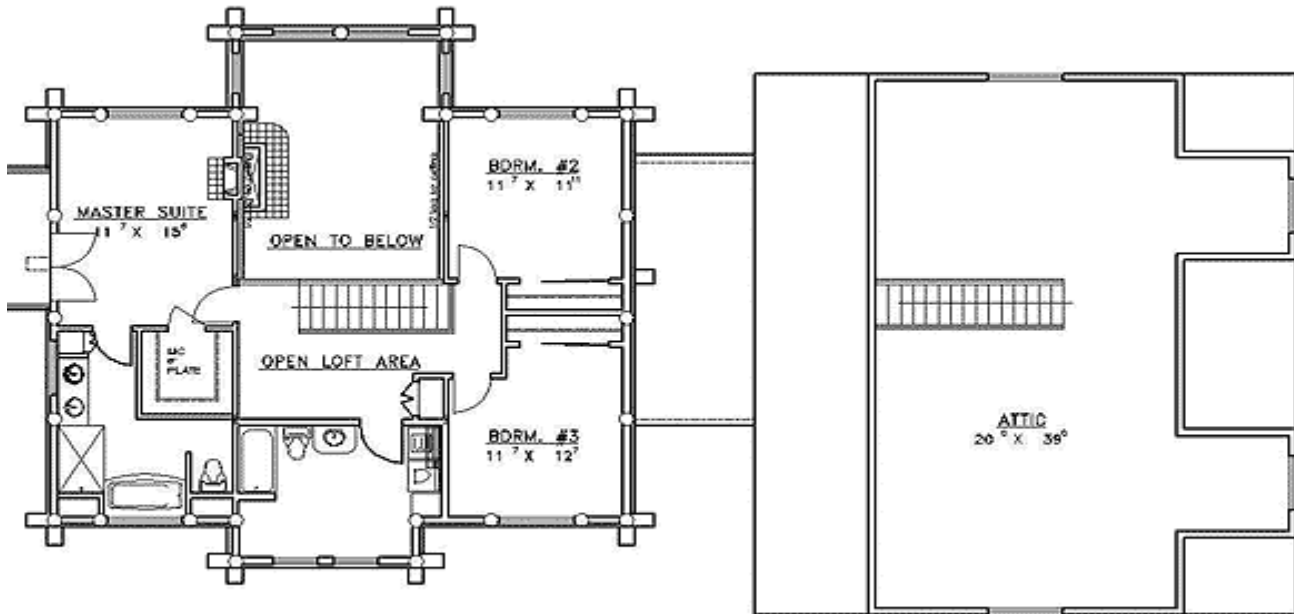
Special Features: Sloping Lot, CAD Available, PDF, Butler Walk-in Pantry, Den-Office-Library-Study, Loft

Five Sets	Eight Sets	Reproducible	PDF File	CAD
\$825	\$930	\$850	\$950	\$950

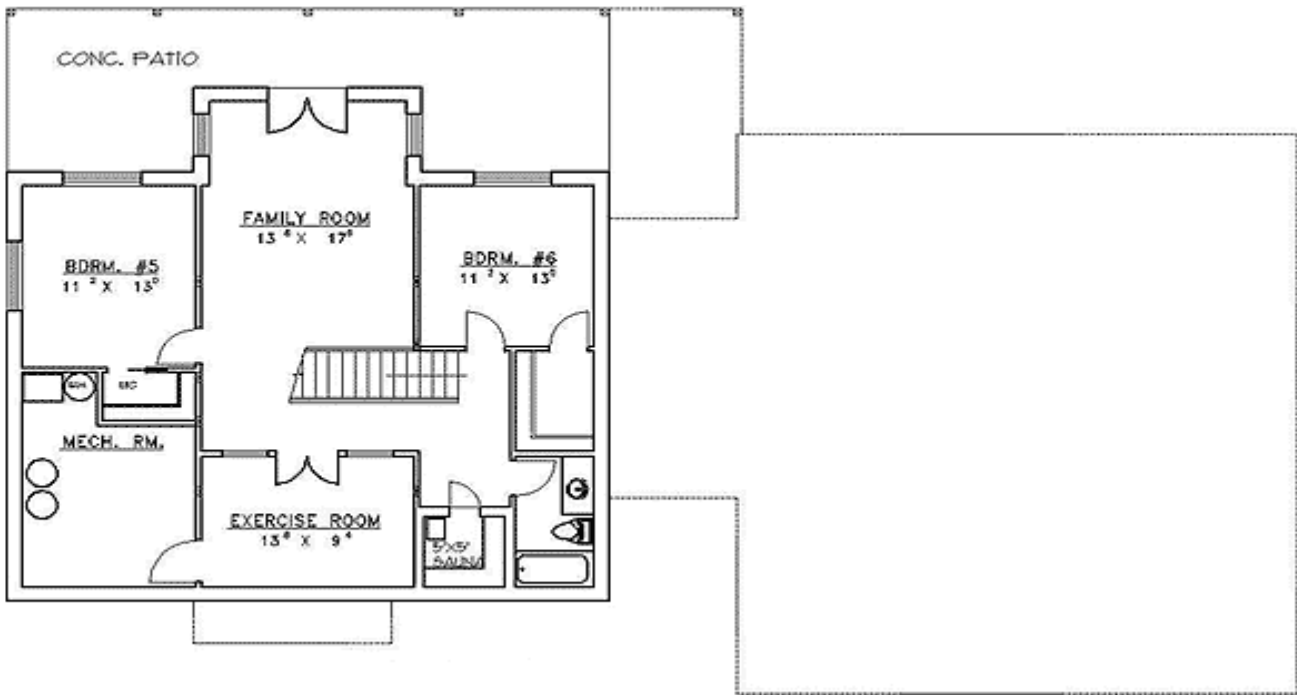
Main Level



2nd Level



Lower Level



Left Side

