

## Plan W69013AM: Open Cottage Home Plan



House plans are Copyright © 2009 by our architects and designers.

- Arches accented with keystones, a mix of siding materials, a trio of roof peaks, and a covered porch stamp this home with time-honored appeal.
- Supremely efficient and comfortable, the floor plan links the kitchen, dining area, and living room. The open plan works well for day-to-day family life and also for entertaining. The kitchen features an island and built-in pantry. Those who love to barbecue will appreciate the nearby patio, accessible through the sliding patio doors in the dining area. The living room is defined by a series of columns and the vaulted ceiling. It features a fireplace.
- In the left wing of the home, the master suite, two additional bedrooms, a bath, and the laundry room are aligned along a central hall.
- Related Plans: For alternate elevations, see house plans 69250AM (front-entry garage) and 69251AM (side-entry garage).

Style: Cottage, Northwest

Total Living Area: 1275

Main Flr.: 1275

Total Square Feet: 1,694 sq. ft.

Attached Garage: 2 Car, 419 sq. ft.

Bedrooms: 3

Full Bathrooms: 2

Width: 40'

Depth: 60'

Maximum Ridge Height: 26'

Exterior Walls: 2x6

Ceiling Height:

Main Floor: 9'

Other: Vaulted Living & MBR

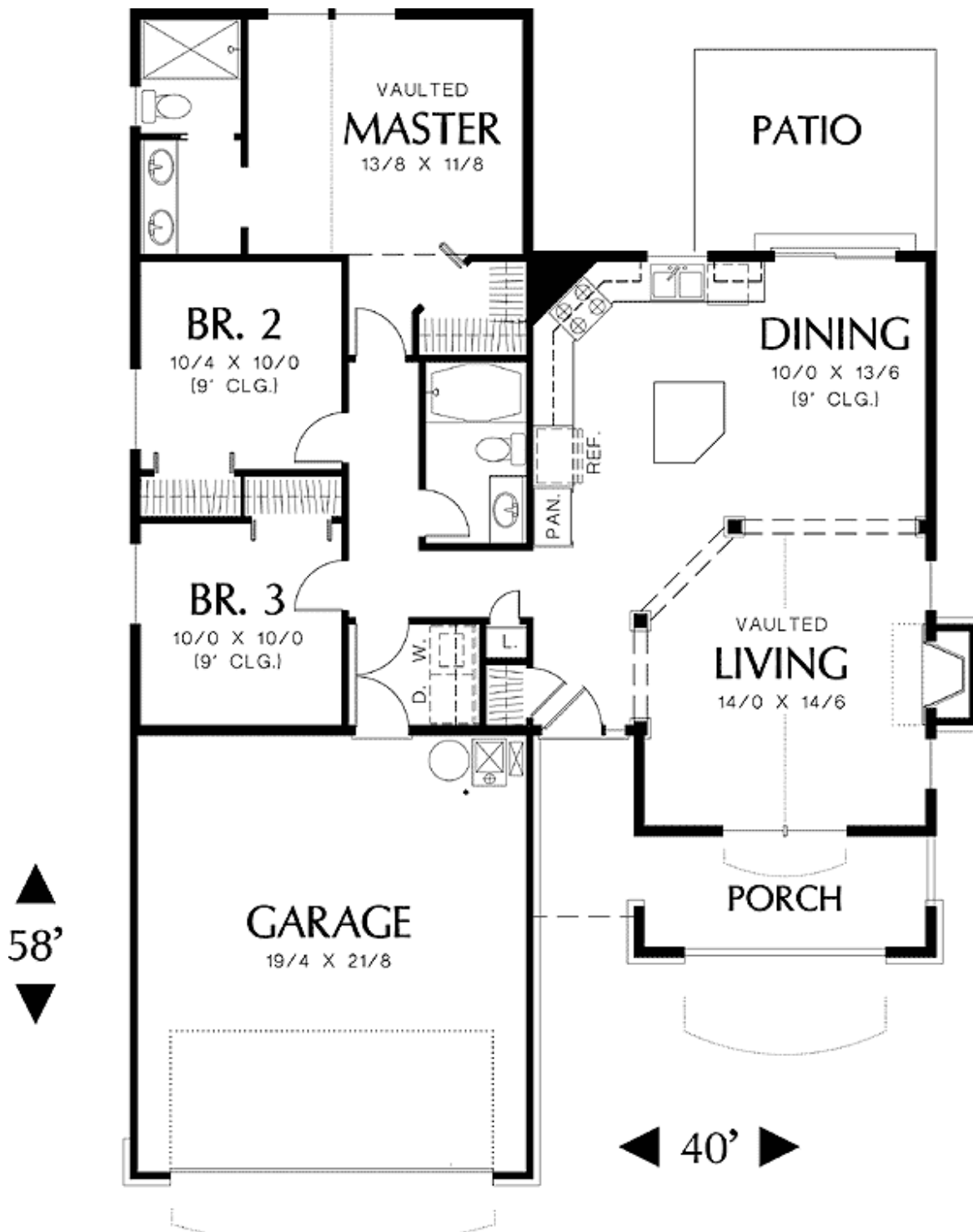
Standard Foundations: Crawl

Alternate Foundations: Slab (\$80), Basement (\$195)

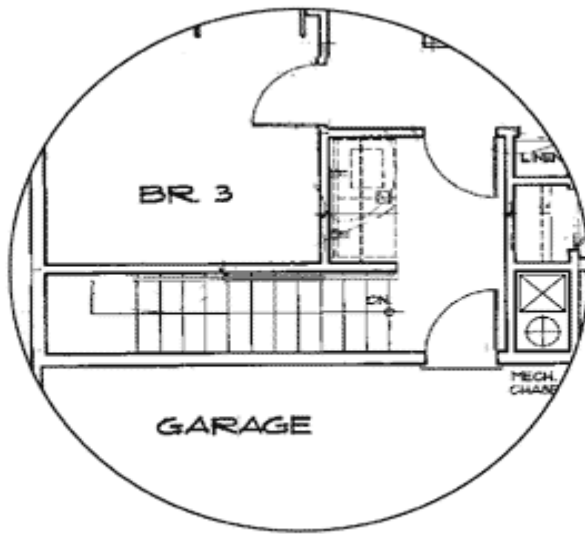
Special Features: CAD Available, PDF, Narrow Lot, 1st Floor Master Suite

One Set	Five Sets	Eight Sets	Reproducible	PDF File	CAD
\$475	\$550	\$595	\$800	\$800	\$1,350

Main Level



Optional



Basement stair location

Rear View

