

Architectural Designs ...selling quality house plans for over 30 years.

Plan W59179ND: Traditional Touches



House plans are Copyright © 2009 by our architects and designers.

- In the foyer of this traditional design, round columns set off the dining room from the fireplaced great room.
- The family area comprises a kitchen featuring a walk-in pantry and a large eating island. The hearth room features a gas fireplace and a nearby computer center.
- In the bedroom wing, a sitting area expands the master bedroom, while a vaulted ceiling and a garden whirlpool tub are among the amenities in the master bath.
- Bedrooms three and four share a hall bath, while bedroom two enjoys a private bath. With an optional door to the foyer, bedroom two becomes a study.
- Upstairs, bonus space can be converted to a large playroom.
- Ceilings: 9' standard, 10' in great room, dining room and foyer.
- Foundation options: slab or crawl space. Specify when ordering.

Style: Florida, Mediterranean

Total Living Area: 1976

Main Flr.: 1976

Porch, Combined: 407 sq. ft.

Total Square Feet: 2,824 sq. ft.

Attached Garage: 2 Car, 441 sq. ft.

Bedrooms: 4

Full Bathrooms: 2

Width: 58'

Depth: 61'10"

Maximum Ridge Height: 23'4"

Exterior Walls: Block

Ceiling Height:

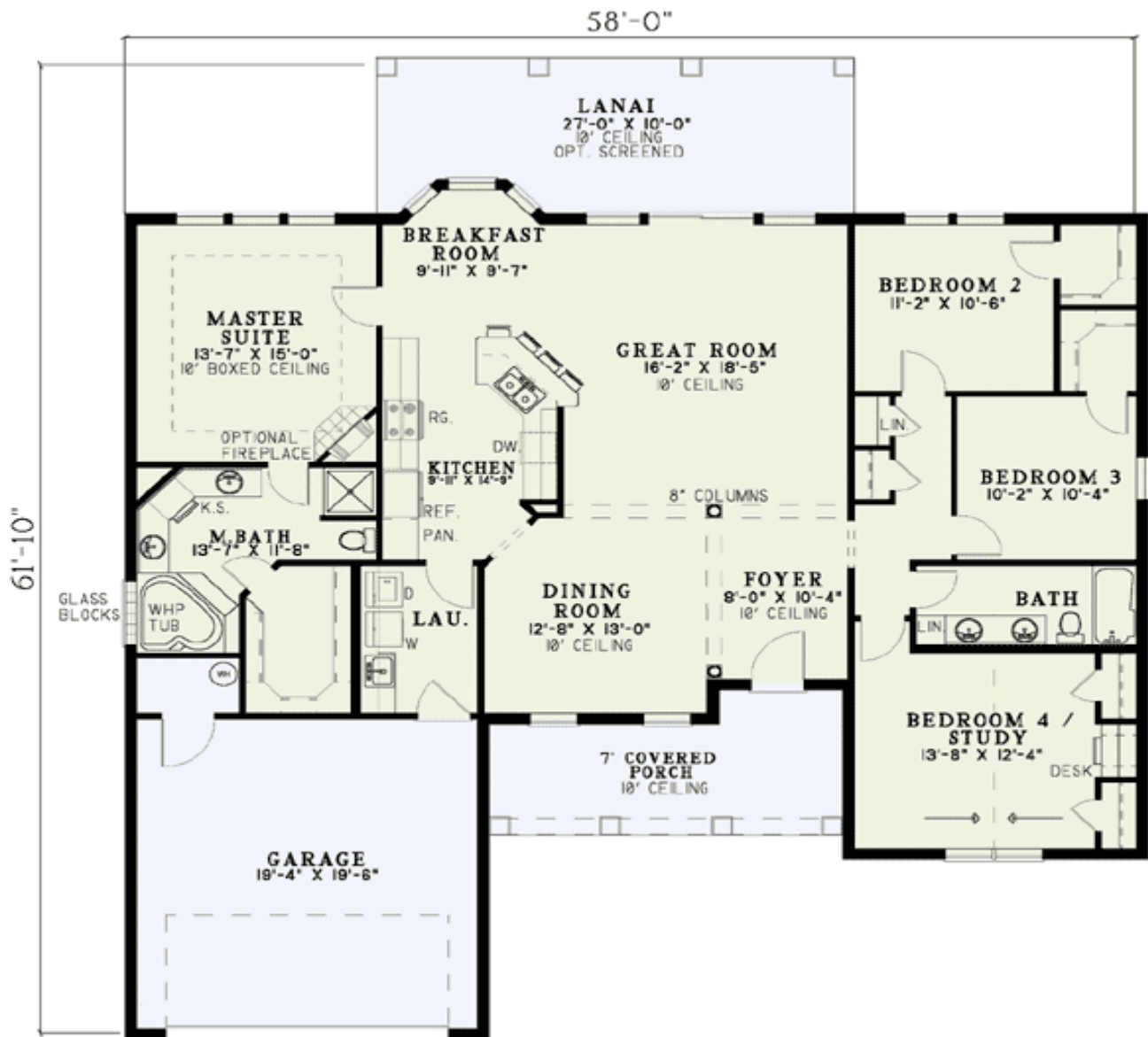
Main Floor: 9'4"

Standard Foundations: Slab

Special Features: 1st Floor Master Suite, PDF, CAD Available

One Set	Five Sets	Eight Sets	Reproducible	PDF File	CAD
\$545	\$610	\$640	\$790	\$790	\$1,350

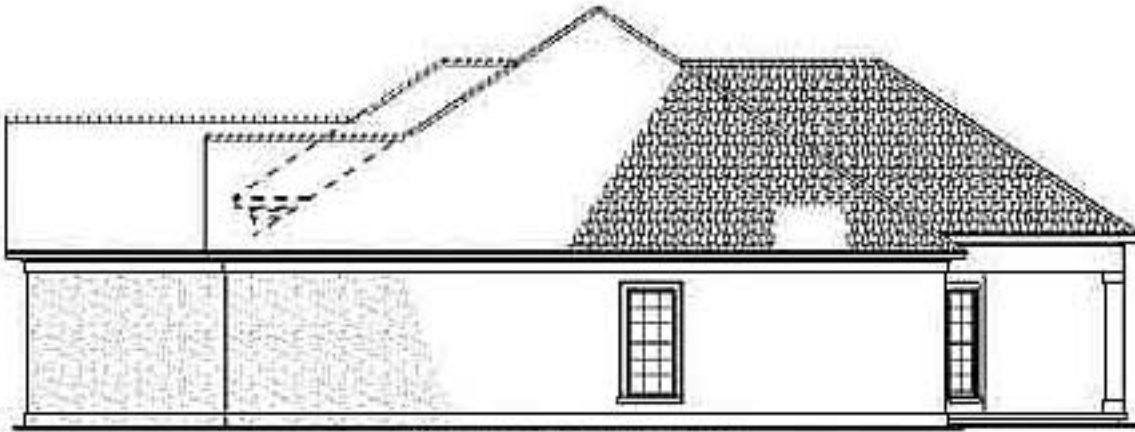
Main Level



Left Side



Right Side



Rear View

