

Architectural Designs ...selling quality house plans for over 30 years.

Plan W7408RD: Spacious Home Plan with Charming Details



House plans are Copyright © 2009 by our architects and designers.

- A covered porch with paired columns wraps around three sides of this spacious country home plan, and another porch is found off the utility area in back. The home abounds in charming details, such as four wooden columns in the foyer and a loft that looks down upon the two-story entry.
- Placed between the formal dining room and the nook is the kitchen, also open to the two-story living room with its fireplace. 10' ceilings are found elsewhere on the first floor.
- The first-floor master suite includes a deluxe bath with lots of amenities, including his and her walk-in closets and a glass shower. Located just down the hall is another bedroom that would make a perfect nursery now and a study later.
- Upstairs, two bedrooms, both with walk-in closets, share a compartmented bath with twin sinks. Completing the design is a bonus room over the side-entry garage.
- Related Plans: Need something smaller? See house plans 7424RD (2,427 sq. ft.) and 7469RD (2,043 sq. ft.).

Style: Country, Farmhouse, Southern

Total Living Area: 2656

Main Flr.: 1969

2nd Flr.: 687

Basement Unfinished: 1,969 sq. ft.

Bonus: 370 sq. ft.

Deck: 532 sq. ft.

Total Square Feet: 6,156 sq. ft.

Attached Garage: 2 Car, 629 sq. ft.

Bedrooms: 4

Full Bathrooms: 3

Width: 86'4"

Depth: 47'6"

Maximum Ridge Height: 26'4"

Exterior Walls: 2x4

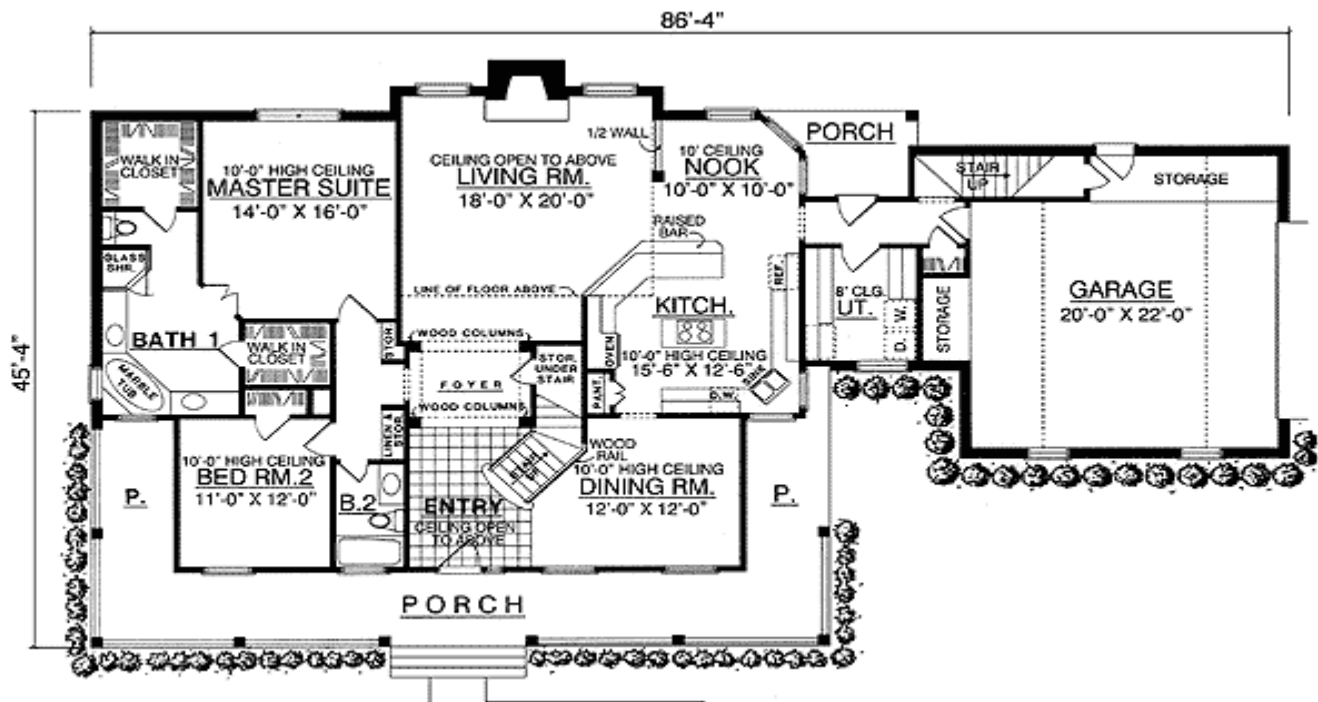
Ceiling Height:

Standard Foundations: Slab, Basement, Crawl

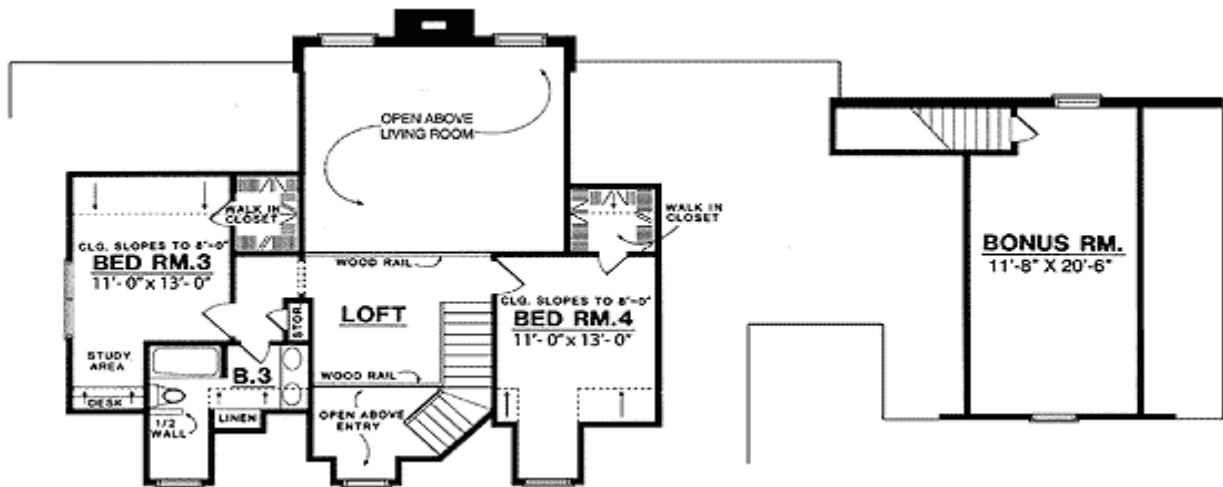
Special Features: Bonus Room, CAD Available, Wrap Around Porch, 1st Floor Master Suite

One Set	Five Sets	Eight Sets	Reproducible	CAD
\$745	\$845	\$935	\$1,020	\$1,595

Main Level



2nd Level



Rear View

