

Architectural Designs ...selling quality house plans for over 30 years.

Plan W2198DR: Classically Designed Country Home Plan



House plans are Copyright © 2009 by our architects and designers.

- The classic layout of this charming country home plan features a sloped roof and a lovely front porch, perfect for relaxing outdoors.
- The skylight in the entry hall creates an open and airy entrance into the home.
- Two sets of French doors from the entry hall into both the living room and formal dining room provide a touch of traditional elegance.
- The generous kitchen features a center island with breakfast bar, double sinks and plenty of natural light. A half-bath and laundry facilities complete the first floor plan.
- The master suite with its large walk-in closet and private bath is located upstairs. The two secondary bedrooms, which can easily convert to a guest room or a study/office, share a shower room.
- A full basement provides additional storage and considerable room for future expansion.
- Need a garage? See house plan 21002DR.

Style: Canadian, Country, Metric

Total Living Area: 1458

Main Flr.: 768

2nd Flr.: 690

Basement Unfinished: 768 sq. ft.

Front Porch: 100 sq. ft.

Deck: 80 sq. ft.

Total Square Feet: 2,406 sq. ft.

Bedrooms: 3

Full Bathrooms: 2

Half Bathrooms: 1

Width: 32'

Depth: 24'

Maximum Ridge Height: 25'3"

Exterior Walls: 2x6

Ceiling Height:

Main Floor: 8'

2nd Floor: 8'

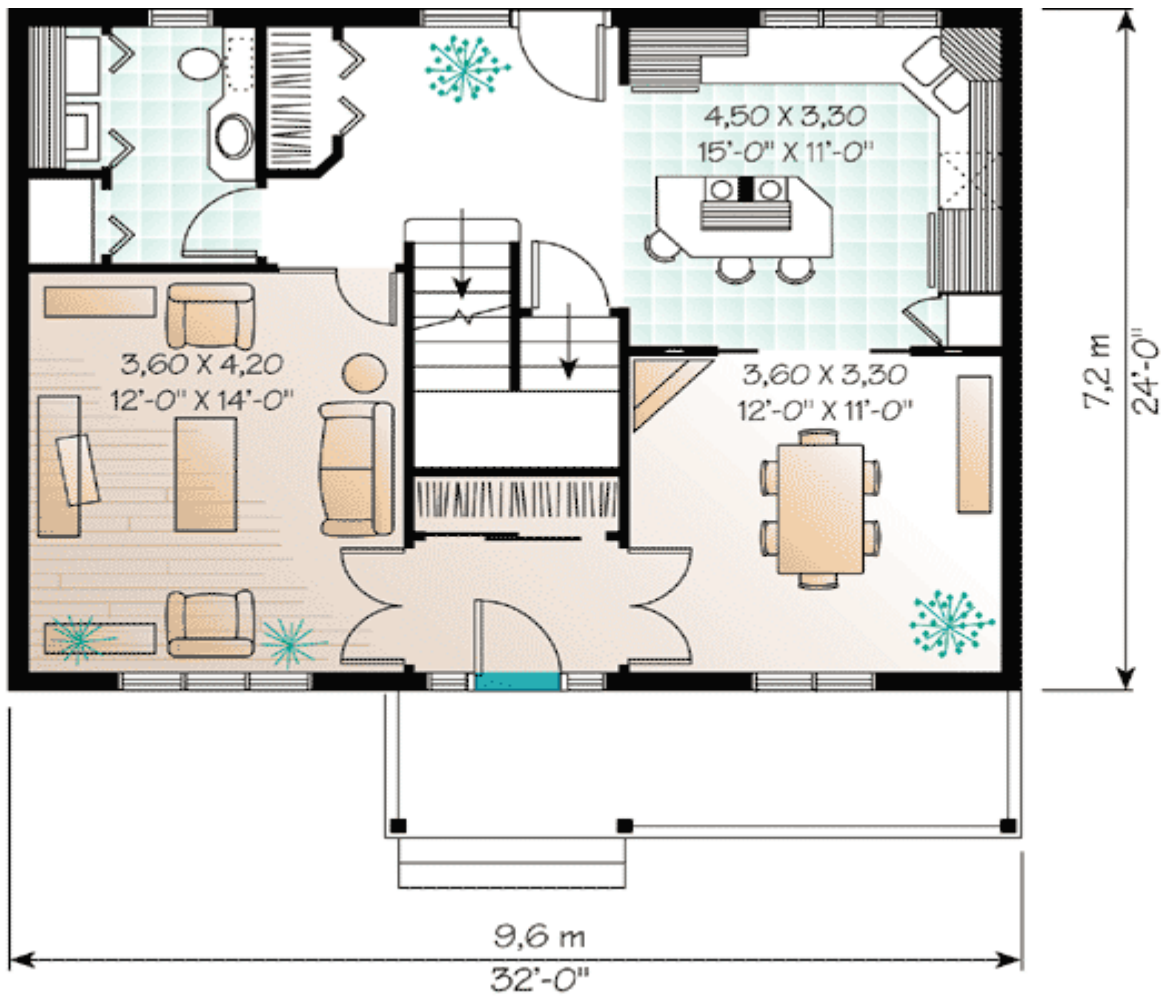
Standard Foundations: Basement

Alternate Foundations: Slab (\$295), Crawl (\$295)

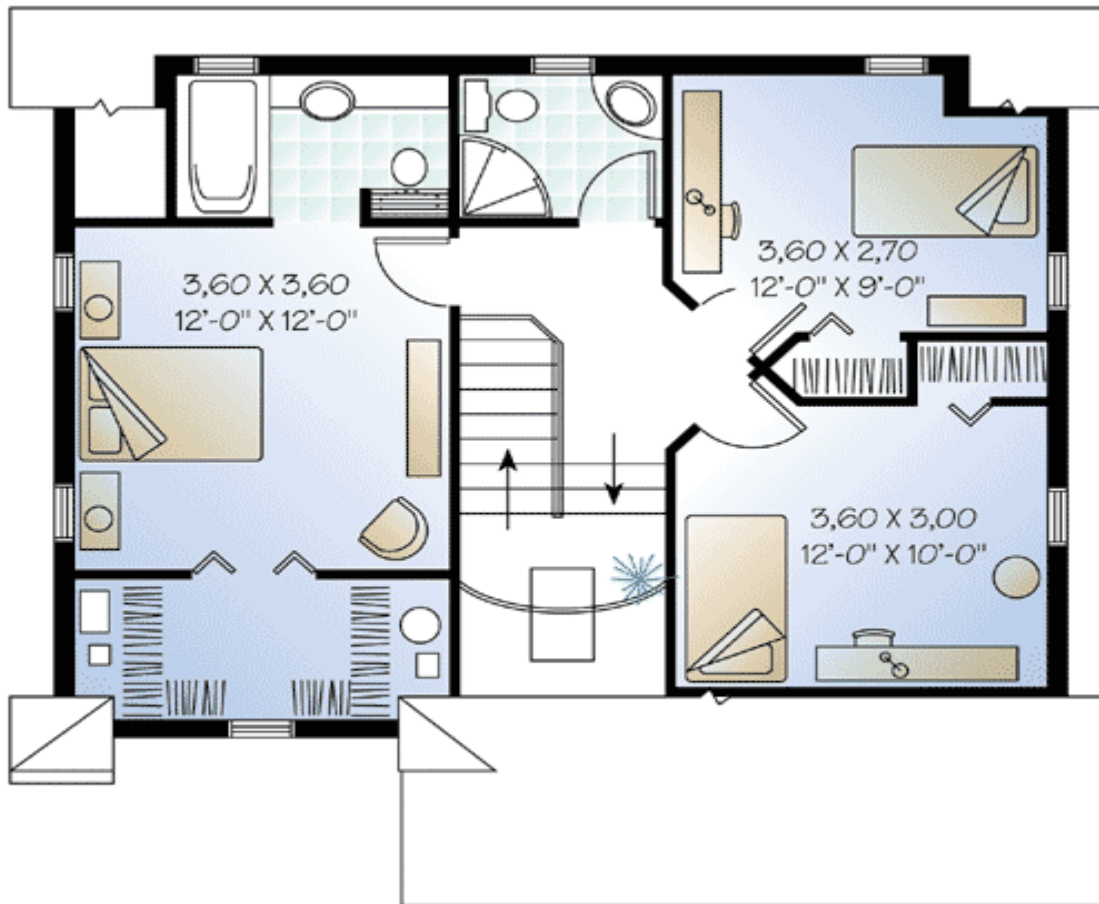
Special Features: Narrow Lot, PDF, CAD Available

One Set	Five Sets	Eight Sets	Reproducible	PDF File	CAD
\$549	\$589	\$619	\$799	\$799	\$1,490

Main Level



2nd Level



Rear View

