

# Architectural Designs ...selling quality house plans for over 30 years.

Plan W21486DR: Attractive Duplex with Covered Entry



House plans are Copyright © 2009 by our architects and designers.

- A covered entry welcomes you to both units of the attractive duplex house plan.
- Both units feature an original kitchen with bar-style dinette seating.
- There are abundant windows at the rear in both the dining and family rooms.
- Upstairs you'll find three bedrooms. The master features a walk-in closet and dual vanities.

Style: Canadian, Metric, Multi-Family

Total Living Area: 3188

Main Flr.: 679

2nd Flr.: 915

Total Square Feet: 3,188 sq. ft.

Attached Garage: 1 Car, 264 sq. ft.

Bedrooms: 3

Full Bathrooms: 1

Half Bathrooms: 1

Width: 44'

Depth: 48'

Maximum Ridge Height: 34'2"

Exterior Walls: 2x6

Ceiling Height:

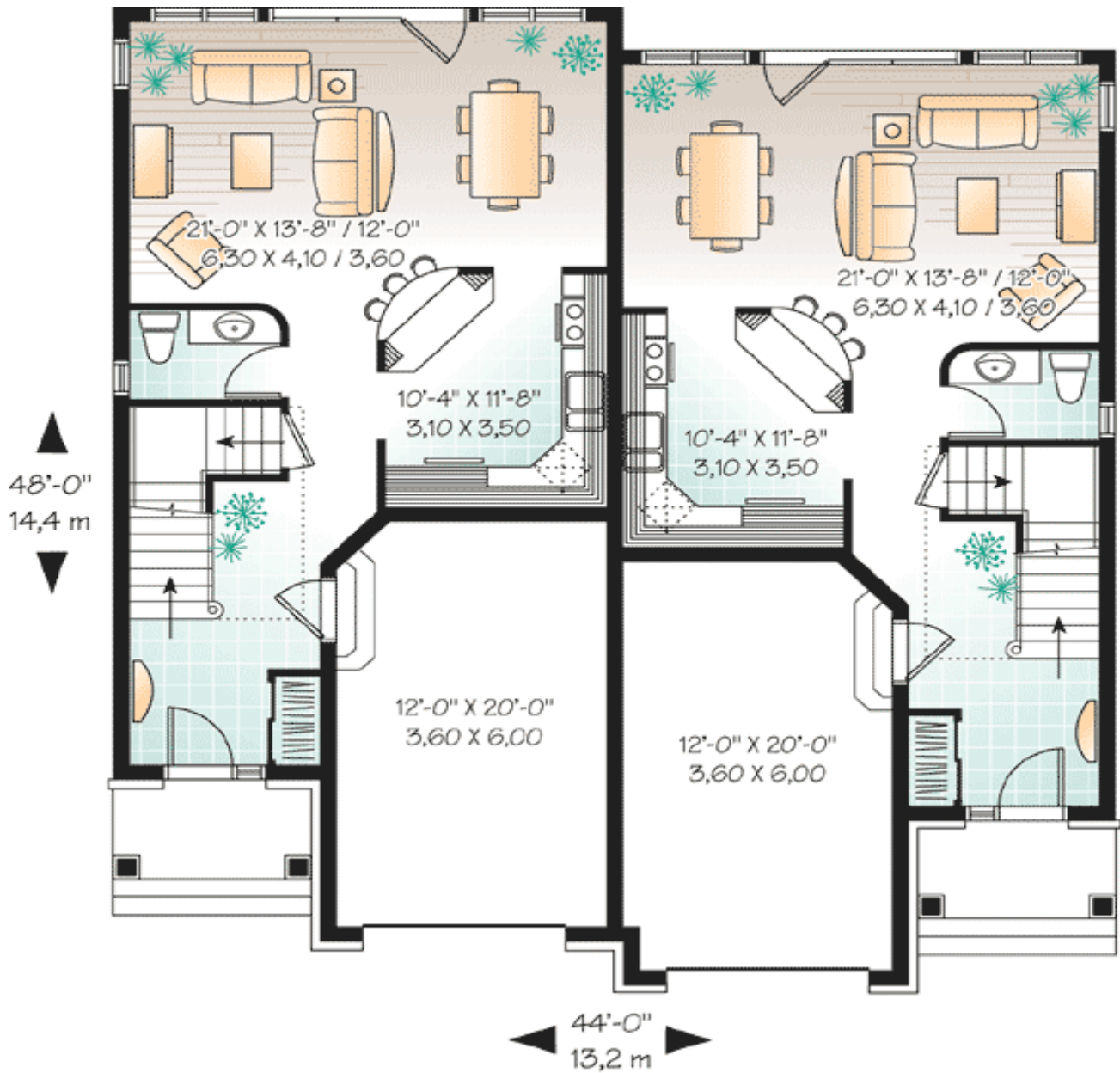
Standard Foundations: Basement

Alternate Foundations: Slab (\$295), Crawl (\$295)

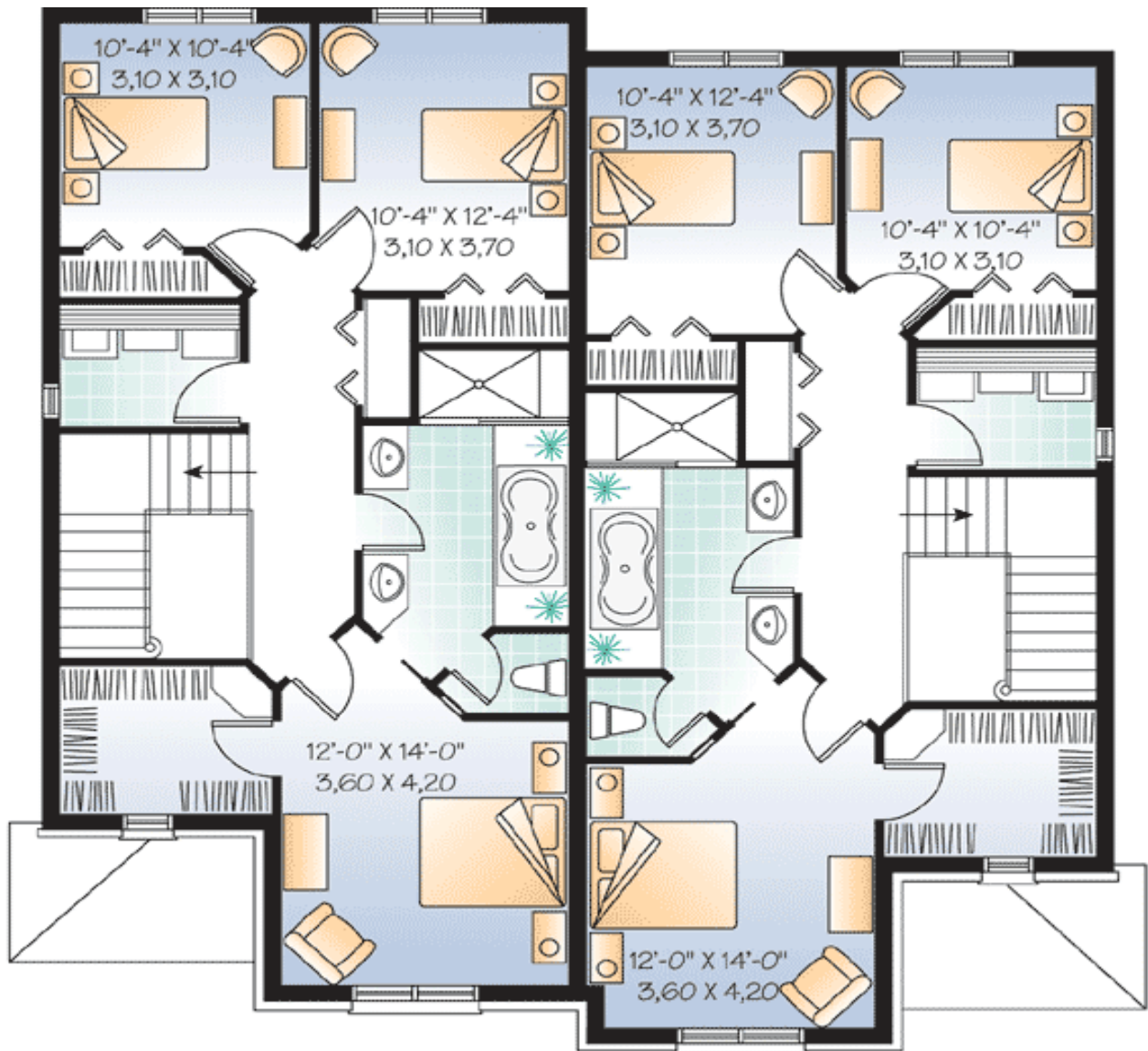
Special Features: PDF, Narrow Lot, CAD Available

One Set	Five Sets	Eight Sets	Reproducible	PDF File	CAD
\$799	\$839	\$869	\$1,049	\$1,049	\$1,765

## Main Level



## 2nd Level



Rear View

