

# Architectural Designs ...selling quality house plans for over 30 years.

Plan W35012GH



House plans are Copyright © 2009 by our architects and designers.

Style: Log, Metric, Mountain

Total Living Area: 2113

Main Flr.: 1898

2nd Flr.: 215

Total Square Feet: 2,773 sq. ft.

Attached Garage: 2 Car, 660 sq. ft.

Bedrooms: 3

Full Bathrooms: 2

Width: 70'8"

Depth: 69'

Maximum Ridge Height: 24'11"

Exterior Walls: Log

Ceiling Height:

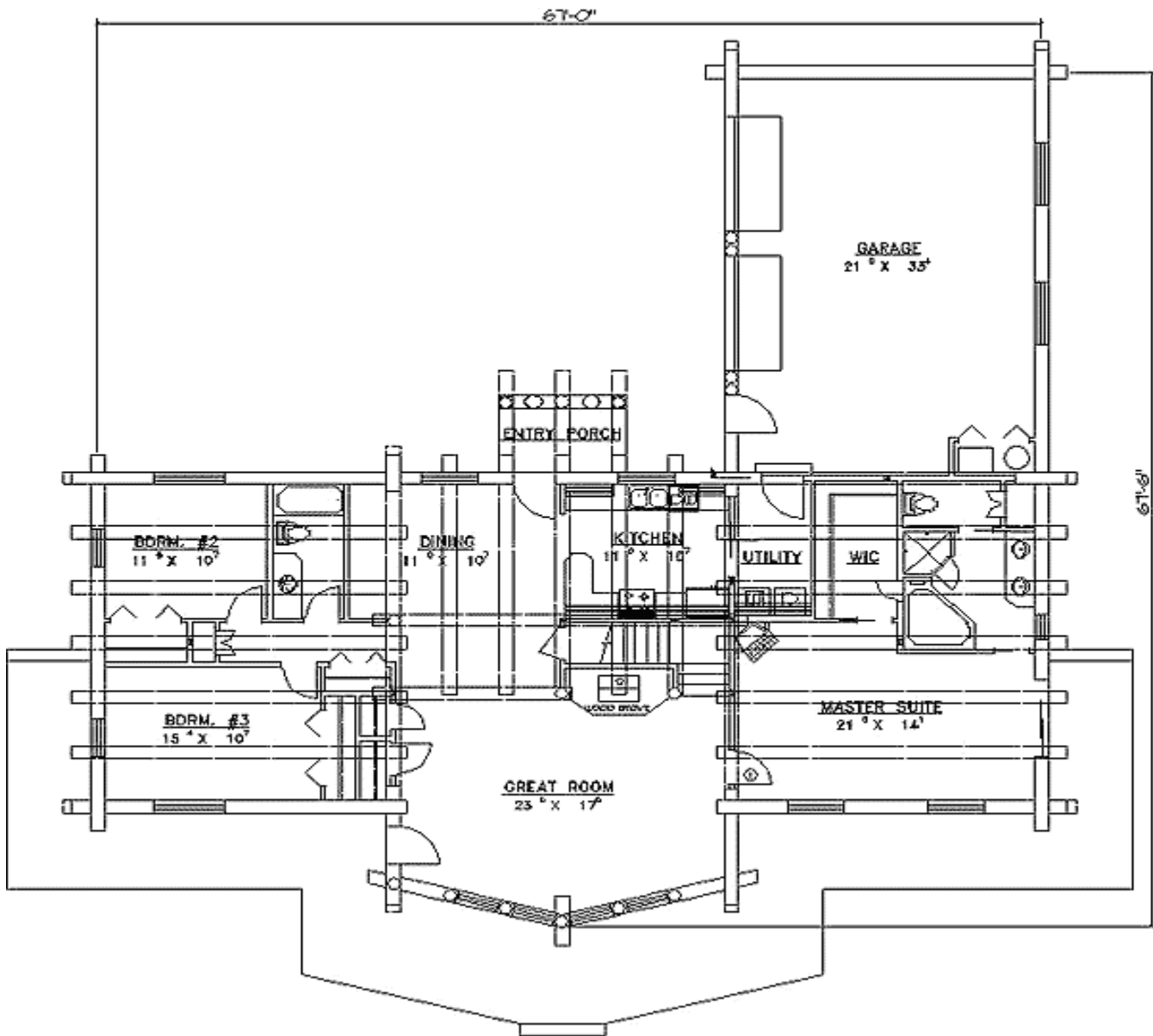
    Main Floor: 9'

Standard Foundations: Crawl

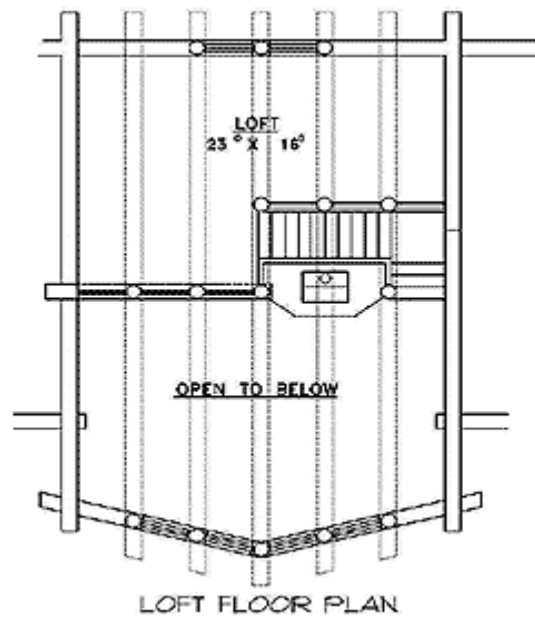
Special Features: CAD Available, PDF, 1st Floor Master Suite, Loft

Five Sets	Eight Sets	Reproducible	PDF File	CAD
\$625	\$710	\$650	\$850	\$850

## Main Level



## 2nd Level



# Architectural Designs ...selling quality house plans for over 30 years.

Photo



Rear View

