

Architectural Designs ...selling quality house plans for over 30 years.

Plan W4719PR: Classic Gothic Revival-Inspired Home



House plans are Copyright © 2009 by our architects and designers.

- Steeply pitched gable roofs trimmed with ornate gingerbread coupled with vertical board-and-batten siding give this storybook cottage its Gothic Revival flavor. A brick foundation helps define the floorline, while turned posts and railings outline and beautify the front porches.
- Paired French doors open to a spacious living room warmed by a corner wood stove. To the rear, cabinets and a snack bar delineate the borders of the kitchen/dining room while screening the space from the living room. There is also a large pantry and a laundry alcove that can be relocated should the house be built with a basement.
- The spacious first floor master bedroom is designed with comforts that include a walk-in closet and a compartmented bathroom with dressing area. Upstairs, two bedrooms share a second full bathroom. Twin French doors in the larger front-facing bedroom open to a private deck
- Ceilings: 8' first floor, 9' second floor and master bedroom.
- Related Plans: For slightly alternate dimensions, see house plan 43018PF.

Style: Beach, Cottage, Country, Victorian

Total Living Area: 1315

Main Flr.: 835

2nd Flr.: 480

Front Porch: 150 sq. ft.

Total Square Feet: 1,315 sq. ft.

Bedrooms: 3

Full Bathrooms: 2

Width: 38'2"

Depth: 34'

Maximum Ridge Height: 26'

Exterior Walls: 2x6

Ceiling Height:

Main Floor: 8'

2nd Floor: 9'

Other: 9' MBR

Standard Foundations: Crawl

Special Features: Handicapped Accessible, 1st Floor Master Suite, Narrow Lot, Corner Lot

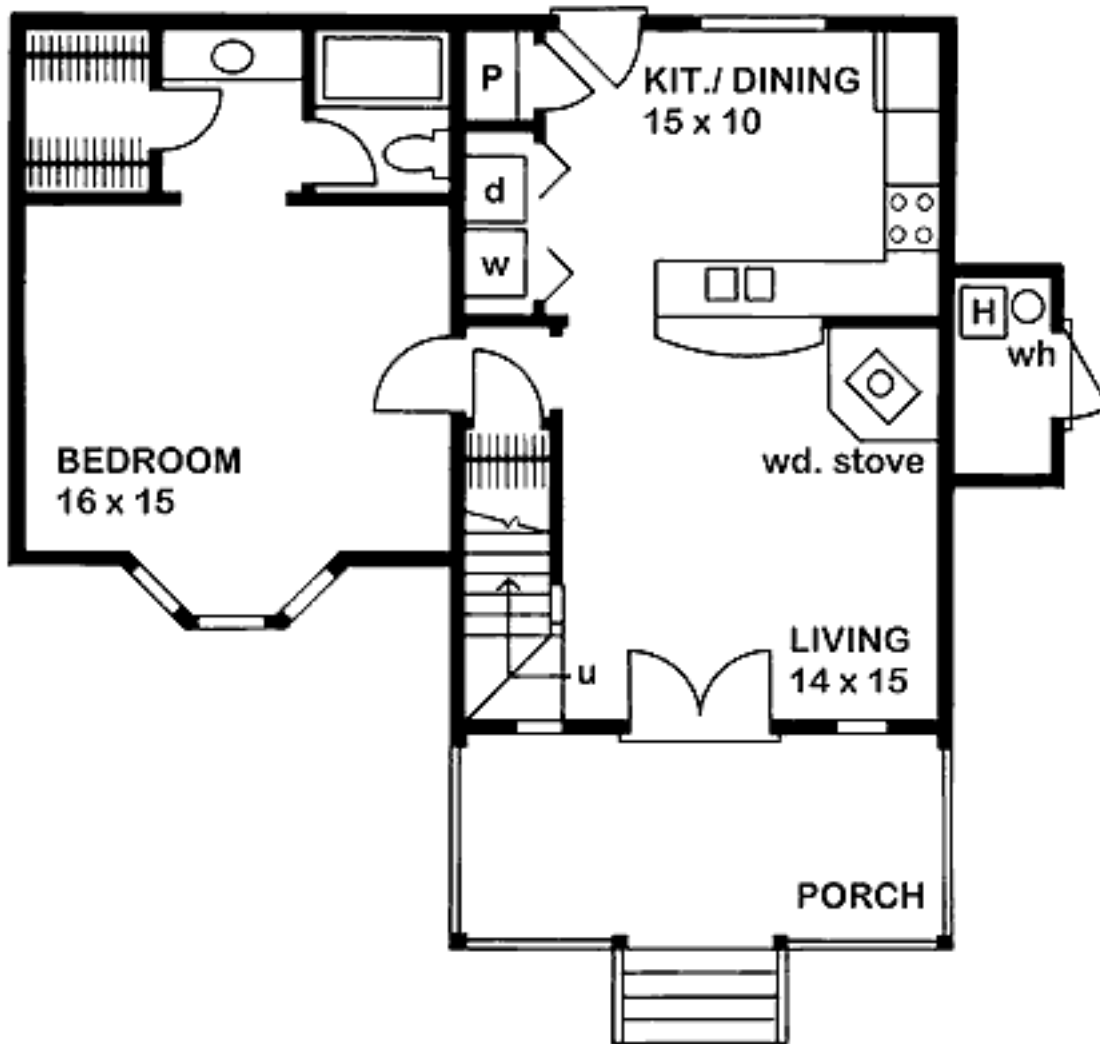
One Set
\$395

Five Sets
\$460

Eight Sets
\$505

Reproducible
\$605

Main Level



2nd Level

