

# Architectural Designs ...selling quality house plans for over 30 years.

Plan W2151DR: Smart House Plan with Alternate Garage



House plans are Copyright © 2009 by our architects and designers.

- The living room features an attractive corner fireplace. Across the foyer, a private study makes for a nice retreat.
- The kitchen features a central island lunch counter. The dining room is nearby and is set off by a recessed bay full of windows.
- Laundry, a half bath and a closet complete this floor.
- The second floor features a comfortable bathroom with abundant natural lighting from skylights. The master bedroom has two separate closets and two additional bedrooms complete the home.
- Related Plan: Need a garage? See house plan 21507DR.

Style: Canadian, Country, Farmhouse, Metric

Total Living Area: 1700

Main Flr.: 860

2nd Flr.: 840

Basement Unfinished: 860 sq. ft.

Front Porch: 303 sq. ft.

Total Square Feet: 2,863 sq. ft.

Bedrooms: 3

Full Bathrooms: 1

Half Bathrooms: 1

Width: 30'

Depth: 29'8"

Maximum Ridge Height: 28'10"

Exterior Walls: 2x6

Ceiling Height:

Main Floor: 8'

2nd Floor: 8'

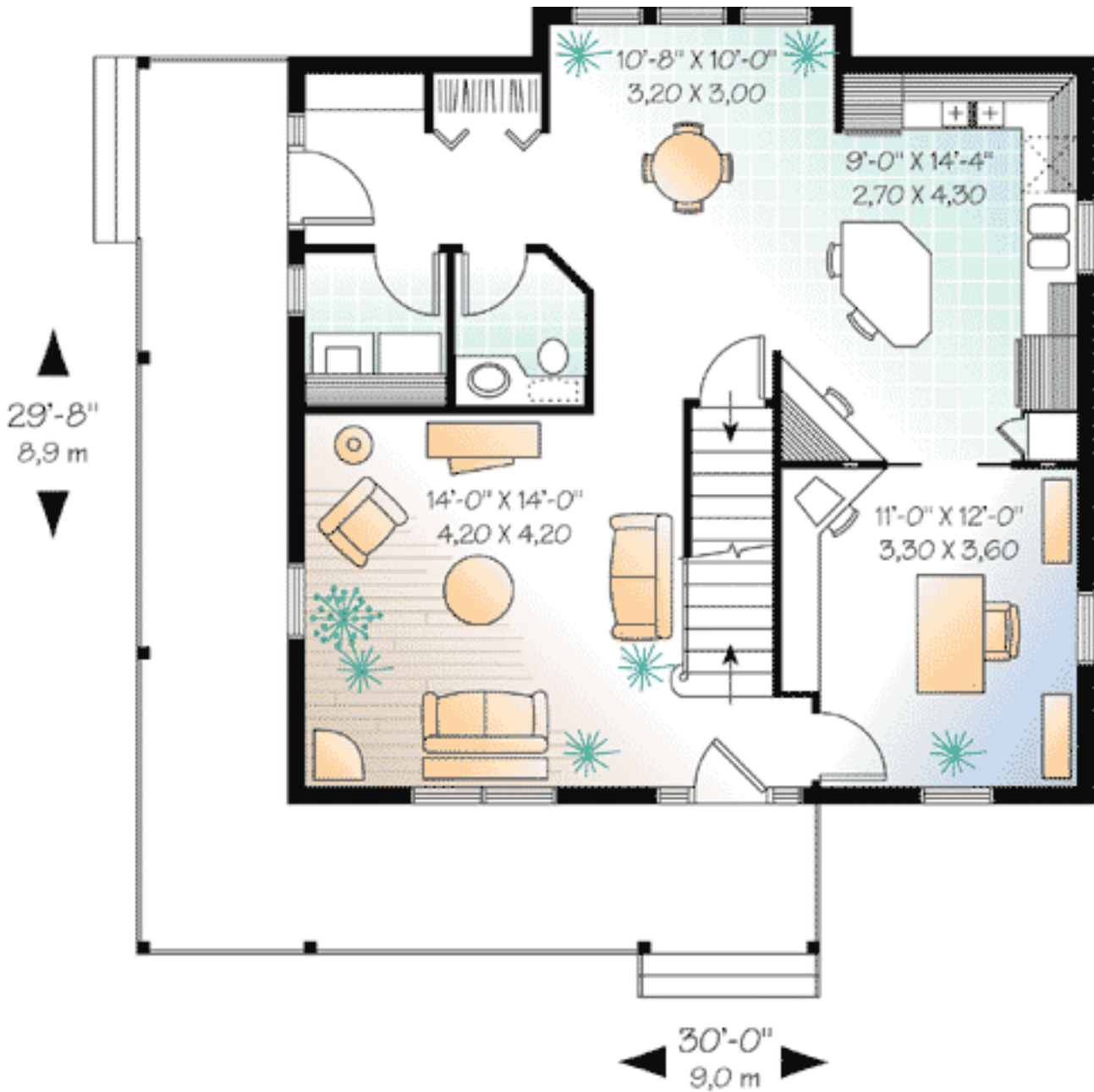
Standard Foundations: Basement

Alternate Foundations: Slab (\$295), Crawl (\$295)

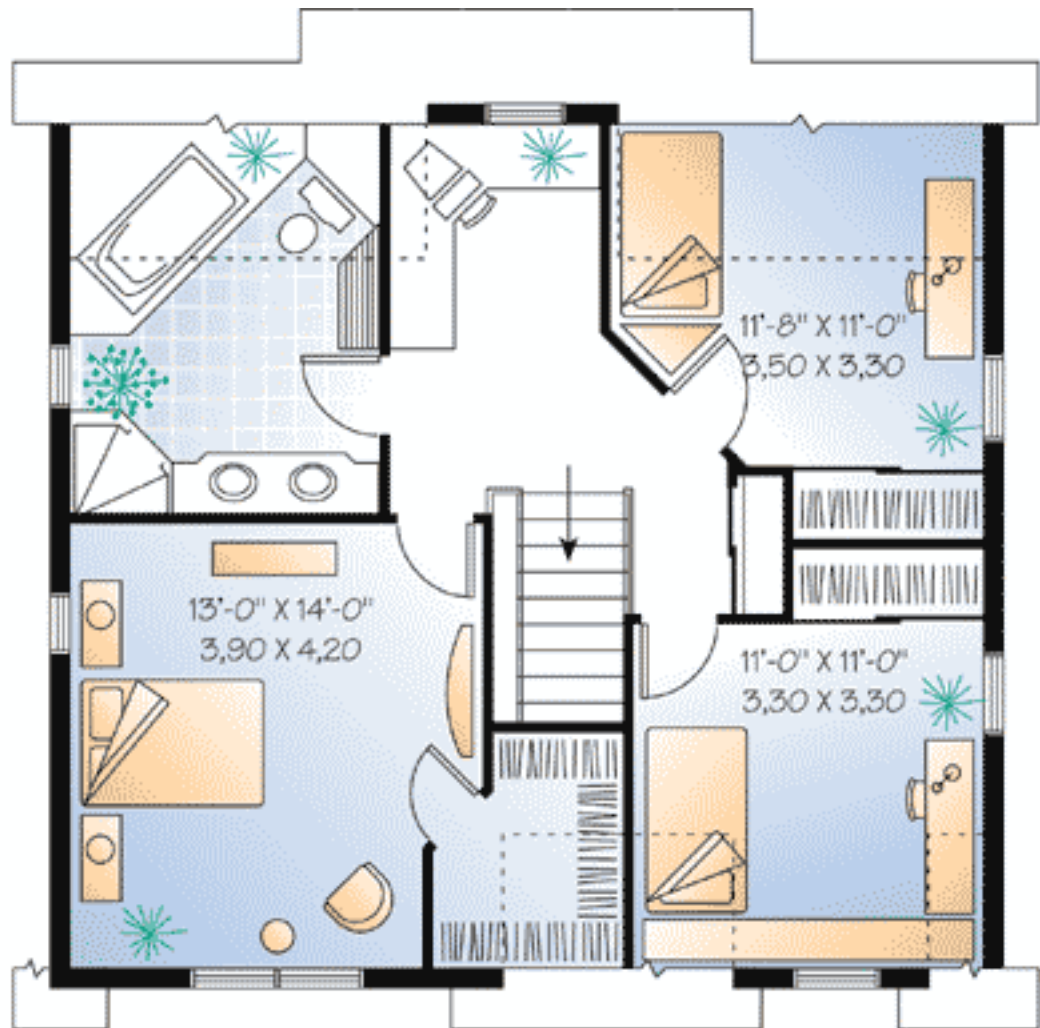
Special Features: Narrow Lot, Photo Gallery, CAD Available, PDF

One Set	Five Sets	Eight Sets	Reproducible	PDF File	CAD
\$599	\$639	\$669	\$849	\$849	\$1,545

## Main Level



## 2nd Level



Elevation #2



Rear View

