

Architectural Designs ...selling quality house plans for over 30 years.

Plan W26136SD: A Simple Neighborly Ranch



House plans are Copyright © 2009 by our architects and designers.

- A simple ranch house plan design with a neighborly front porch, this home offers three bedrooms and two full baths within its 1,248 square feet of heated area.
- A spacious living room features a fireplace and twin windows.
- The kitchen/dining room provides a pantry, twin windows, and convenient access to the rear deck.
- A separate utility room reduces laundry noise.
- The master bedroom has a walk-in closet and a private full bath with a double vanity.
- Economical size, efficient layout, and creature comforts all add up to a charming design that is perfect for many first-time homebuyers.

Style: Ranch, Traditional

Total Living Area: 1248

Main Flr.: 1248

Deck & Porch: 204 sq. ft.

Total Square Feet: 1,452 sq. ft.

Bedrooms: 3

Full Bathrooms: 2

Width: 40'

Depth: 32'

Exterior Walls: 2x4

Ceiling Height:

Main Floor: 8'

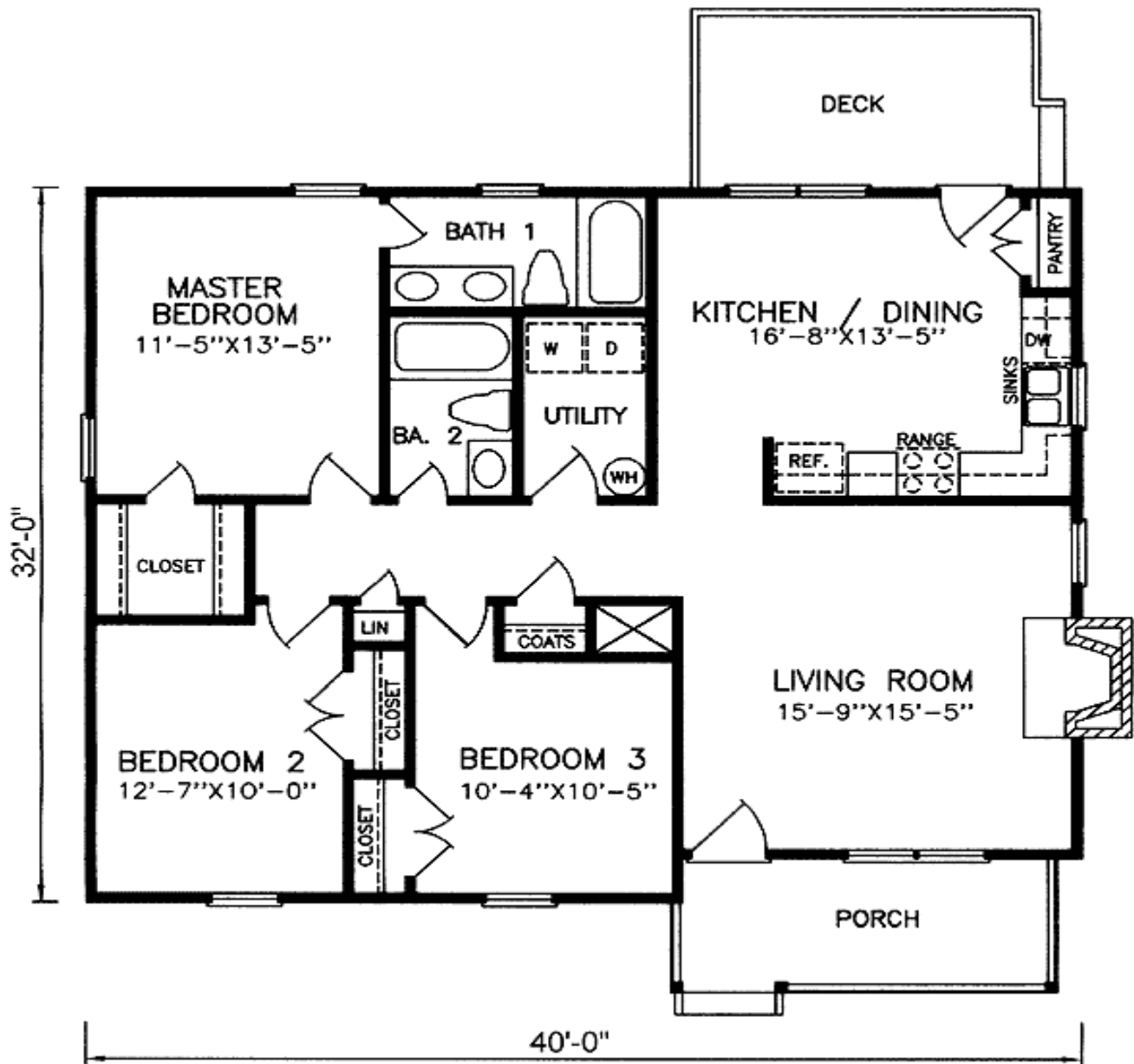
Standard Foundations: Slab, Crawl

Alternate Foundations: Basement (\$100)

Special Features: Narrow Lot, CAD Available, PDF

One Set	Five Sets	Eight Sets	Reproducible	PDF File	CAD
\$465	\$595	\$715	\$695	\$695	\$1,150

Main Level



Sides/Rear



RIGHT SIDE ELEVATION



REAR ELEVATION



LEFT SIDE ELEVATION