

# Architectural Designs ...selling quality house plans for over 30 years.

Plan W6364HD: Outdoor Spaces



House plans are Copyright © 2009 by our architects and designers.

- Projecting a tropical feeling, this luxuriously appointed cottage house plan features a lookout high atop the roof that is accessed by a spiral staircase off the master suite.
- The vaulted living room opens to a screened deck that can also be accessed from the island kitchen. Another balcony lies off the dining room.
- Occupying the upper level, the master suite enjoys a private balcony, twin walk-in closets and a bath with a step-up tub and separate shower.
- The den could easily be used as a third bedroom.
- Related Plans: See these related beach cottages - 6351HD and 6376HD.

Style: Beach, Cottage, Vacation

Total Living Area: 1679

Main Flr.: 1125

2nd Flr.: 554

Total Square Feet: 1,679 sq. ft.

Bedrooms: 3

Full Bathrooms: 2

Width: 42'9"

Depth: 45'

Maximum Ridge Height: 36'7"

Exterior Walls: 2x4

Ceiling Height:

Main Floor: 8'

2nd Floor: 10'6"

Other: 19'2" Vaulted Living Room

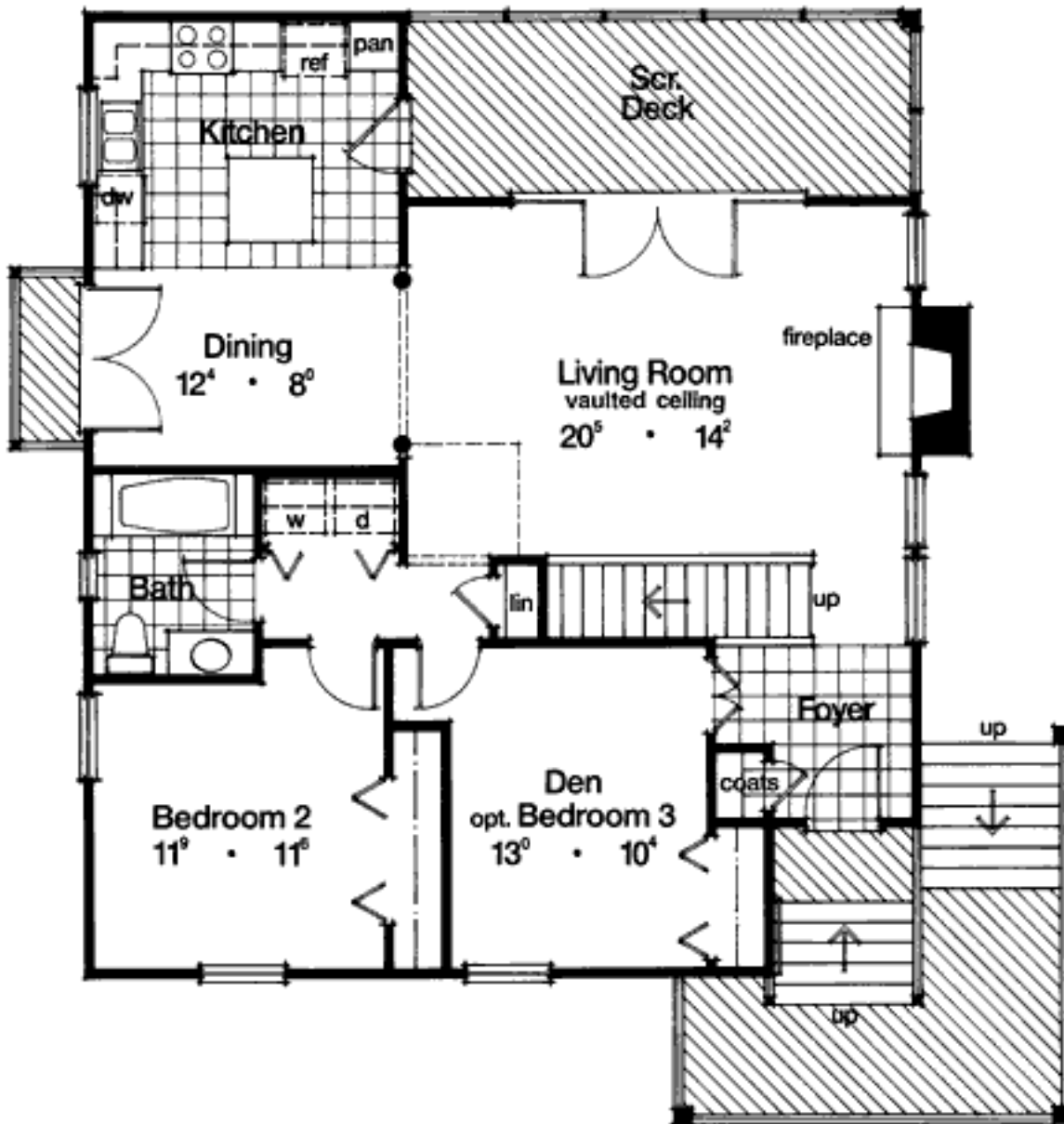
Standard Foundations: Piling

Alternate Foundations: Slab (\$675), Basement (\$675), Crawl (\$675)

Special Features: Narrow Lot, PDF, CAD Available

One Set	Five Sets	Eight Sets	Reproducible	PDF File	CAD
\$485	\$545	\$590	\$710	\$710	\$1,420

## Main Level



## 2nd Level

