

Plan W2068GA: Traditional Split-Level Home Plan



House plans are Copyright © 2009 by our architects and designers.

- This exceptional split-foyer home plan blends a rare mixture of luxury and economy. Careful design provides extravagant features while remaining a compact and economical 999 square feet.
- The dramatic entry is brightened by the glass door with sidelights and an arched transom. A vaulted family room, dining room, and kitchen provide a feeling of spaciousness. The family room is accented with a fireplace, triple window unit, and a French door leading to the 17 x 11 deck. A breakfast bar and an abundance of cabinets are highlights of the corridor kitchen. The master suite has a walk-in closet and large bath with a 5' vanity and garden tub. A second bedroom and bath complete the main level.
- The lower level has a garage, laundry room and a future studio. This 300 square foot expansion space may serve as a second master suite or apartment and features a kitchenette.
- Need more space? See house plan 2006GA.

Style: Split Level

Total Living Area: 999

Main Flr.: 963

Lower Level: 36

Total Square Feet: 1,417 sq. ft.

Attached Garage: 2 Car, 418 sq. ft.

Bedrooms: 2

Full Bathrooms: 2

Width: 40'

Depth: 23'

Maximum Ridge Height: 28'6"

Exterior Walls: 2x4

Ceiling Height:

Main Floor: 8'

Other: 13'10" Vaulted Family & Dining Rooms

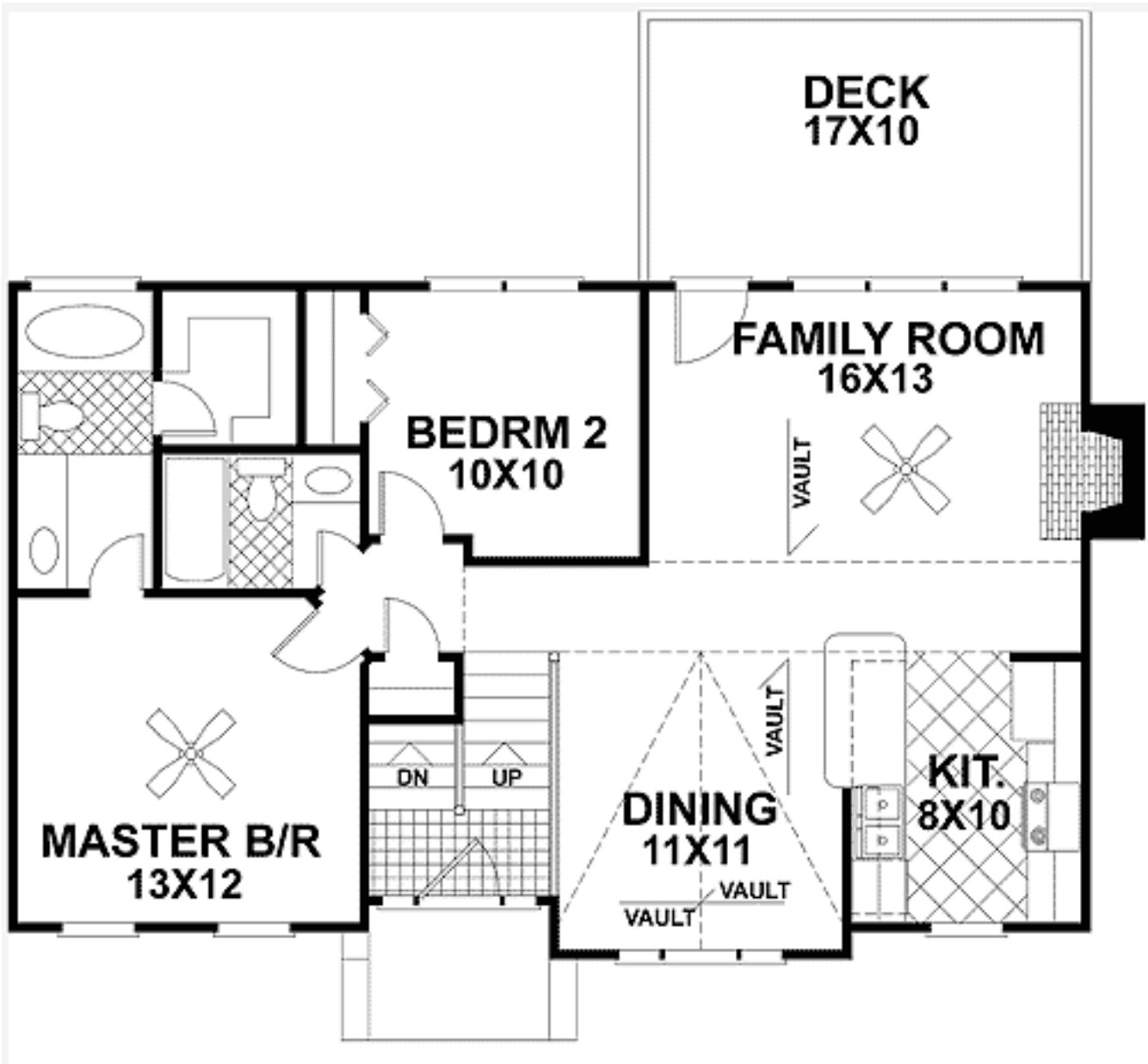
Standard Foundations: Slab

Alternate Foundations: Basement (\$150), Crawl (\$150)

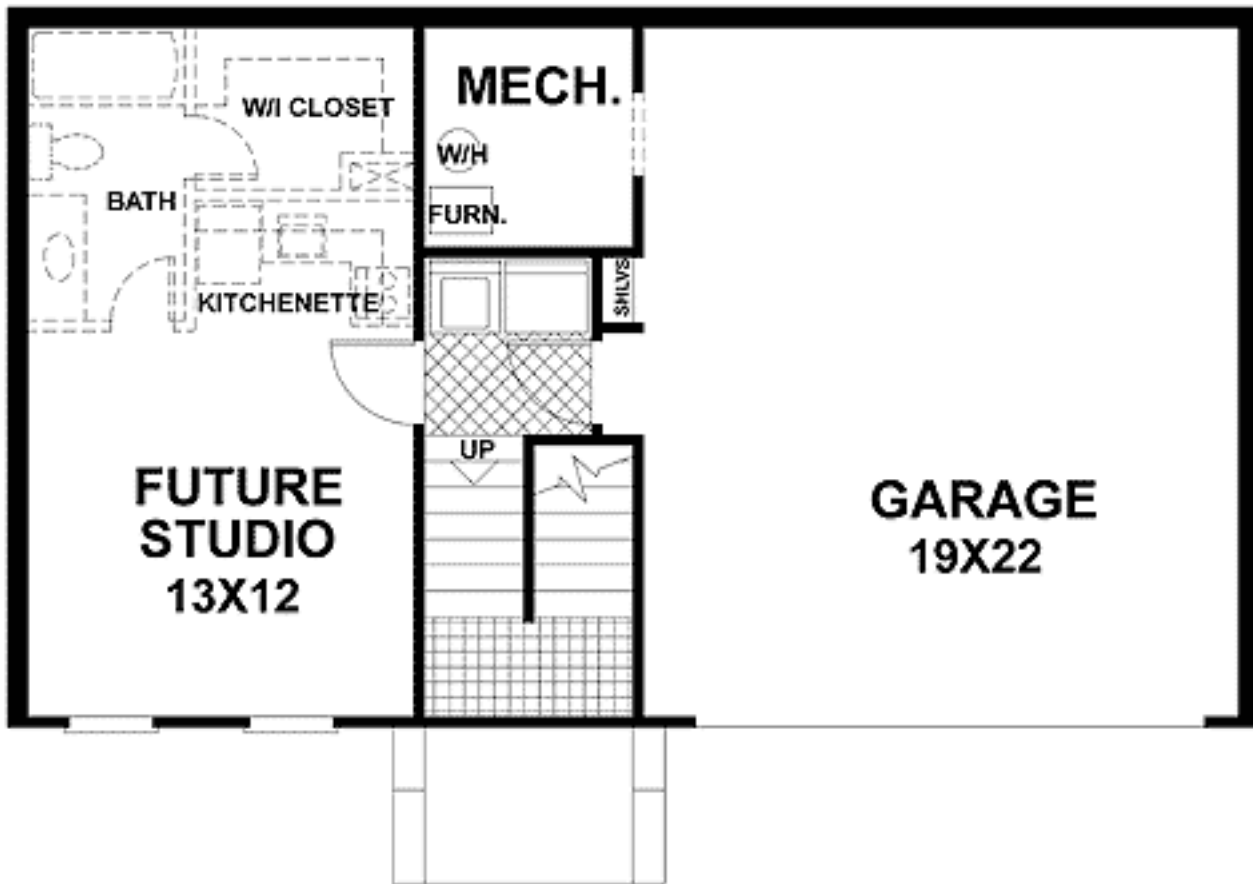
Special Features: 1st Floor Master Suite, PDF, CAD Available, Narrow Lot

One Set	Five Sets	Eight Sets	Reproducible	PDF File	CAD
\$450	\$550	\$650	\$725	\$725	\$1,000

Main Level



Lower Level



Rear View

