

Architectural Designs ...selling quality house plans for over 30 years.

Plan W5034CZ: Two-Sided Fireplace



House plans are Copyright © 2009 by our architects and designers.

- Five gables and a front stoop with arches and tapered pillars enliven the front elevation of this two-story Craftsman dwelling.
- Inside, a loft that can house a home office overlooks the vaulted great room. The great room shares a two-sided fireplace with the adjacent hearth room, which forms one large space with the dining area and the kitchen. A central island, walk-in pantry and built-in desk are features of this area.
- Placed in its own wing, the master suite comprises a bedroom with a bay window and a tray ceiling, a large walk-in closet and a two-compartment, five-fixture bath with its own linen closet.
- Upstairs, another full bath and two family bedrooms, each with a walk-in closet, complete the design.
- Bonus: An optional layout gives you a fourth bedroom upstairs of 200 sq. ft. above the great room).

Style: Craftsman

Total Living Area: 2366

Main Flr.: 1701

2nd Flr.: 665

Optional 4th Bedroom:

Total Square Feet: 3,057 sq. ft.

Attached Garage: 2 Car, 491 sq. ft.

Bedrooms: 3, 4

Full Bathrooms: 2

Half Bathrooms: 1

Width: 52'8"

Depth: 56'8"

Maximum Ridge Height: 24'

Exterior Walls: 2x4

Optional Exterior Walls: 2x6 \$150

Ceiling Height:

Main Floor: 9'

2nd Floor: 8'

Other: 17'8 Great Room

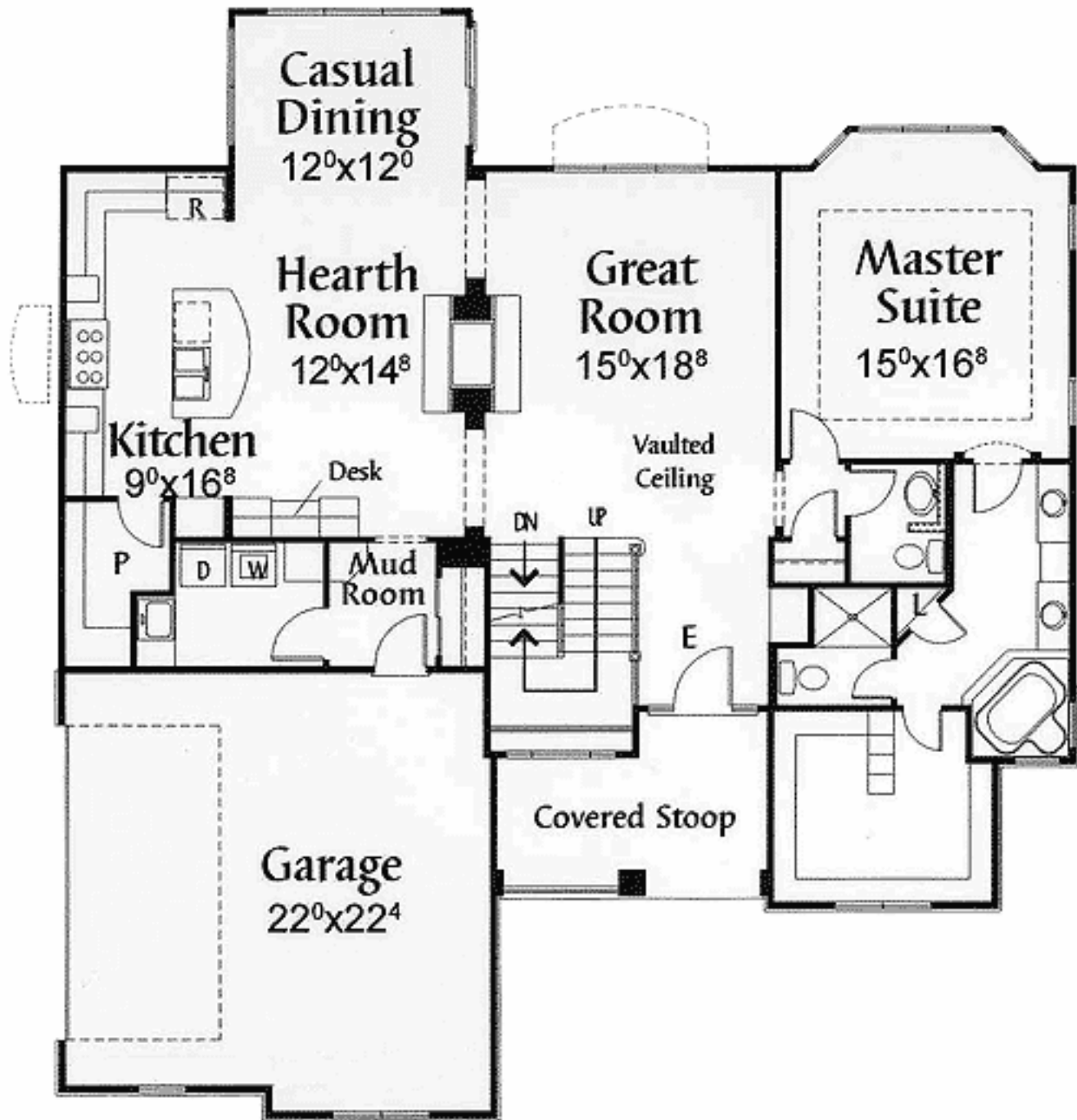
Standard Foundations: Basement

Alternate Foundations: Slab (\$300), Walkout (\$125), Crawl (\$200)

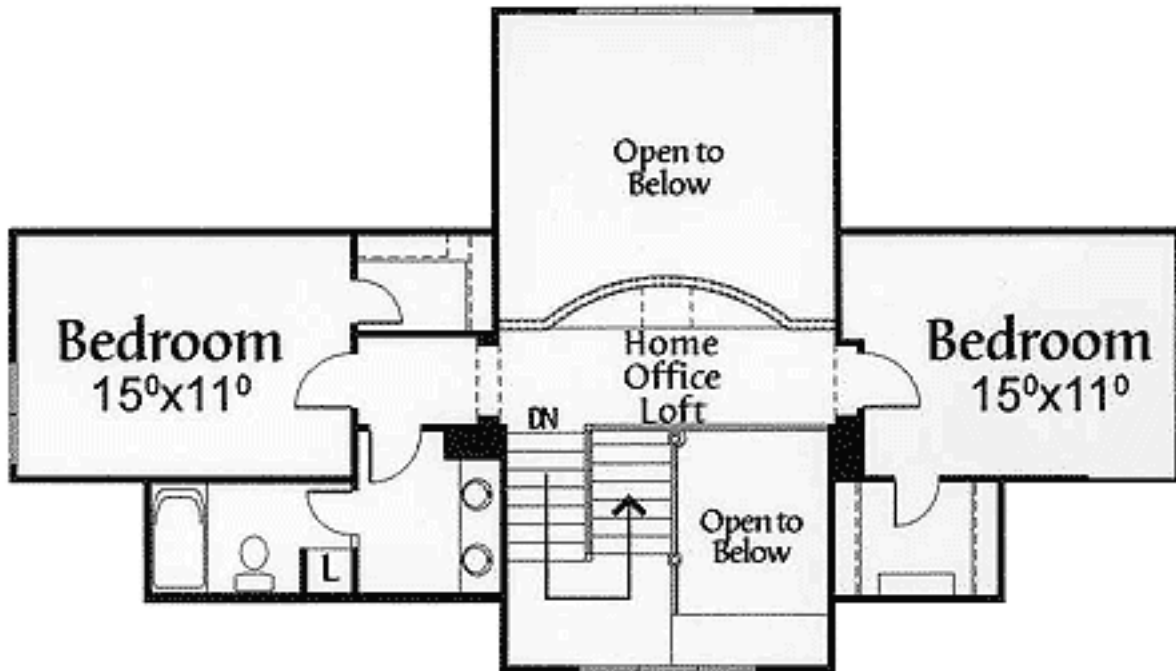
Special Features: CAD Available, 1st Floor Master Suite, Butler Walk-in Pantry, Corner Lot, Den-Office-Library-Study, Loft

One Set	Five Sets	Eight Sets	Reproducible	CAD
\$695	\$845	\$935	\$845	\$2,500

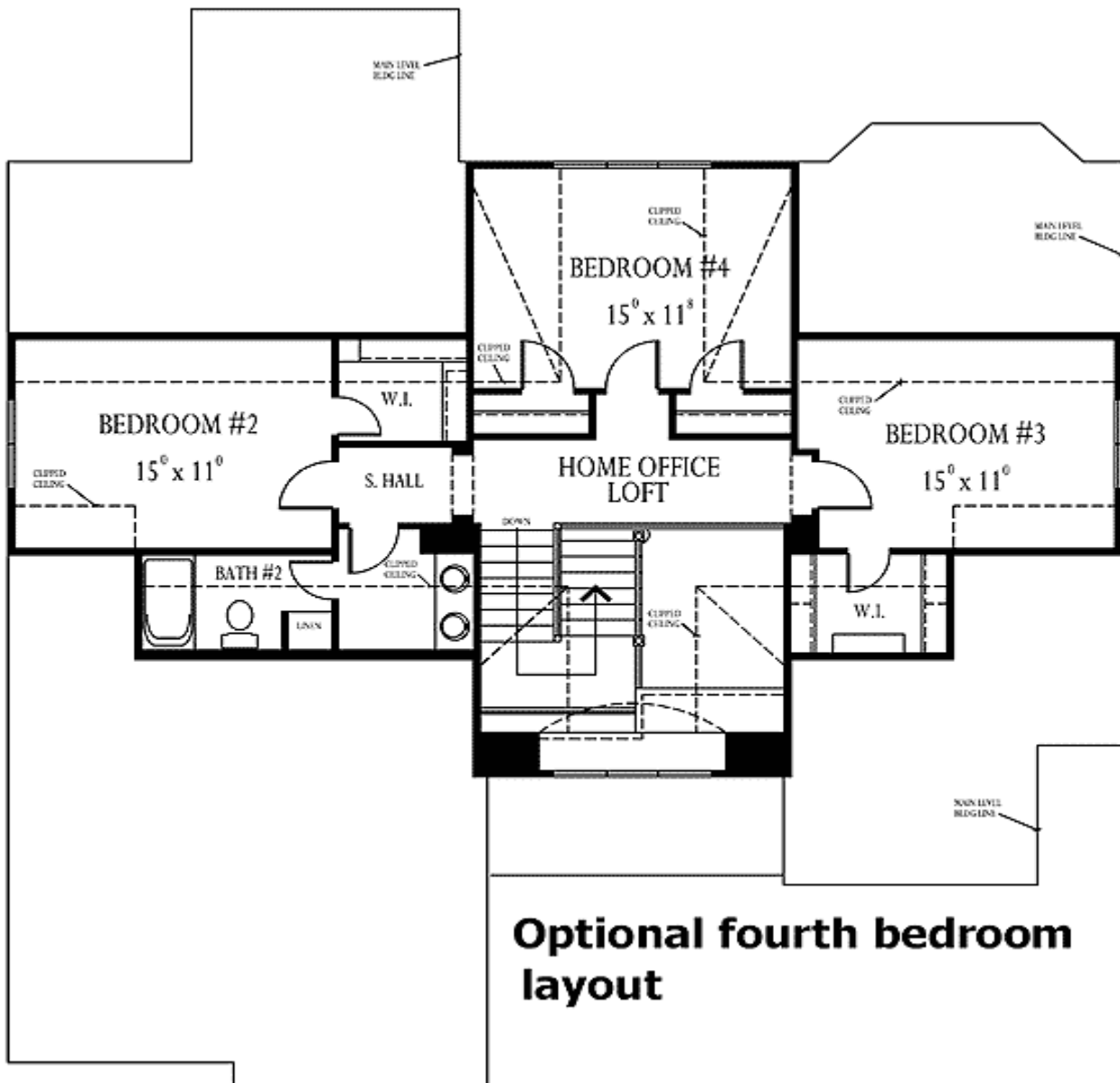
Main Level



2nd Level

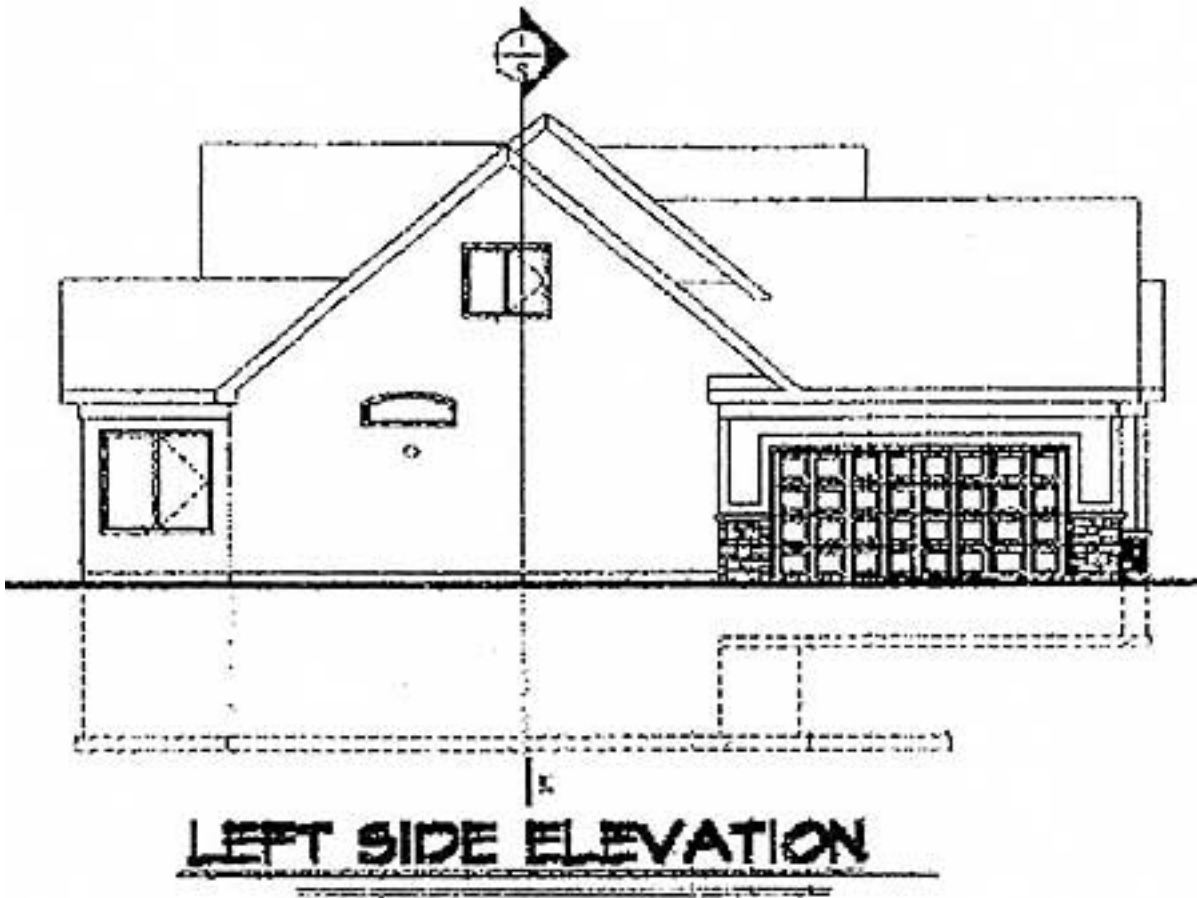


Optional



Optional fourth bedroom layout

Left Side



Right Side



Rear View

