

# Architectural Designs ...selling quality house plans for over 30 years.

Plan W6913AM: Luxurious Contemporary



House plans are Copyright © 2009 by our architects and designers.

- This spacious, luxurious contemporary home offers lots of living space and a variety of extra features.
- Opening from the foyer and gallery are formal vaulted living and dining rooms and the family area. The living room and the den share a wonderful see-through fireplace.
- The large kitchen contains a central prep island with a snack bar. The breakfast nook is set in a bay, and the family room features a corner fireplace. A laundry room with a sink and cabinets completes the main level.
- On the upper level, the master bedroom has a 10-foot ceiling and another fireplace and opens to an amenity-filled bath. The two other bedrooms have walk-in closets and share a bathroom.
- The drive-under three-car garage with its shop area accommodates an eight-foot ceiling.
- Related Plan: For an alternate exterior and layout, see house plan 6971AM.

Style: Contemporary, European

Total Living Area: 3443

Main Flr.: 1989

2nd Flr.: 1349

Lower Level: 105

Bonus: 487 sq. ft.

Porch, Combined: 368 sq. ft.

Attached Garage: 3 Car, 983 sq. ft.

Bedrooms: 3

Full Bathrooms: 2

Half Bathrooms: 1

Width: 63'

Depth: 48'

Maximum Ridge Height: 36'4"

Exterior Walls: 2x6

Ceiling Height:

Main Floor: 9'

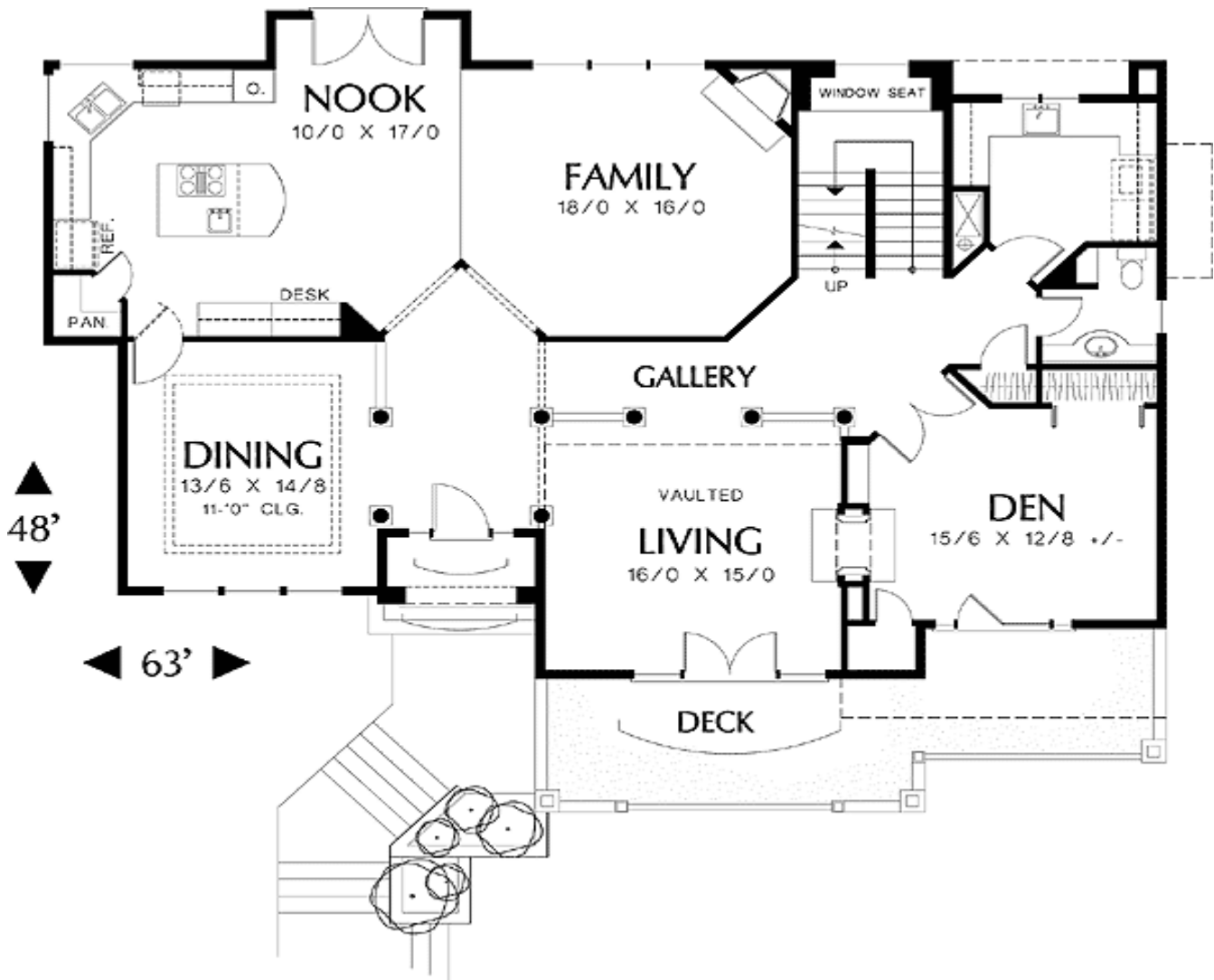
Other: 11' Tray Dining Room; 15' Vaulted Living Room

Standard Foundations: Daylight

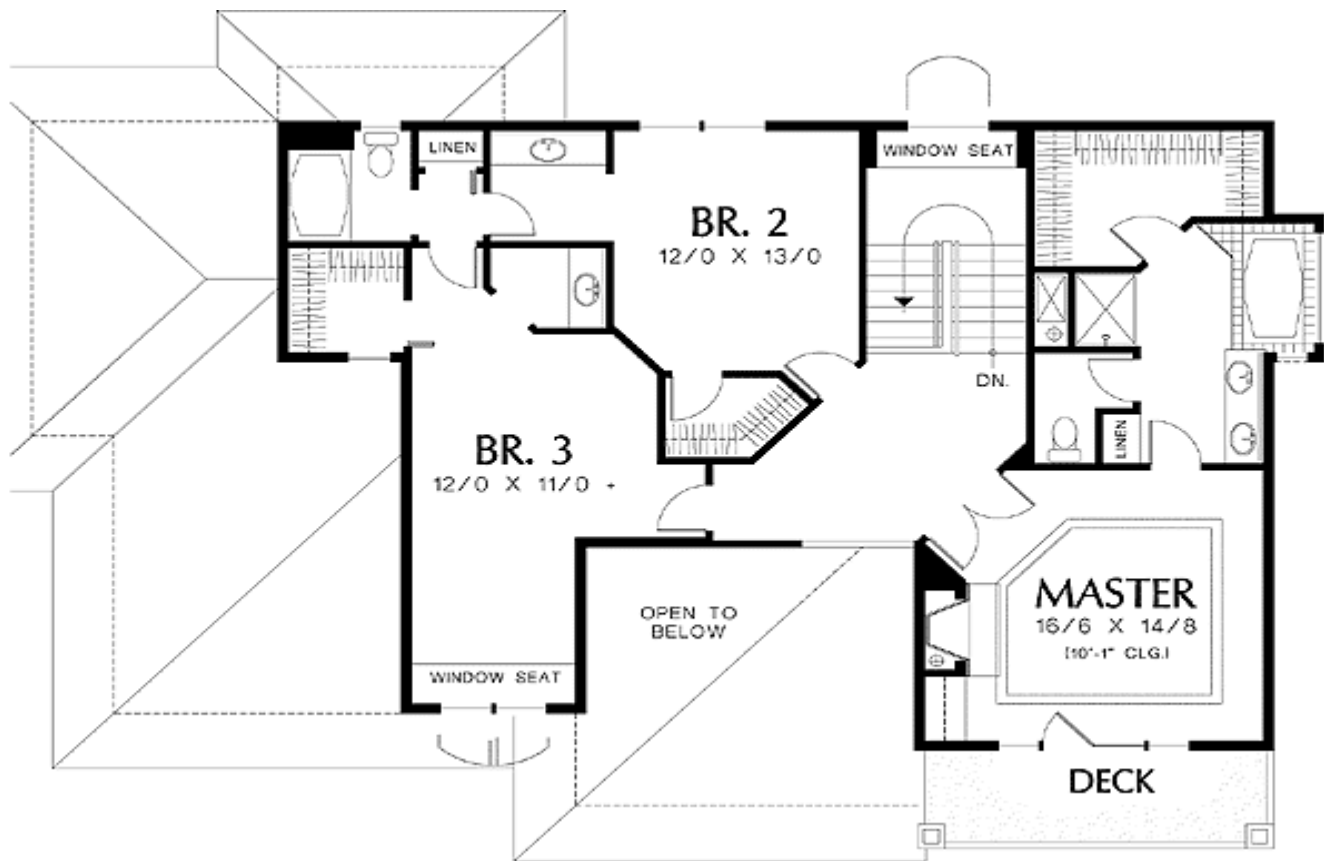
Special Features: 1st Floor Master Suite, CAD Available, Sloping Lot, PDF, Photo Gallery, Bonus Room, Drive Under Garage

One Set	Five Sets	Eight Sets	Reproducible	PDF File	CAD
\$695	\$750	\$850	\$1,200	\$1,200	\$1,850

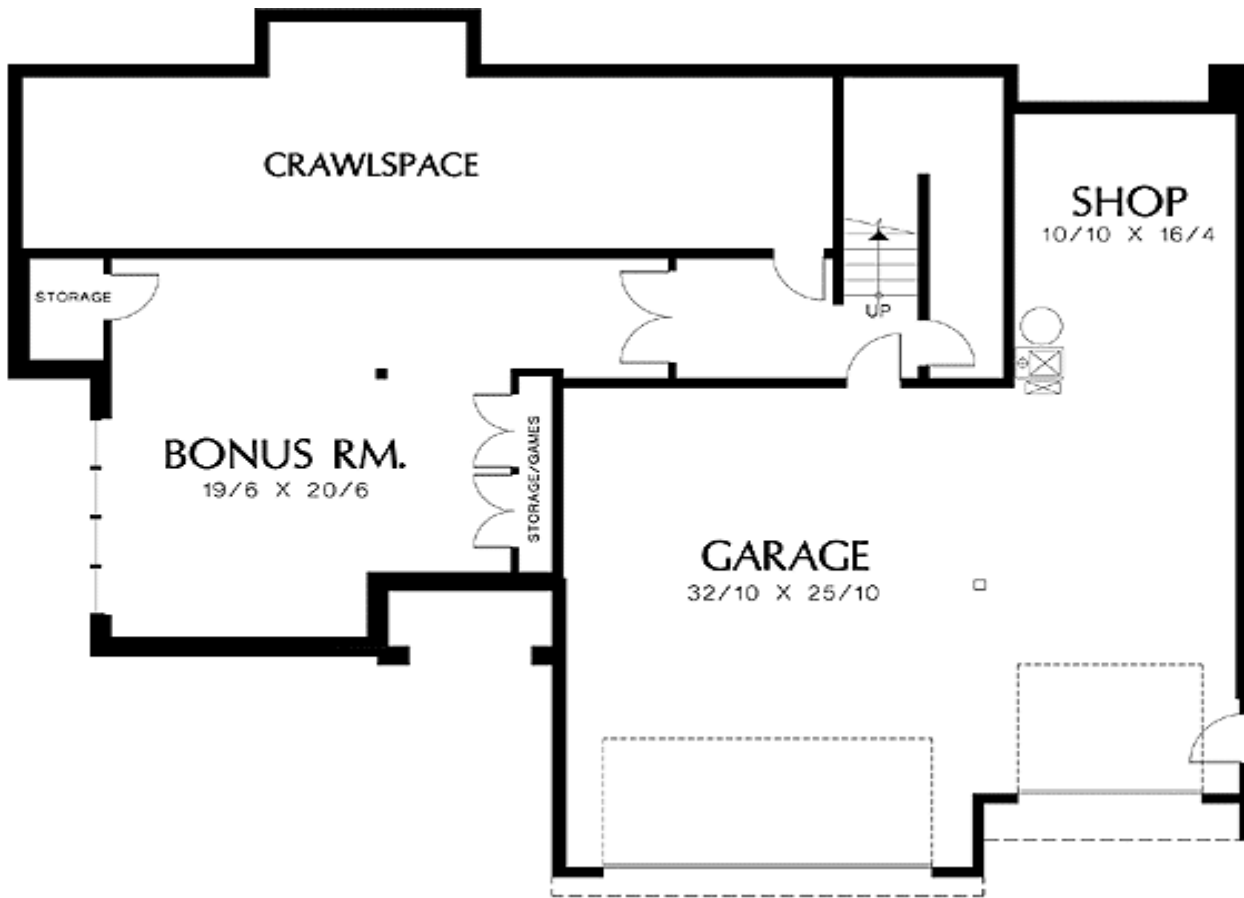
## Main Level



2nd Level



Lower Level



# Architectural Designs ...selling quality house plans for over 30 years.

Photo



# Architectural Designs ...selling quality house plans for over 30 years.

Photo #2



Rear View



Living Room

