

Architectural Designs ...selling quality house plans for over 30 years.

Plan W7572DD: Affordable Cape



House plans are Copyright © 2009 by our architects and designers.

- Fitting nicely on a shallow lot, this affordable Cape Cod design offers lots of curb appeal. A rear porch offers an outdoor venue for relaxation.
- Formal living and dining rooms flank the two-story foyer, and a fireplace warms the living room. In the informal area, a deep eating bar separates the kitchen from the family room with its gas fireplace. A nook provides another informal eating space.
- The master suite is complete with a private bath and a walk-in closet.
- Upstairs, two dormered bedrooms share a hall bath with a linen closet.
- Ceilings: 8' standard.
- Foundation: crawl space.

Style: Cape Cod, Country, Traditional

Total Living Area: 1762

Main Flr.: 1172

2nd Flr.: 590

Total Square Feet: 2,247 sq. ft.

Attached Garage: 2 Car, 485 sq. ft.

Bedrooms: 3

Full Bathrooms: 2

Width: 64'

Depth: 30'

Maximum Ridge Height: 22'7"

Exterior Walls: 2x6

Ceiling Height:

Main Floor: 8'

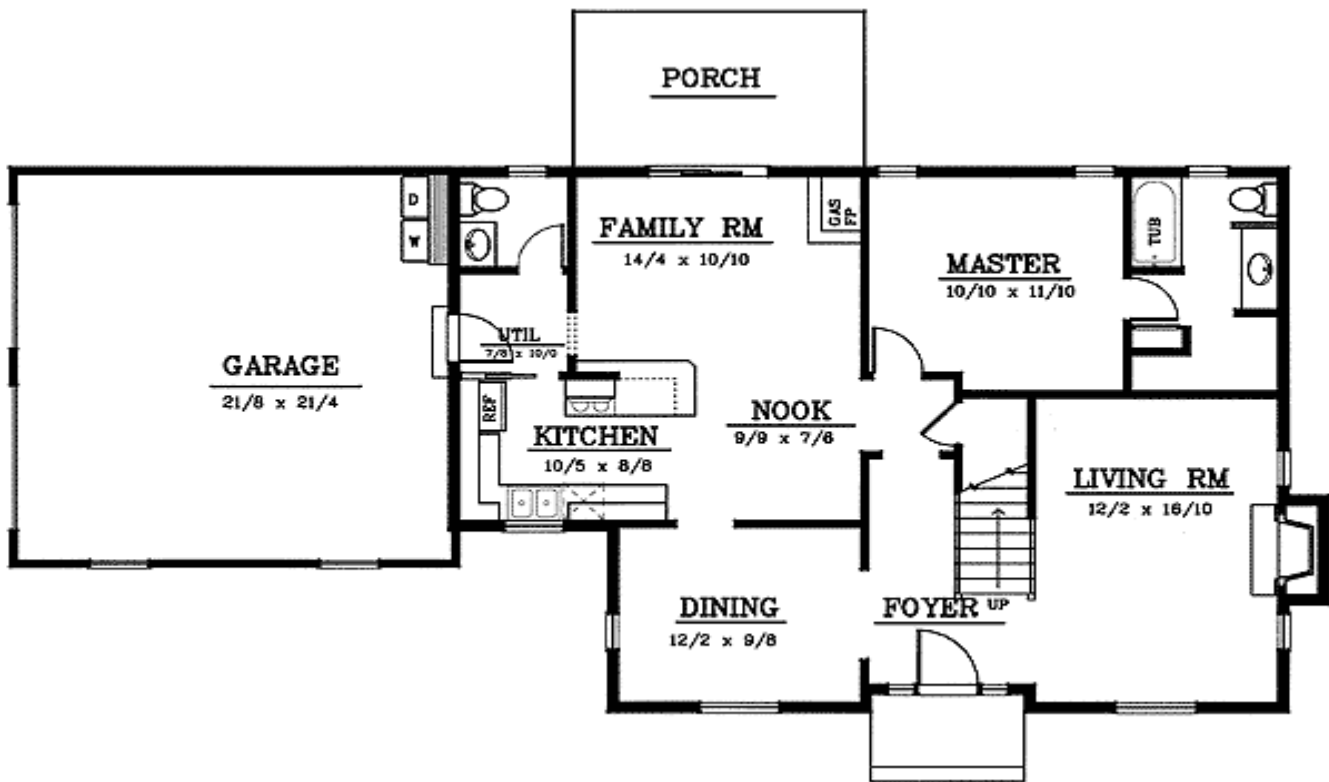
Standard Foundations: Crawl

Alternate Foundations: Slab (\$150), Basement (\$250)

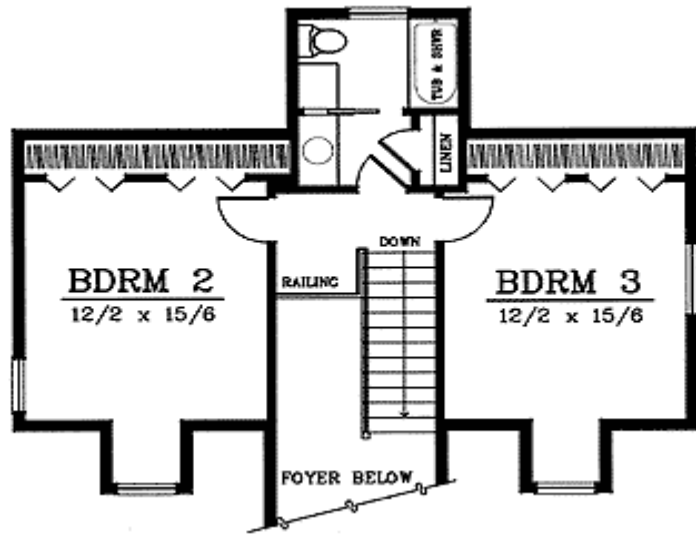
Special Features: 1st Floor Master Suite, CAD Available, PDF

One Set	Five Sets	Eight Sets	Reproducible	PDF File	CAD
\$585	\$650	\$770	\$750	\$750	\$1,300

Main Level



2nd Level



Rear View

