

Plan W2001GA: Lovely Brick Ranch



House plans are Copyright © 2009 by our architects and designers.

- At first glance, this lovely brick and siding ranch appears to be much larger than an economical 1197 square feet. Careful design allows amenities not normally found in a home this size. It's front porch makes this home exceptionally inviting.
- After entering the beveled glass front door, you will be impressed with this home's splendid features, including a fireplace, plant shelf, and vaulted family room. The open transition to the dining room and kitchen adds to the spacious feel. Sliding glass doors with an optional bay provide plenty of light in the dining area. The cook will love the galley kitchen layout and the pantry. There's also a conveniently located laundry room.
- The master bedroom has a roomy walk-in closet and vaulted bath with double-bowl vanity, garden tub and shower. Two secondary bedrooms, each measure a comfortable 12' by 11'.
- Related Plan: Need a larger version? See house plan 2003GA (1,381 sq. ft.).

Style: Ranch

Total Living Area: 1197

Main Flr.: 1197

Total Square Feet: 1,577 sq. ft.

Attached Garage: 2 Car, 380 sq. ft.

Bedrooms: 3

Full Bathrooms: 2

Width: 52'

Depth: 44'

Maximum Ridge Height: 16'

Exterior Walls: 2x4

Ceiling Height:

Main Floor: 8'

Standard Foundations: Slab, Crawl

Alternate Foundations: Basement (\$150)

Special Features: PDF, CAD Available

One Set
\$500

Five Sets
\$600

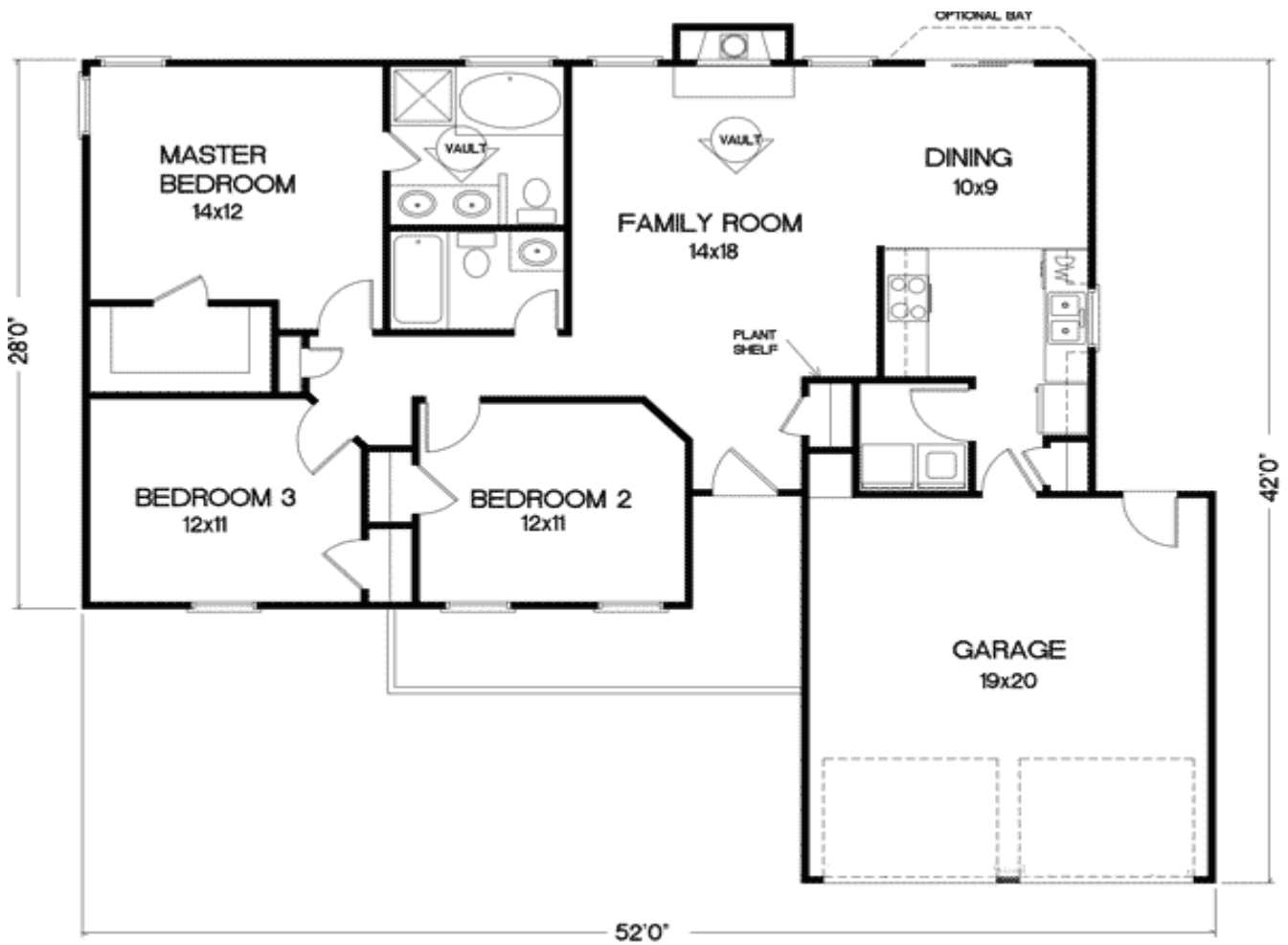
Eight Sets
\$700

Reproducible
\$775

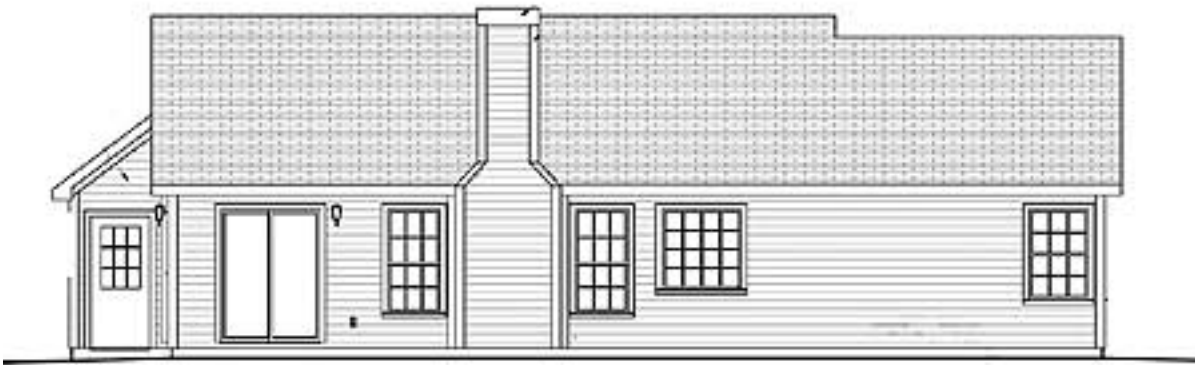
PDF File
\$775

CAD
\$1,100

Main Level



Sides/Rear



REAR ELEVATION



LEFT SIDE ELEVATION



RIGHT SIDE ELEVATION