

Plan W1645S: From Another Era



House plans are Copyright © 2009 by our architects and designers.

- This elegant Victorian home of the Queen Anne era blends a charming Old World exterior with a modern interior plan layout. A covered veranda sweeps around the front half of the house for outdoor relaxation.
- An oval glass front door ushers you into a foyer with an arched opening leading into the living room complete with fireplace and large corner bay. The adjacent formal dining room features corner cabinets.
- The informal family room with optional fireplace has a sliding glass door that opens to the outside terrace.
- The second floor contains a luxurious master suite with private bath, fireplace and a spiral staircase leading to a study in the tower with stained glass windows.
- Two bedrooms and a hall bath with a laundry chute complete this floor. An alternate four bedroom layout is included with the blueprints.
- Foundation: basement.

Style: Victorian

Total Living Area: 2034

Main Flr.: 1006

2nd Flr.: 941

Basement Unfinished: 1,007 sq. ft.

Total Square Feet: 3,210 sq. ft.

Detached Garage: 1 Car, 256 sq. ft.

Bedrooms: 3

Full Bathrooms: 2

Half Bathrooms: 1

Width: 53'

Depth: 46'4"

Maximum Ridge Height: 30'6"

Exterior Walls: 2x4

Ceiling Height:

 Main Floor: 8'2"

 2nd Floor: 8'2"

Standard Foundations: Basement

Special Features: Photo Gallery

One Set

\$485

Five Sets

\$545

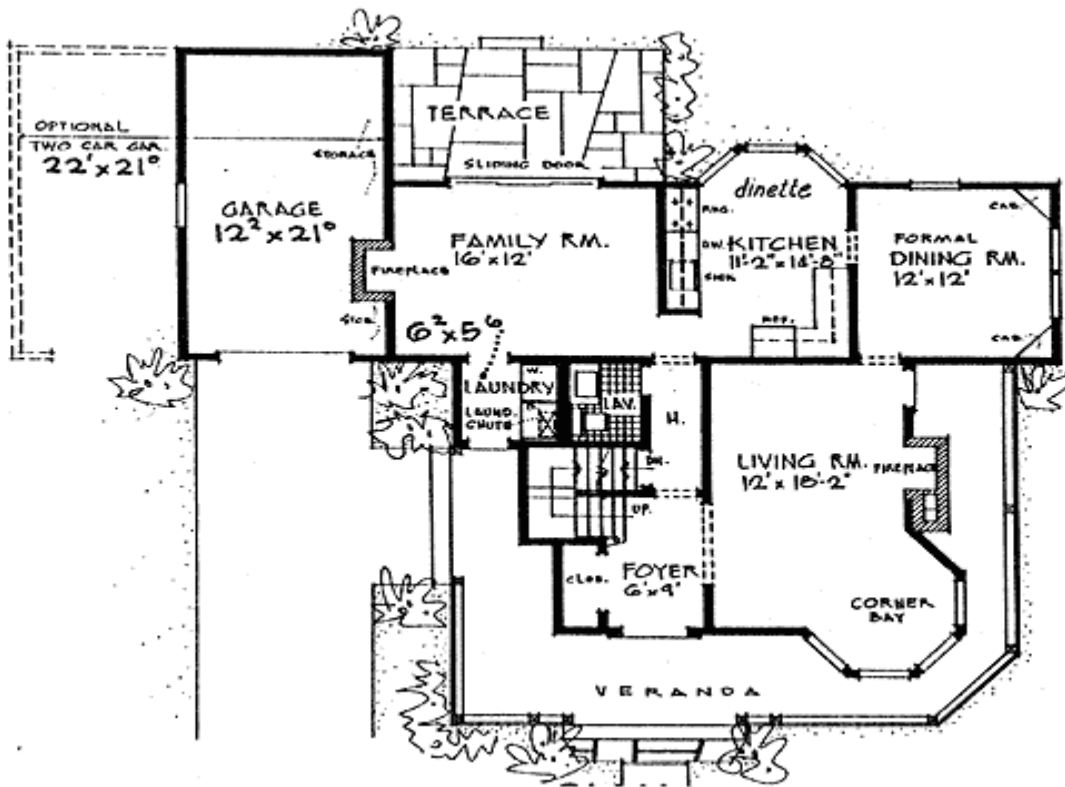
Eight Sets

\$590

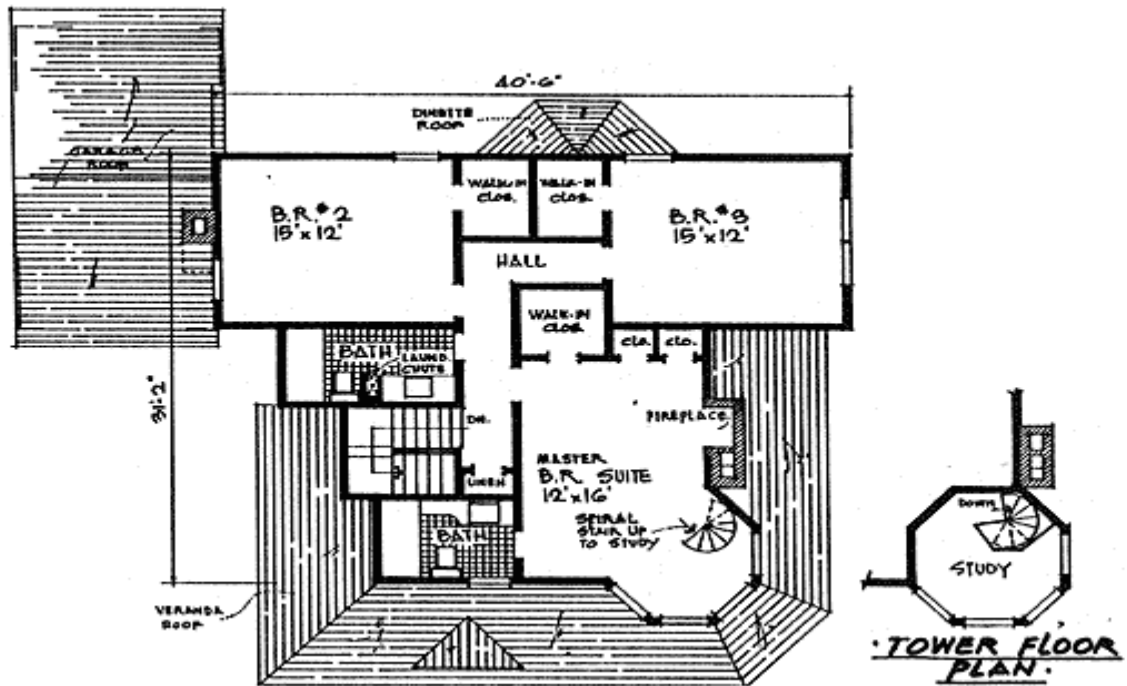
Reproducible

\$710

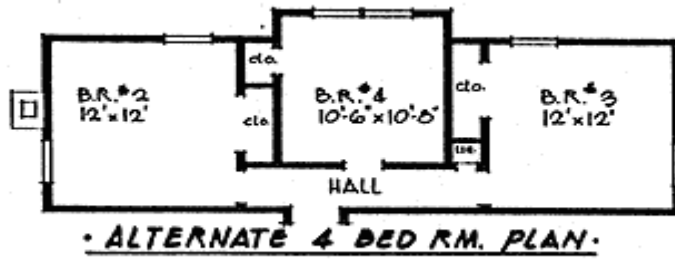
Main Level



2nd Level



Optional



Architectural Designs ...selling quality house plans for over 30 years.

Photo

