

Architectural Designs ...selling quality house plans for over 30 years.

Plan W10039TT: Stacked Porches



House plans are Copyright © 2009 by our architects and designers.

- This Charleston-inspired two story house plan enjoys a large open living and dining area, spacious kitchen and a private master bedroom suite with a full second floor porch, perfect for sipping your morning coffee.
- Only 25' wide, the house includes a total of three bedrooms, two full bathrooms, a laundry room, powder room and U-shaped kitchen with a breakfast bar that opens to the dining room.
- The double front porch elevation complements a simple gable roof and features a covered rear porch and exterior storage room.

Style: Southern

Total Living Area: 1465

Main Flr.: 750

2nd Flr.: 715

Total Square Feet: 1,465 sq. ft.

Bedrooms: 3

Full Bathrooms: 2

Half Bathrooms: 1

Width: 25'

Depth: 46'

Maximum Ridge Height: 29'10"

Exterior Walls: 2x4

Optional Exterior Walls: 2x6 \$100

Ceiling Height:

Main Floor: 9'

2nd Floor: 8'

Standard Foundations: Crawl

Alternate Foundations: Slab (\$100), Basement (\$250)

Special Features: Narrow Lot, PDF, Photo Gallery

One Set
\$610

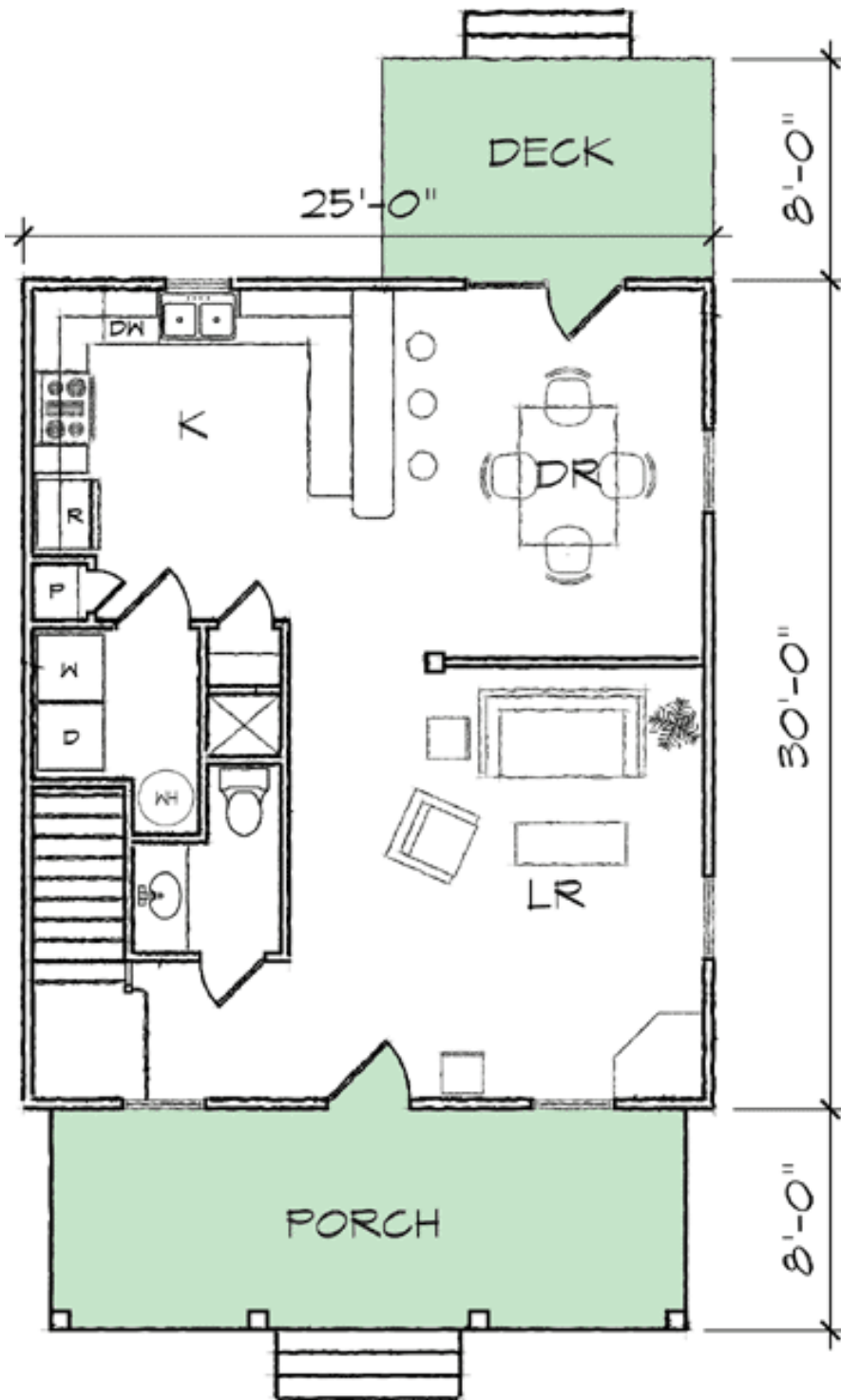
Five Sets
\$650

Eight Sets
\$680

Reproducible
\$600

PDF File
\$600

Main Level



2nd Level

