

Plan W9810SW: Charming Vacation Cottage



House plans are Copyright © 2009 by our architects and designers.

- With a deck, veranda and balcony adding outdoor living space, this charming vacation home feels larger than its 1,286 square feet.
- Enjoy the large great room, kitchen and dining area with a window seat and double doors leading to the deck.
- Room for guests on the first floor includes a bath and washer/dryer area.
- On the upper level, the homeowners have vaulted ceilings, a private balcony, a walk-in closet (this measures 11'8" by 4'8" with 10" deep shelves by 6' wide) and their own bath with room for a whirlpool tub.
- Related Plans: For a larger version of this house plan, see 9811SW.
- For an alternate layout, see house plan 9812SW.

Style: Canadian, Cottage, Vacation

Total Living Area: 1286

Main Flr.: 672

2nd Flr.: 614

Porch, Combined: 72 sq. ft.

Deck: 564 sq. ft.

Balcony/Veranda: 96 sq. ft.

Total Square Feet: 2,018 sq. ft.

Bedrooms: 2

Full Bathrooms: 2

Width: 36'

Depth: 42'6"

Maximum Ridge Height: 25'

Exterior Walls: 2x6

Ceiling Height:

Main Floor: 8'

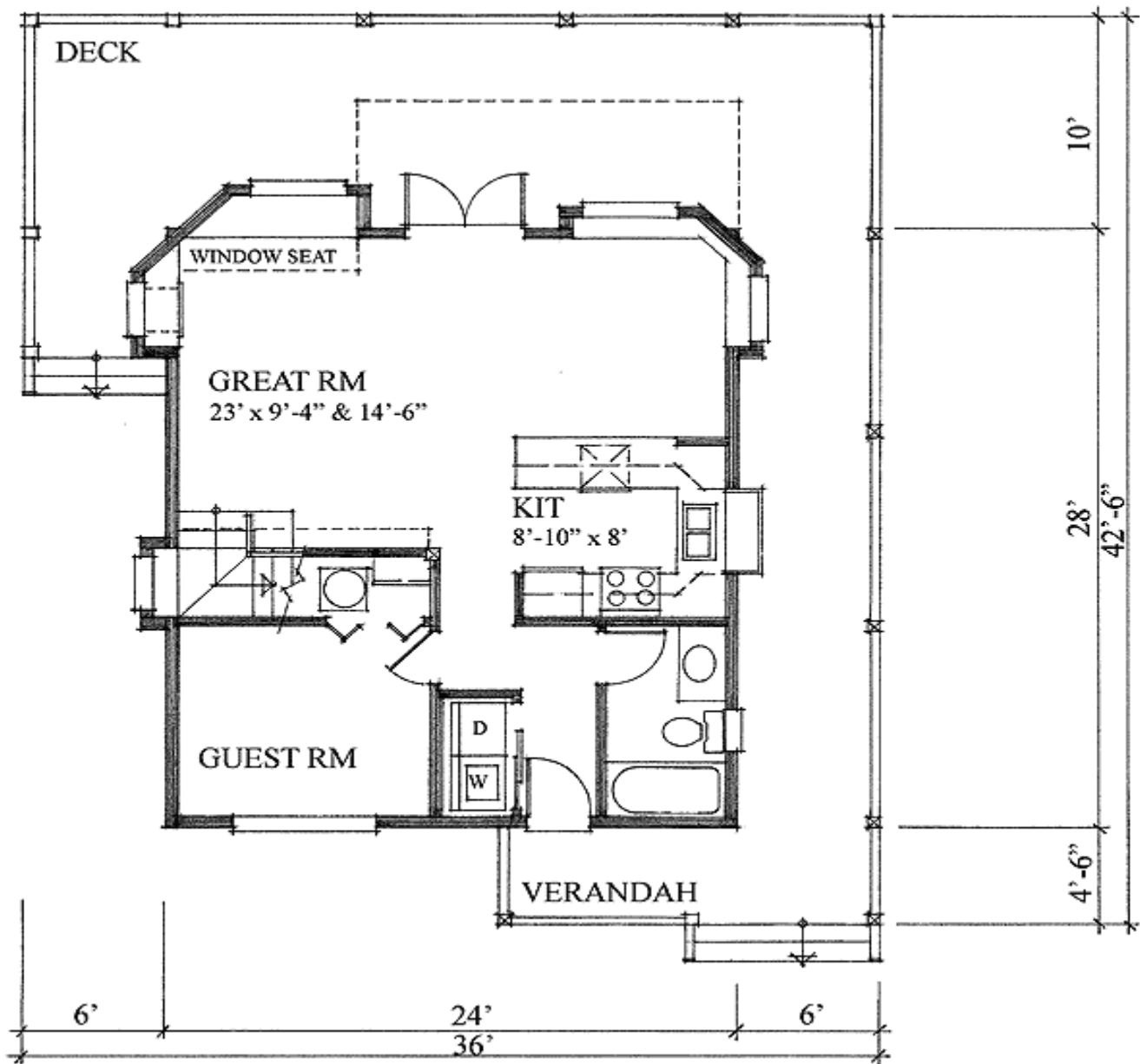
2nd Floor: 10'

Standard Foundations: Crawl

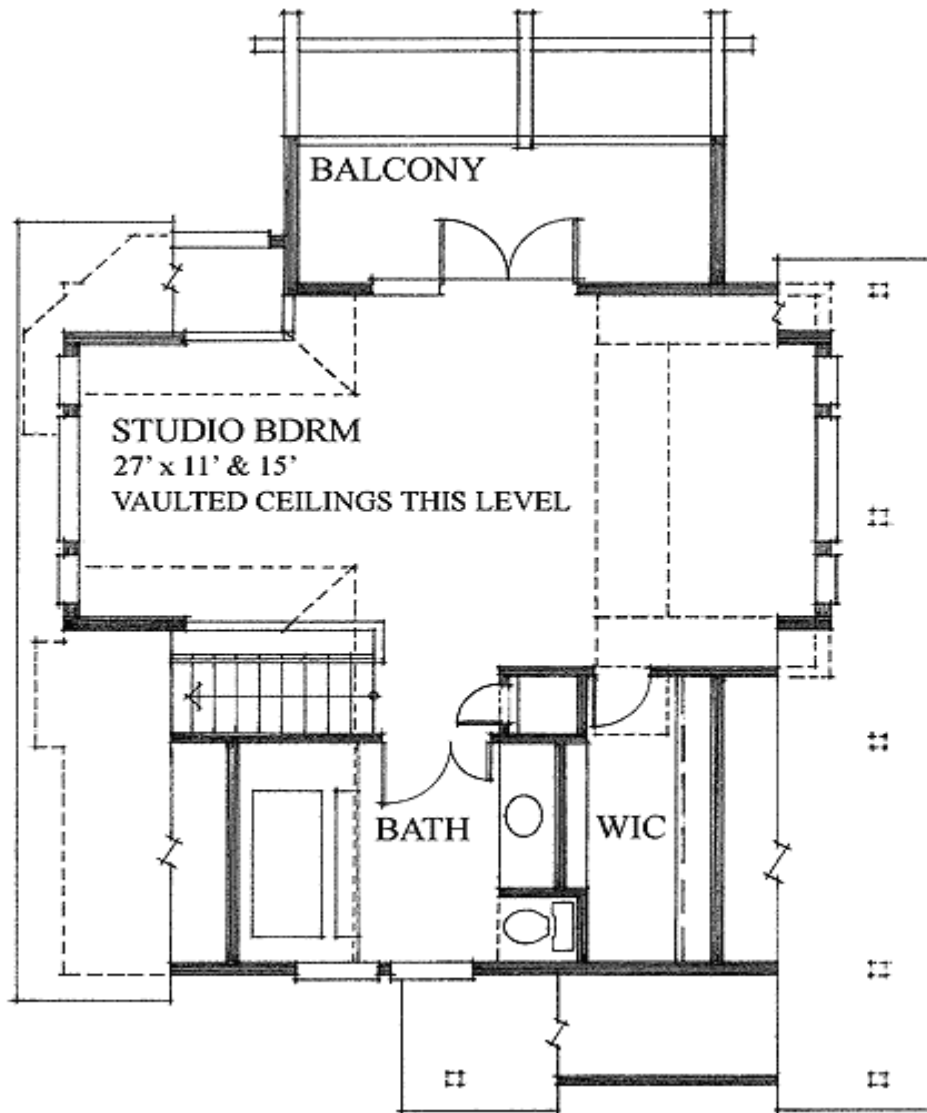
Special Features: Photo Gallery, Narrow Lot, PDF, Wrap Around Porch

One Set	Five Sets	Eight Sets	Reproducible	PDF File	CAD
\$395	\$460	\$505	\$605	\$605	\$805

Main Level



2nd Level



Elevation #2



Sides/Rear



REAR ELEVATION



LEFT ELEVATION



RIGHT ELEVATION

Kitchen

