

# Architectural Designs ...selling quality house plans for over 30 years.

Plan W1782DW: Beachside Beauty



House plans are Copyright © 2009 by our architects and designers.

- The welcoming front porch is perfect for catching those seaside breezes. For that matter, so is the rear porch which has multiple points of access.
- Walk through the front doors and see the beach through the covered lanai in the rear of this beach home plan.
- The entire house, excluding the foyer and bathrooms has vaulted ceilings. The cupola's windows bring light into the central living room.
- The bedrooms in front of the house are separated from the master suite in the rear for added privacy. The master suite opens to the lanai, as does the dining room.
- Alternate Designs: For an alternate layout, see house plan 1790DW.
- For a smaller version, see house plan 1798DW (1,622 sq. ft.).
- Need a garage? See house plan 1794DW (2-car attached), 1795DW (3-car attached) and 1801DW (2-car drive-under).

Style: Beach, Cottage, Florida, Southern, Vacation

Total Living Area: 1867

Main Flr.: 1867

Porch, Combined: 349 sq. ft.

Lanai: 261 sq. ft.

Total Square Feet: 2,216 sq. ft.

Bedrooms: 3, 2

Full Bathrooms: 2

Width: 46'8"

Depth: 53'8"

Maximum Ridge Height: 22'8"

Exterior Walls: 2x6

Ceiling Height:

Main Floor: 8'

Other: Vaulted First Floor with 8' Bathrooms

Standard Foundations: Joist, Piling, Crawl

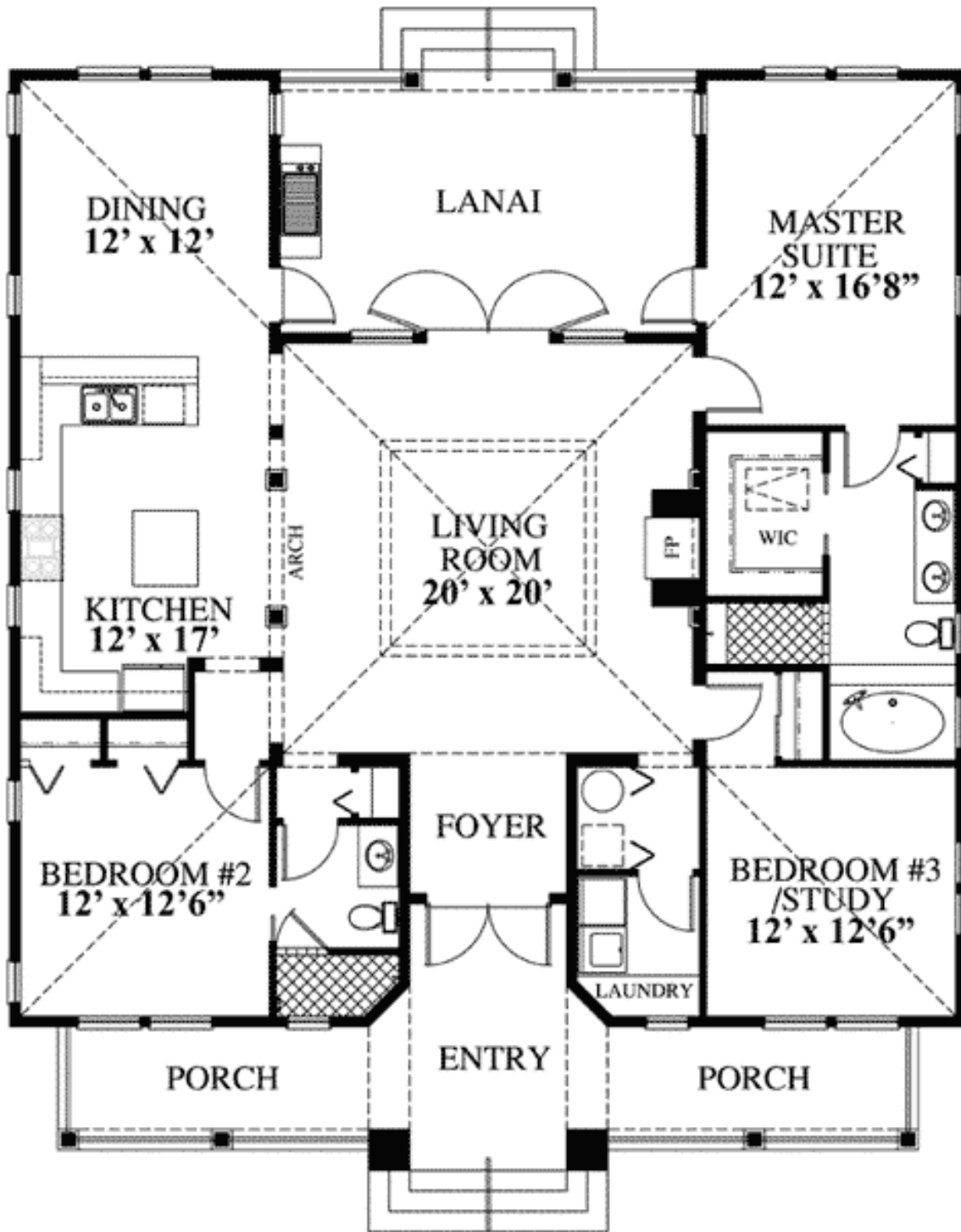
Special Features: Narrow Lot, 1st Floor Master Suite, CAD Available, Den-Office-Library-Study

Five Sets  
\$995

Reproducible  
\$1,250

CAD  
\$1,495

## Main Level



Rear View



Rear elevation