

## Plan W2287SL: 3-Car Carriage House Plan



House plans are Copyright © 2009 by our architects and designers.

- When built with a permanent residence, this carriage house plan is perfect for the maid's quarters or for use as a guest suite.
- The 3-car garage has direct access to the interior stairs leading to the upper level apartment.
- A U-shaped kitchen offers efficiency and serves the breakfast room with ease.
- The spacious living area offers flexibility. Both bedrooms provide ample closet space.
- Related Plan: For an alternate version, see 2252SL.

Style: Carriage, Garage

Total Living Area: 974

2nd Flr.: 974

Total Square Feet: 1,948 sq. ft.

Attached Garage: 3 Car, 974 sq. ft.

Bedrooms: 2

Full Bathrooms: 1

Width: 40'

Depth: 24'

Maximum Ridge Height: 24'

Exterior Walls: 2x4

Optional Exterior Walls: 2x6 \$75

Ceiling Height:

Main Floor: 8'

2nd Floor: 8'

Standard Foundations: Slab

Special Features: CAD Available, Narrow Lot, PDF

One Set  
\$250

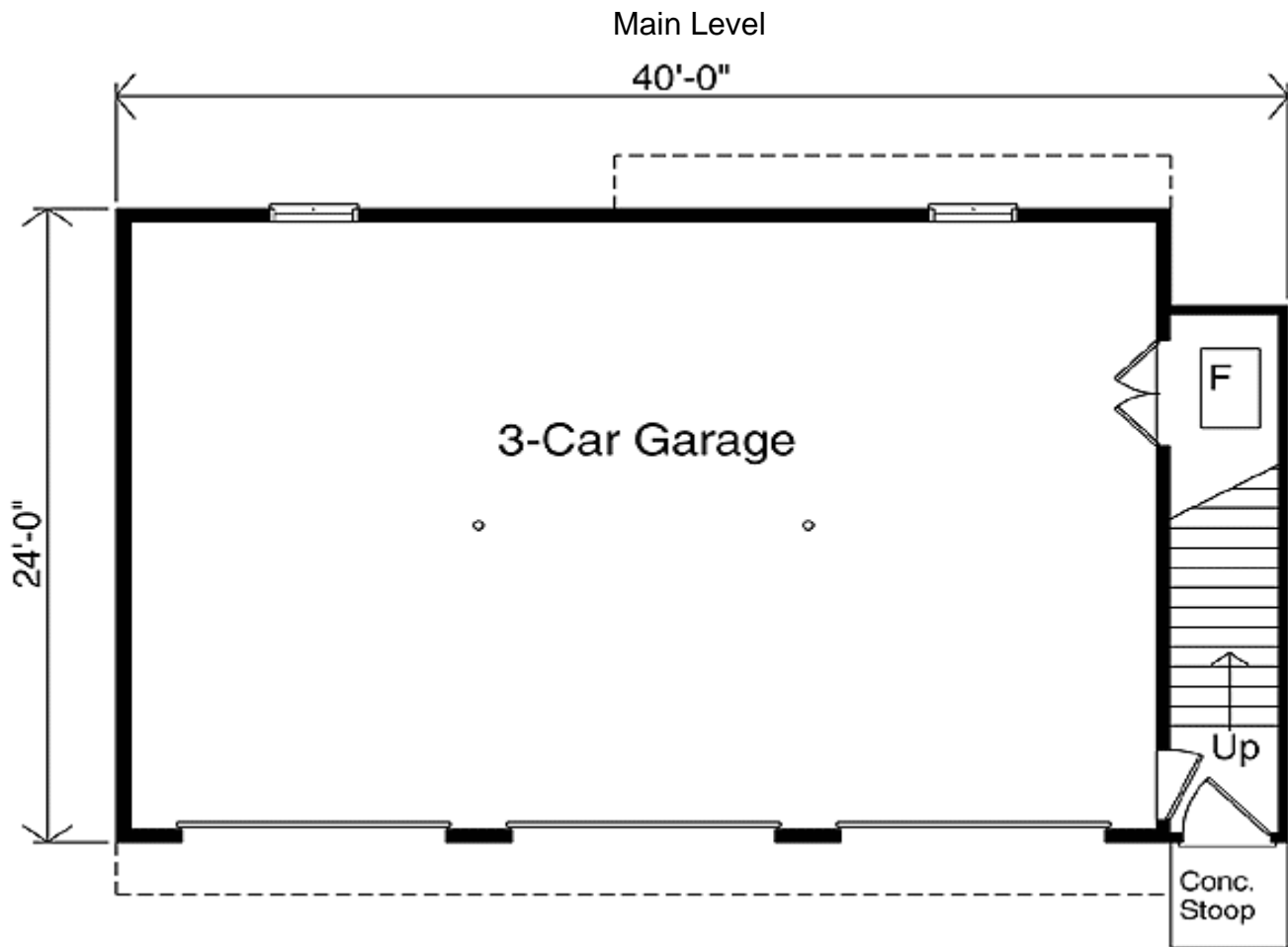
Five Sets  
\$340

Eight Sets  
\$385

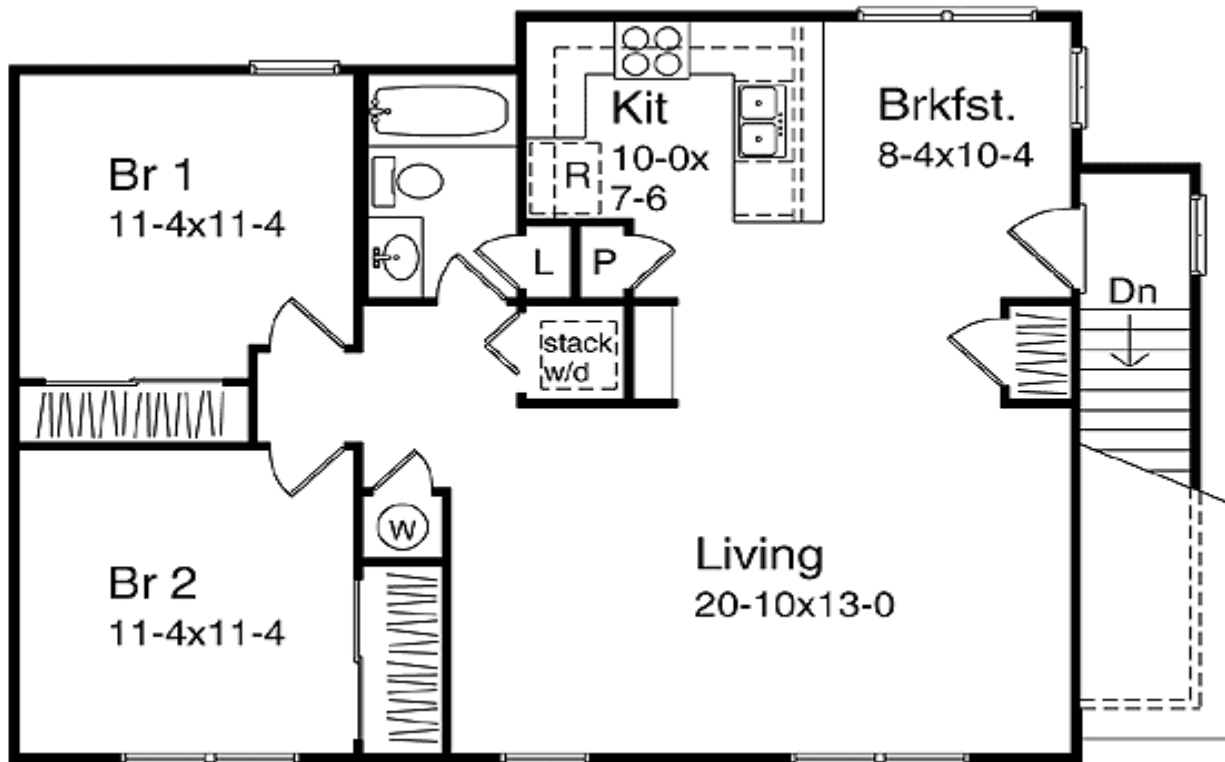
Reproducible  
\$450

PDF File  
\$450

CAD  
\$550



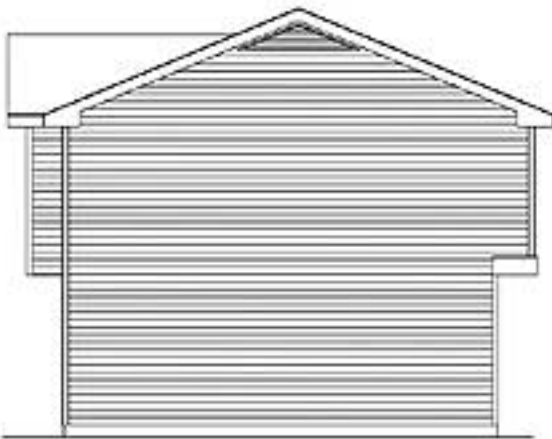
2nd Level



## Sides/Rear



Rear elevation



Left elevation



Right elevation