

Architectural Designs ...selling quality house plans for over 30 years.

Plan W12034JL: Fit for a King



House plans are Copyright © 2009 by our architects and designers.

- Enjoy the good life in your very own castle with a most impressive exterior. Every element of the house from the elegant ceiling treatments to the built-ins to the elaborate curved staircase will delight the eye.
- A large circular dining room with built-in niches will make a wonderful setting for those formal and family holiday dinners.
- Light from a wall of windows pours into the two-story formal living room with access to the deck.
- Guests will enjoy their own first floor suite near the oversized two-story library with spiral staircase to the upper level.
- Gourmet chefs will enjoy the huge kitchen with two islands, perfect for those catered events. The keeping room with coffered ceiling and fireplace lies close by.
- On the second level, three extra large bedrooms each have their own bath and walk-in closet while the master suite is a world unto itself. Coffered ceilings, a romantic fireplace and a round sitting room all serve to pamper the owners. Designed to rival any spa, the master bath is luxurious and large. His and her walk-in closets allow plenty of rooms for clothes.
- Bedroom 4 enjoys its own sitting room as well.
- See these related house plans: 12010JL, 12069JL, 12042JL and 12045JL.

Style: European, Luxury

Total Living Area: 6626

Main Flr.: 3358

2nd Flr.: 3268

Total Square Feet: 7,386 sq. ft.

Attached Garage: 2 Car, 760 sq. ft.

Bedrooms: 5

Full Bathrooms: 5+

Width: 70'

Depth: 75'

Exterior Walls: 2x4

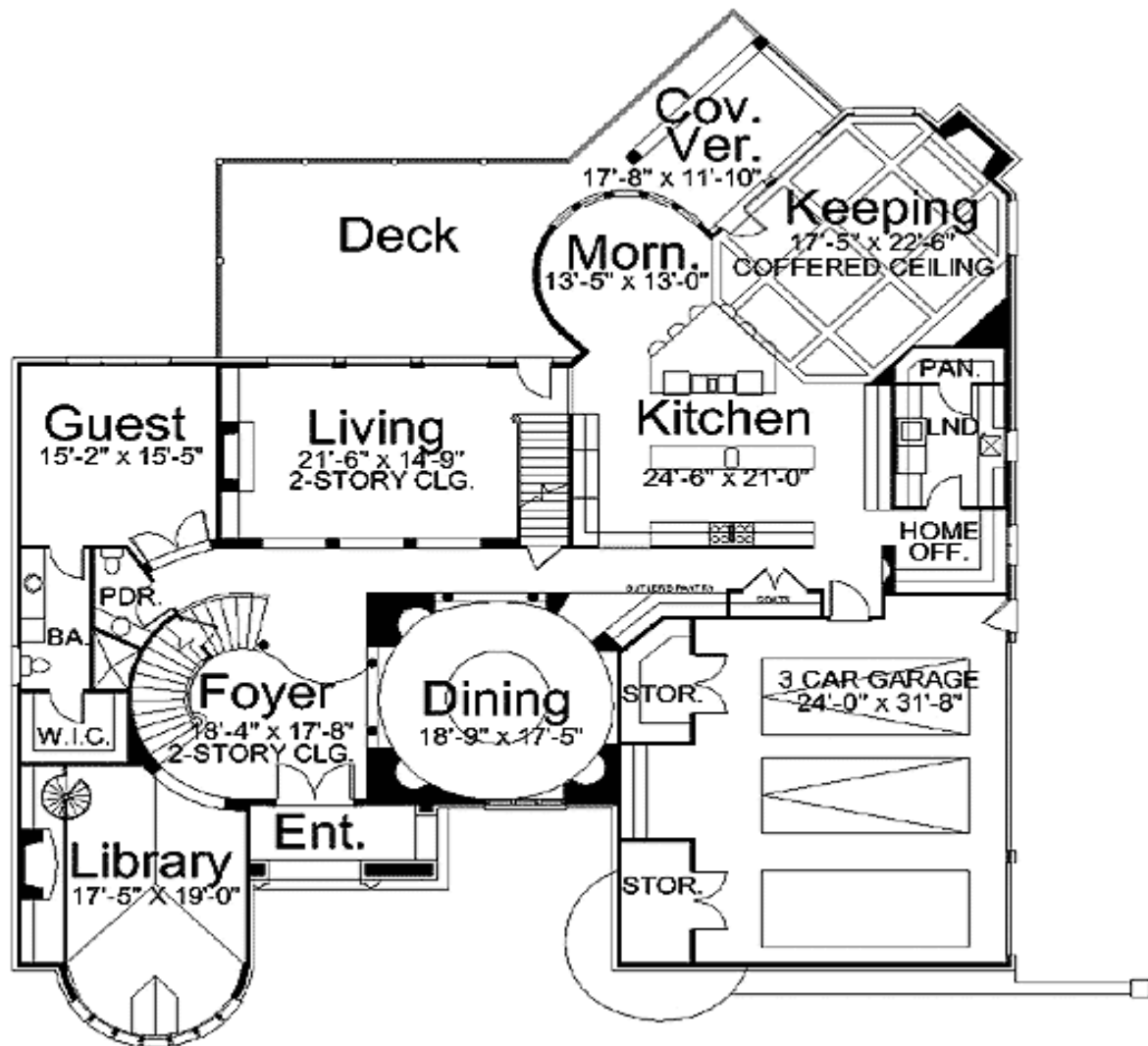
Ceiling Height:

Standard Foundations: Walkout

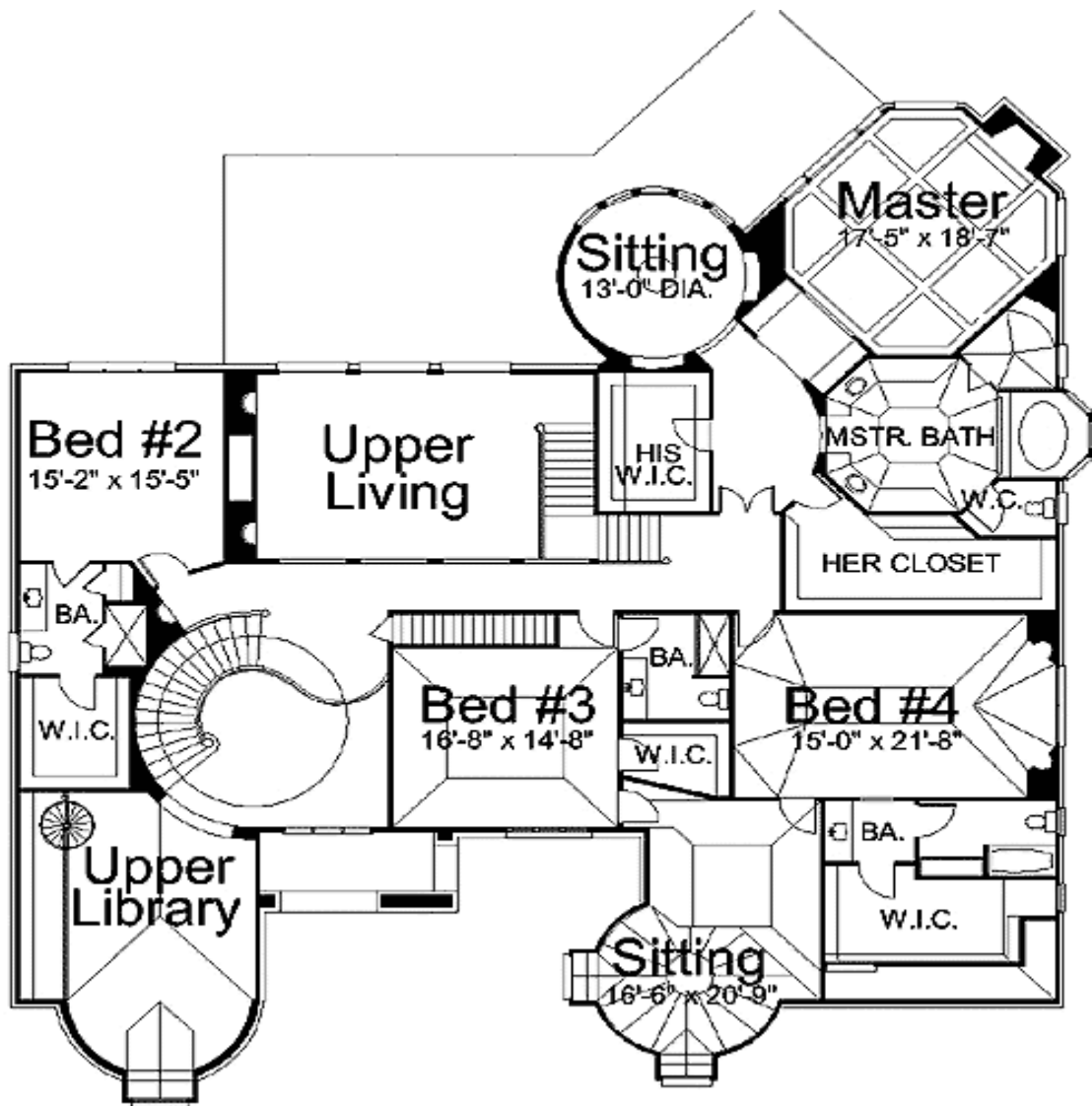
Special Features: Sloping Lot, PDF, CAD Available

One Set	Five Sets	Reproducible	PDF File	CAD
\$1,785	\$2,616	\$2,860	\$2,860	\$4,290

Main Level



2nd Level



Rear View

