

Architectural Designs ...selling quality house plans for over 30 years.

Plan W6387HD: Seaside Fantasy



House plans are Copyright © 2009 by our architects and designers.

- Perfect for low-lying beachfront areas or sited high and dry to capture mountain views, this design has ample interior space despite its narrow footprint.
- The lack of hallways on the first floor, and only a small hall on the second floor, maximizes the square footage.
- The country kitchen expands into the large dining area and family gathering space.
- Optional doors from the master bedroom to the front deck can facilitate sunset viewing, while the rear deck is ideal entertaining space. Note the walk-in closet in the master bedroom and the bath shared with bedroom two.
- Upstairs, bedroom four has study space in its dormer, which opens to a private "widow's walk."
- The ground level can easily be converted into garage and storage spaces.
- Foundation: pier.

Style: Beach, Vacation

Total Living Area: 1543

Main Flr.: 1073

2nd Flr.: 470

Front Porch: 156 sq. ft.

Deck: 48 sq. ft.

Covered Patio: 309 sq. ft.

Total Square Feet: 2,056 sq. ft.

Bedrooms: 4

Full Bathrooms: 2

Width: 30'

Depth: 71'6"

Maximum Ridge Height: 30'

Exterior Walls: 2x6

Ceiling Height:

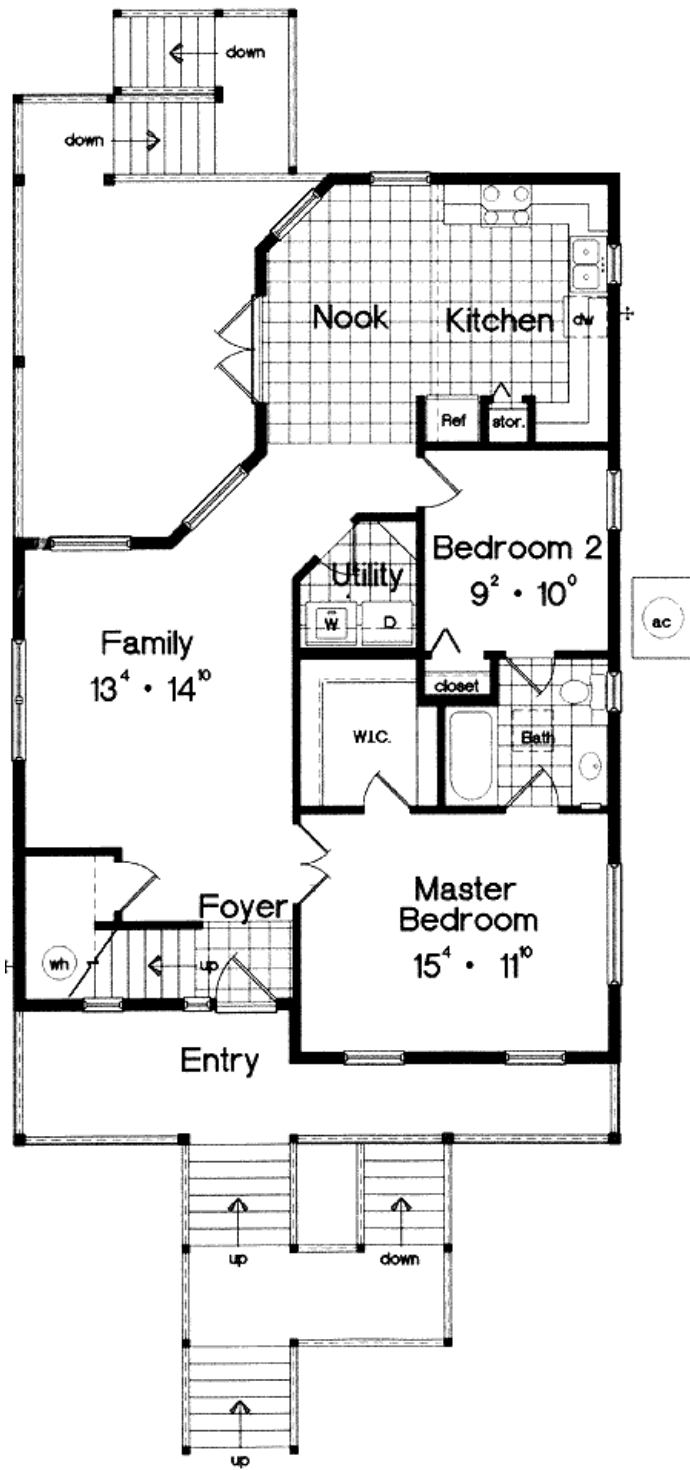
Standard Foundations: Pier

Alternate Foundations: Basement (\$675), Crawl (\$675)

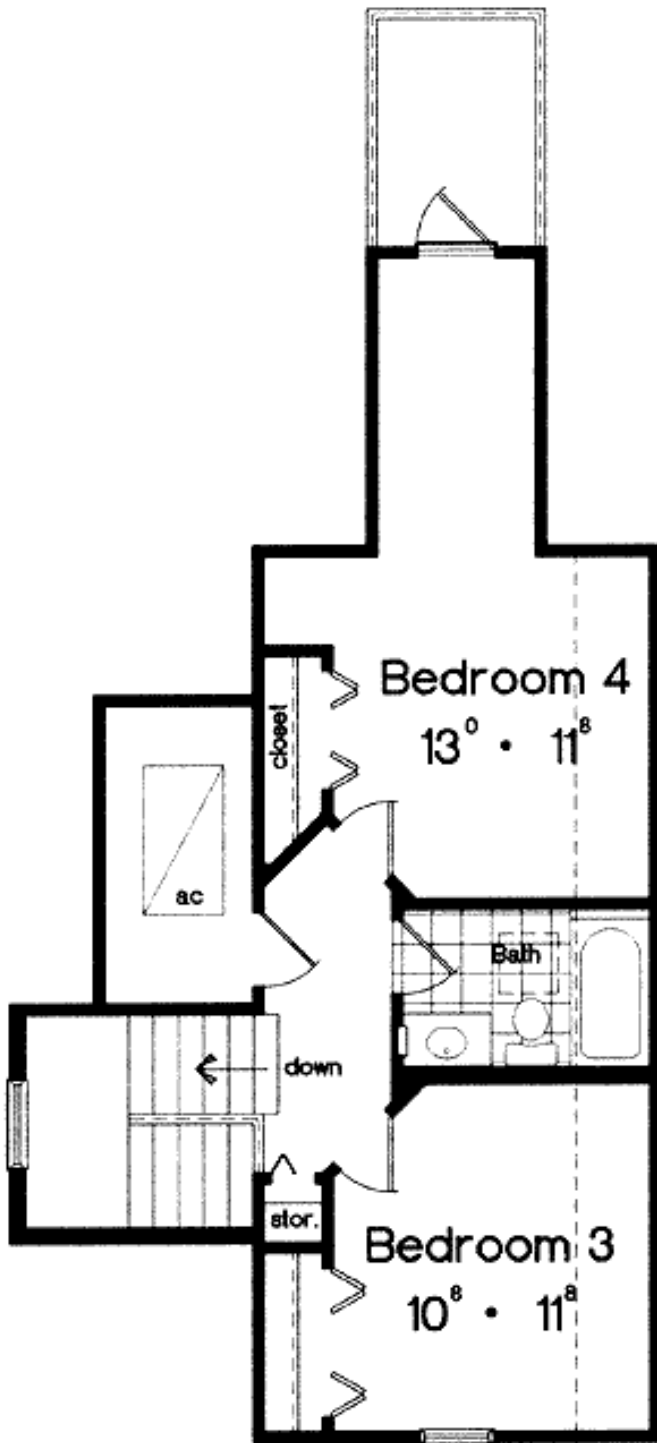
Special Features: PDF, 1st Floor Master Suite, Narrow Lot, CAD Available

One Set	Five Sets	Eight Sets	Reproducible	PDF File	CAD
\$485	\$545	\$590	\$710	\$710	\$1,420

Main Level



2nd Level



Architectural Designs ...selling quality house plans for over 30 years.

Interior

