

# Architectural Designs ...selling quality house plans for over 30 years.

Plan W57113HA: Four-Car Apartment Garage With Shop



House plans are Copyright © 2009 by our architects and designers.

- Attractive single-story look with an elegant gabled porch.
- Shop room includes built-in cabinets, toilet room, accesses large front porch and both single-car and two-car garages.
- The second floor apartment features a living room with rear balcony, efficient kitchen with snack bar and spacious bedroom with hall bath.

Style: Carriage, Garage

Total Living Area: 831

Main Flr.: 255

2nd Flr.: 576

Entry: 42 sq. ft.

Total Square Feet: 1,911 sq. ft.

Attached Garage: 4 Car, 1,038 sq. ft.

Bedrooms: 1

Full Bathrooms: 1

Half Bathrooms: 1

Width: 50'

Depth: 34'

Maximum Ridge Height: 26'

Exterior Walls: 2x4

Ceiling Height:

Main Floor: 8'

2nd Floor: 9'

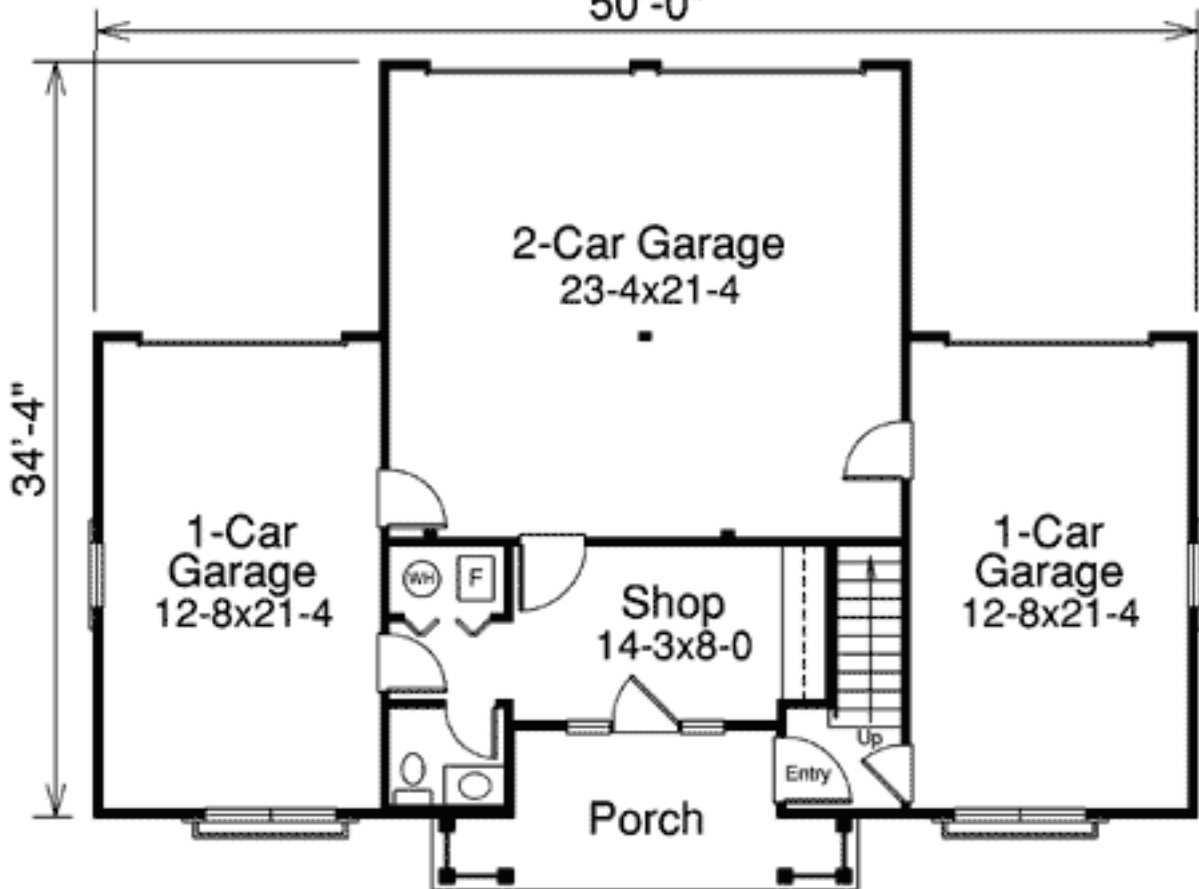
Standard Foundations: Slab

Special Features: CAD Available, PDF, Narrow Lot

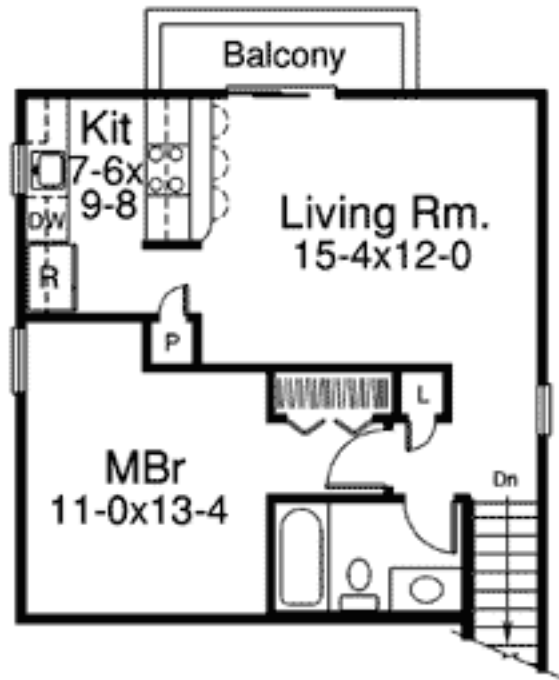
One Set	Five Sets	Eight Sets	Reproducible	PDF File	CAD
\$310	\$410	\$510	\$595	\$595	\$995

Main Level

50'-0"



## 2nd Level



## Sides/Rear

