

Architectural Designs ...selling quality house plans for over 30 years.

Plan W8236JH: Timeless Tradition



House plans are Copyright © 2009 by our architects and designers.

- A beautiful "Traditional" exterior and a style that are timeless make this home a sound investment. The heritage still exists of sitting on the front porch.
- Entering the living area, you will be impressed with the beamed ceiling and the massive fireplace at the end of this 18' room.
- The U-shaped kitchen, with lots of counter top and storage space, opens into the dining area, where a double-width window allows in natural light.
- The master suite features a full bath, a walk-in closet and a double-width window. Two additional bedrooms share a nearby bath.
- Foundation options: slab or crawl space. Specify when ordering.

Style: Ranch, Southern, Traditional

Total Living Area: 1157

Main Flr.: 1157

Front Porch: 192 sq. ft.

Storage: 63 sq. ft.

Total Square Feet: 1,812 sq. ft.

Carport Garage: 2 Car, 400 sq. ft.

Bedrooms: 3

Full Bathrooms: 2

Width: 44'10"

Depth: 57'

Maximum Ridge Height: 19'2"

Exterior Walls: 2x4

Ceiling Height:

 Main Floor: 8'

Standard Foundations: Slab, Crawl

Special Features: CAD Available, Carport, 1st Floor Master Suite, Narrow Lot, PDF, Carport

One Set
\$395

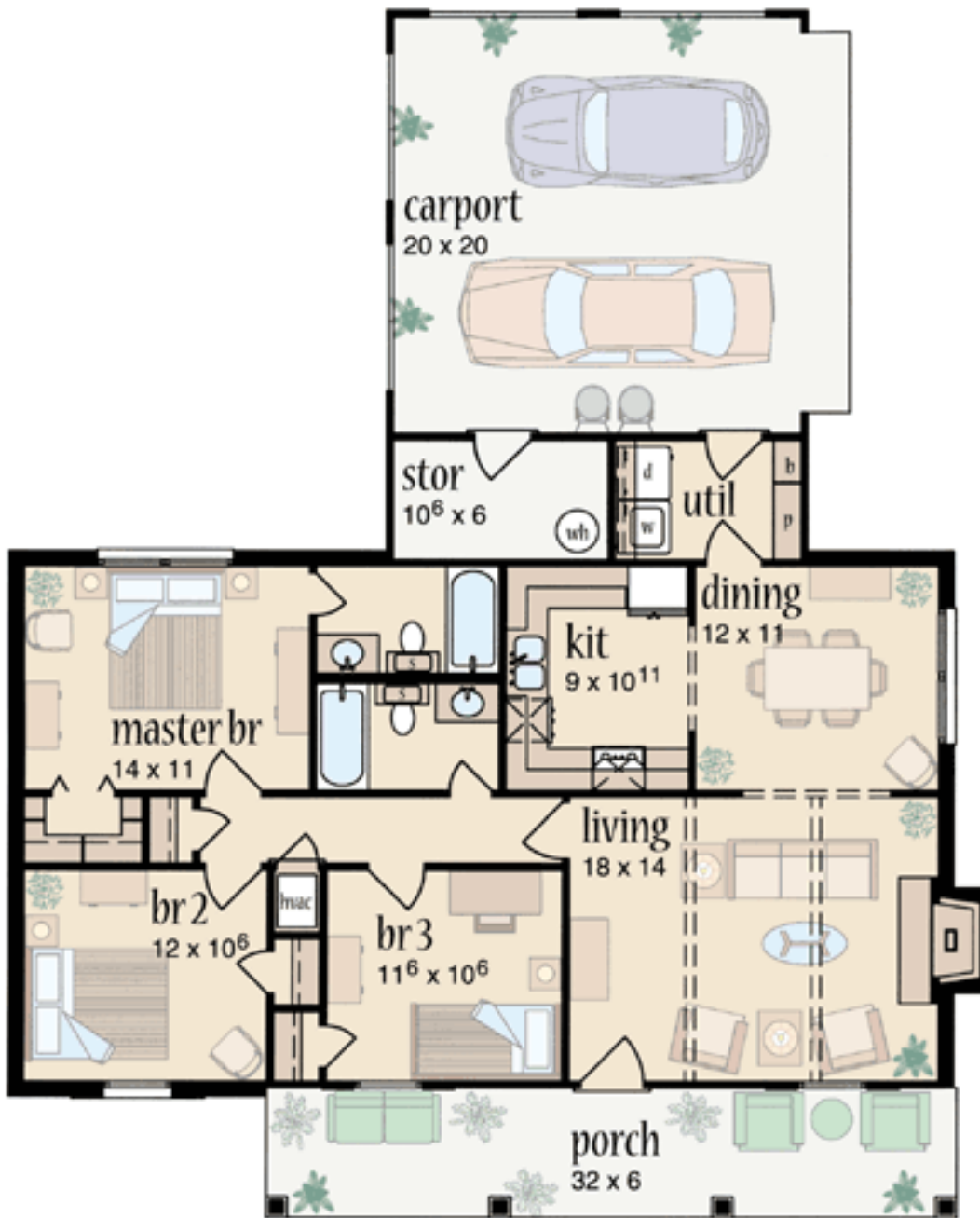
Five Sets
\$435

Eight Sets
\$505

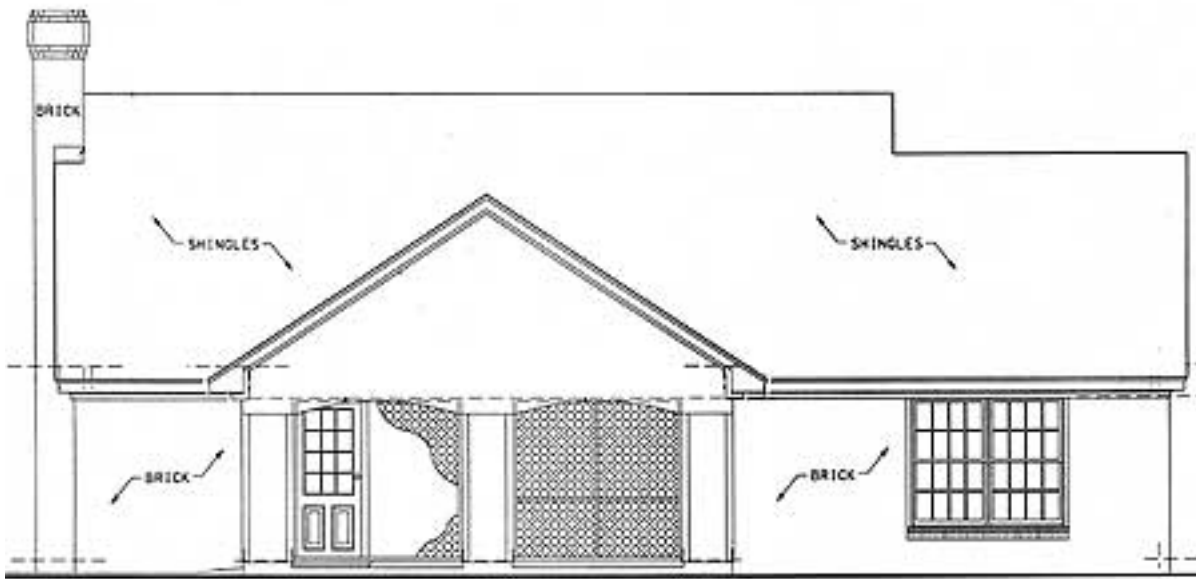
Reproducible
\$615

PDF File
\$870

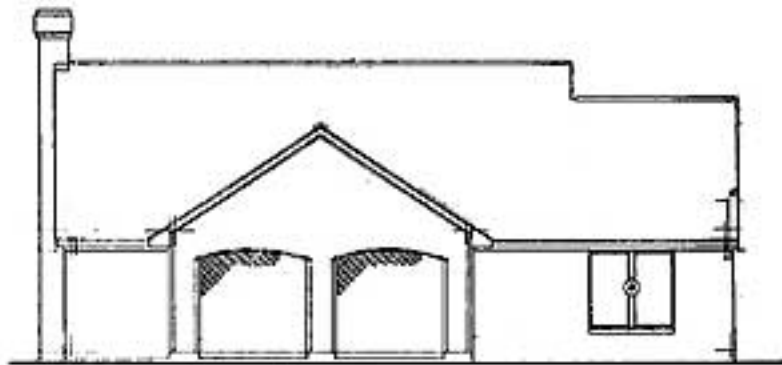
Main Level



Rear View



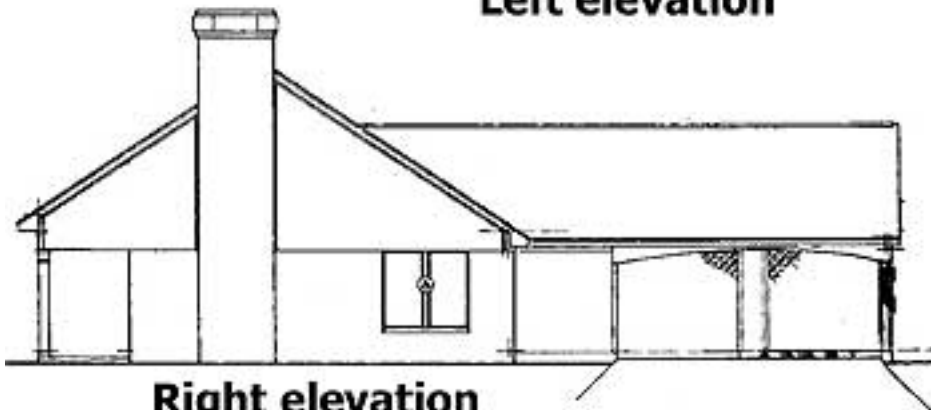
Sides/Rear



Rear elevation



Left elevation



Right elevation