

Architectural Designs ...selling quality house plans for over 30 years.

Plan W43002PF: Charming Gothic Revival Cottage



House plans are Copyright © 2009 by our architects and designers.

- The Gothic revival style of this cottage house plan demands attention from the street, calling you to inspect its stunning interior.
- The highly detailed porch takes you to the stair hall entry and provides a view directly to the kitchen/nook and outside deck.
- The two story living room with soaring windows and a fireplace leads to a cozy porch on the side.
- The first floor bedroom has a walk-in closet and is handy to a bathroom that doubles as a powder room.
- The second floor has the master bedroom with an eleven-foot eight-inch ceiling and the adjoining large master bath includes a convenient stacked washer and dryer.
- Bonus: Need a detached garage to match this plan? See garage plan 43038PF.

Style: Cottage, European, French Country

Total Living Area: 1204

Main Flr.: 767

2nd Flr.: 437

Front Porch: 123 sq. ft.

Total Square Feet: 1,327 sq. ft.

Bedrooms: 2

Full Bathrooms: 2

Width: 36'10"

Depth: 31'4"

Maximum Ridge Height: 32'9"

Exterior Walls: 2x6

Ceiling Height:

Main Floor: 8'

2nd Floor: 11'6"

Standard Foundations: Basement

Special Features: Narrow Lot, PDF

One Set
\$395

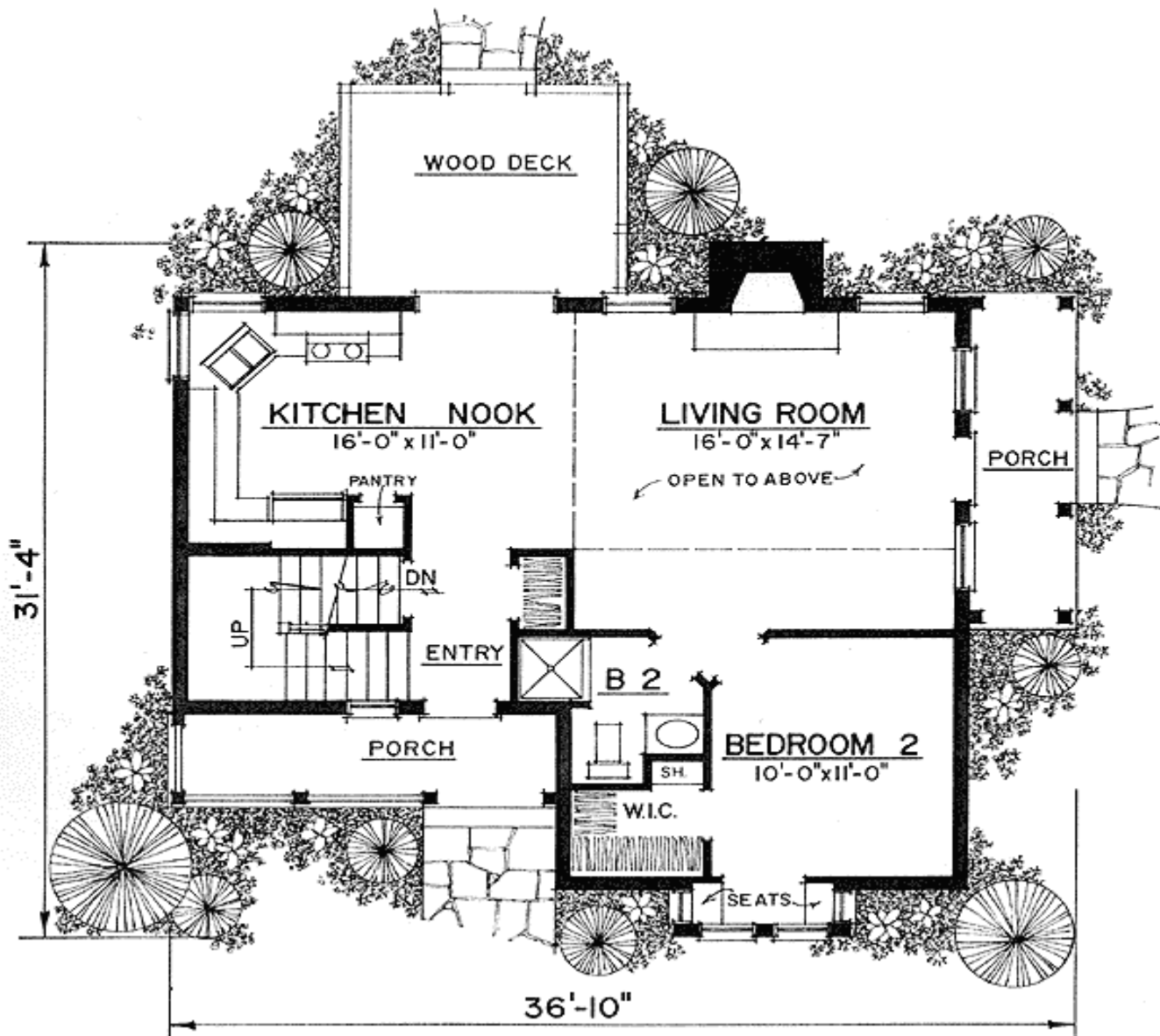
Five Sets
\$460

Eight Sets
\$505

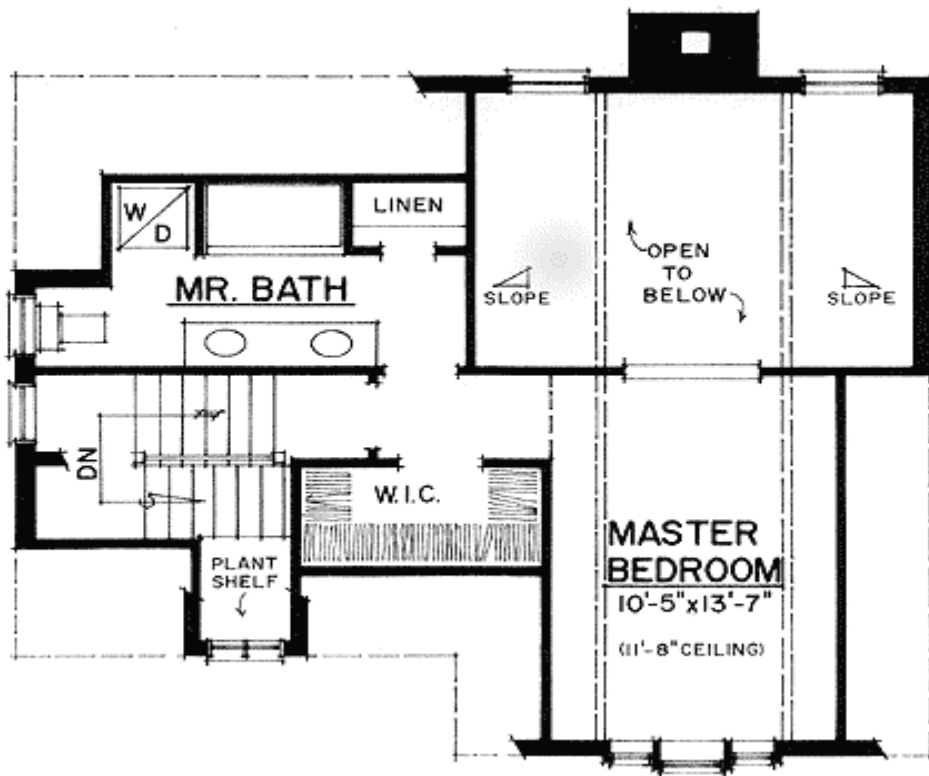
Reproducible
\$605

PDF File
\$605

Main Level



2nd Level



Rear View

